

This is a common map legend for the surficial geology of northern Alberta. Coloured legend blocks indicate map units that appear on this map. Not all map symbols shown in the legend necessarily appear on this map.

UNIT	UNIT NAME	DESCRIPTION AND GENESIS
<b>QUATERNARY</b>		
<b>HOLOCENE</b>		
A	<b>ANTHROPOGENIC MATERIALS:</b> Artificially made ground or geological materials that have been disturbed by human activity, such that their physical properties (e.g. structure, cohesion, compaction) have been drastically altered.	
O	<b>ORGANIC DEPOSITS:</b> Undifferentiated peat (woody to fibrous much) occurring in wetlands; commonly underlain by fine-grained, poorly drained glaciolacustrine deposits; includes marshes, swamps, bogs and fens.	
OB	<b>Bog peat:</b> Occurs in a peatland with a fluctuating water table and commonly a raised surface; peatland surface is dominated by sphagnum mosses, heath shrubs and short, stunted trees.	
OF	<b>Fen peat:</b> Occurs in peatland which receives water from slowly flowing streams and groundwater, with the water table lying at the land surface; peatland surface is dominated by sedges, with grasses and reeds near local pools, and is sparsely treed.	
C	<b>COLLUVIAL DEPOSITS:</b> Materials that have reached their present position as a result of direct, gravity-induced movement; commonly occurs as slope and slump deposits confined to valley slopes and floors; includes pre-existing bedrock, till, glaciolacustrine, glaciofluvial and eolian sediments, generally poorly sorted.	
F	<b>FLUVIAL DEPOSITS:</b> Sediments transported and deposited by streams and rivers; synonymous with alluvium. Includes well-sorted stratified sand, gravel, silt, clay and organic sediments occurring in channel and overbank deposits (e.g., postglacial floodplains, terraces, fans and deltas).	
L	<b>LACUSTRINE DEPOSITS:</b> Sediments deposited in and adjacent to recent and modern lakes; includes offshore sand, silt and clay, minor organic deposits, may also include minor littoral (nearshore) beaches and bars composed of sand, silt and minor gravel.	
E	<b>EOLIAN DEPOSITS:</b> Wind deposited sediments; comprise well-sorted, medium- to fine-grained sand and minor silt, generally massive to locally cross-bedded or ripple-laminated; includes both active and vegetated dunes and sand sheets.	
<b>PLEISTOCENE</b>		
LG	<b>GLACIOLACUSTRINE DEPOSITS:</b> Primarily fine-grained, detrital sediments deposited in or along the margins of glacial lakes, including sediments released by the melting of floating ice. Includes laminated (rhythmically bedded) to massive fine sand, silt and clay, and may contain ice-rafted debris.	
LGL	<b>Littoral and nearshore sediments:</b> Massive to stratified, well-sorted silty sand, pebbly sand and minor gravel; occurs in beaches, bars, spits and deltaic forests deposited during regression and lowering of glacial lakes.	
LGL	<b>Ice-contact sediments:</b> Sediments deposited in ice-walled lake plains along the margins of stagnant glacial ice. Characterized by low- to high-relief hummocky topography, including flat-topped hills. Typically comprise glaciolacustrine sediment, including laminated to massive fine sand, silt and clay in the central part of these features, and littoral sediments around their margins. Locally contain distinct resulting from the collapse, melt-out or slumping of supraglacial debris from the surrounding ice walls.	
FG	<b>GLACIOFLUVIAL DEPOSITS:</b> Sediments deposited by glacial meltwater streams as subaerial or subaqueous outwash. Includes sand and gravel, often stratified, minor silt, and may show evidence of ice melting (slumped structures). Features include meltwater channels, kettle holes, terraces and minor ice-contact sediments.	
FGI	<b>Ice-contact sediments:</b> Sediments deposited by meltwater streams flowing either in direct contact with the ice margin (kame terraces) or within and/or under glacial ice (eskers, crevasse ridges). Includes massive to stratified, poor to moderately sorted, coarse-grained sediments (predominantly pebble gravel and coarse-grained sand, locally till) and may show evidence of ice melting (slumped structures).	
M	<b>MORAINES:</b> Diamictic (ill) deposited directly by glacial ice and consisting of a mixture of clay, silt, sand and minor pebbles, cobbles and boulders. Locally, this unit may contain blocks of bedrock, pre-existing stratified sediment and till, or lenses of glaciolacustrine and/or glaciofluvial sediment.	
MS	<b>Stagnant ice moraine:</b> Material resulting from the collapse and slumping of englacial and supraglacial sediment in response to the melting of buried stagnant ice at the ice margin; sediment is mainly diamictic, but locally includes stratified sediments of glaciolacustrine or glaciofluvial origin. Characterized by low to high-relief hummocky topography.	
MT	<b>Ice-thrust moraine:</b> Terrain formed from the glaciostatic displacement of materials as blocks or rafts in a more or less tilted state. Materials may include syn-genetic till, as well as masses of pre-existing sediments and/or bedrock. Characterized by high to moderate relief and features include hill-hole pairs and glaciostatic moraines.	
MF	<b>Fluted moraine:</b> Glacially streamlined terrain; varies from alternating furrows and ridges to nearly equidimensional smoothed hills; all landforms parallel the local ice flow direction; includes flutes, drums and drummincks.	
FP	<b>PREGLACIAL FLUVIAL DEPOSITS:</b> Sediments transported and deposited by streams and rivers prior to glaciation. This includes sand and gravel deposited in paleovalleys (i.e., preglacial floodplains, terraces, fans and deltas).	
<b>PRE-QUATERNARY</b>		
RT	<b>UNCONSOLIDATED FLUVIAL GRAVELS:</b> Predominantly well-sorted, quartzite and chert gravel and cobbles; Cordilleran source, Paleogene to Neogene.	
R	<b>BEDROCK</b>	

SYMBOL LEGEND	BASEMAP LEGEND
Landside and active layer failure scar (small)	Road-paved-primary
Landside and active layer failure scar (large)	Road-gravel-primary
Beach or strandline	Road-unimproved
Escarpment	Trail-truck
Meltwater channel (minor)	River
Meltwater channel (major)	Lake
Crevasse filling	UTM, Zone 11 Grid
Drumminoid or streamlined landform	Contour, intervals 50 metres
Buried drumminoid or streamlined landform	
Minor moraine ridge	
Major moraine ridge	
Ice thrust ridge	

**UNIT NOTATION**  
 Example: sandy GLACIOLACUSTRINE plain

**Textural Modifier**  
 Textural characteristics may be applied to the terrain classification as a prefix based on field observations or by inference from distinctive genesis and/or morphology. When two modifiers are given, the second letter is the dominant texture, with the first letter indicating the secondary texture. i.e., sc for sandy clay.

**Genetic & Geomorphological Modifiers**

**c** crevasse fill ice-contact ridges formed by the slumping of sediment into crevasses on the ice surface or the squeezing of till into fractures at the ice base

**d** doughnut rings and ridges circular hummocks with a central depression, plateau mounds and brain-like pattern ridges, low to moderate relief

**e** eroded planar surface eroded by glacial meltwater, often capped by a boulder lag and/or thin deposit of sand and gravel

**g** gullied slopes dissected by modern ravines created by intermittent runoff

**h** hummock assemblage of approximately equidimensional hills and hollows; moderate to high relief (commonly greater than 2 m)

**k** collapse depression, includes kettle holes, pitted morphology, thermokarst depressions, karst sinkholes

**m** meander sinuous curves, loops and oxbows produced as meltwater and modern streams shift their channels over time

**p** plain deposit greater than 2 m thick; commonly masks geomorphic pattern of underlying deposits; flat to gently rolling topography (commonly less than 2 m relief)

**r** ridged one or more parallel or subparallel, convex, linear morphological elements with a length-to-width ratio greater than 2; low to high relief

**s** slumped landside blocks, slope failure debris

**t** terrace a bench of either erosional or depositional origin that flanks the sides of floodplains, valleys and lakes, includes fluvial and glaciofluvial terraces, shoreline terraces and anthropogenic terraces

**u** undulating low-relief rolling terrain; swell and swale topography

**v** veneer thin mantle of unconsolidated sediment that is too thin to mask the minor irregularities of the surface of the underlying material; it ranges in thickness from 10 cm to 1 metre and may be discontinuous

**w** washboard low-relief transverse moraine ridges, usually formed from basal ice shearing

**x** frost creep indicates slow mass movement, frost creep and solifluction related to permafrost, may occur on slopes as gentle as three degrees

**y** dissected channelled or dissected by glacial meltwater and/or Holocene fluvial activity

**Complex**  
 Where two or more classes of terrain are interspersed in a mosaic or repeating pattern on a scale too small to warrant meaningful differentiation, the proportion of each component in the combination is given in a two- or three-position designation set off by slashes denoting arbitrary percentage limits. Examples are:  
 'Mpl/LGv' indicates the area is underlain by approximately 60% morainal plain and up to 40% glaciolacustrine veneer  
 'Mv/LGv/FGp' indicates at least 60% of the area is underlain by morainal veneer, with up to 40% glaciolacustrine veneer and less than 15% glaciofluvial plain  
 'LGp/M' indicates more than 60% of the area is underlain by a glaciofluvial plain, with less than 15% moraine

**Stratigraphic Sequence**  
 Where materials of different origins or textures are known to be superimposed or can be confidently inferred, the sequence is indicated in conventional order using vertical separators, such as:  
 'sLGV | Mpy' indicates sandy glaciolacustrine veneer deposited on morainal plain

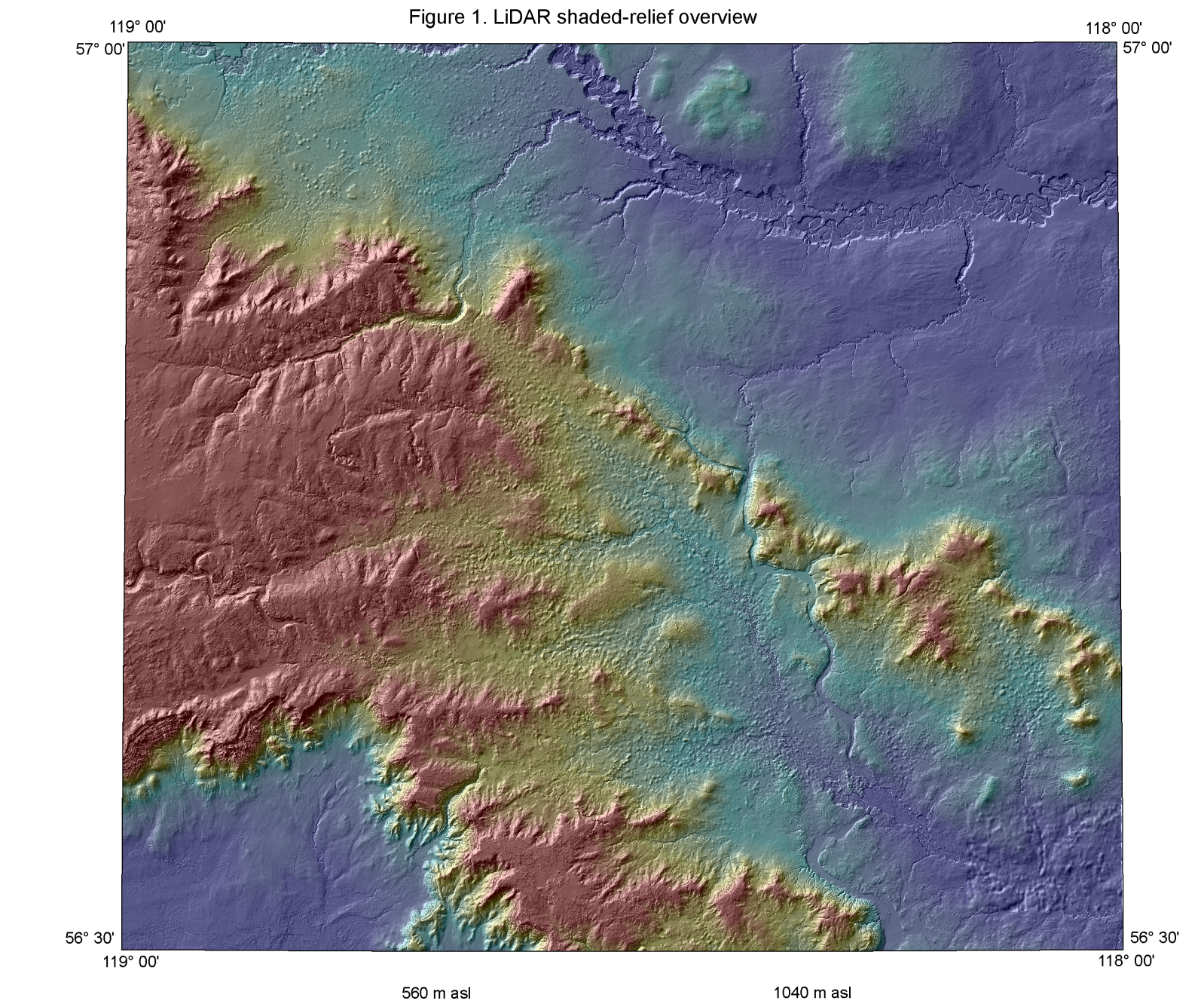
**Transitional Association**  
 Locally, two or more terrain units are juxtaposed by reason of related origin, temporal sequence or ambiguous geomorphological distinction. In the last case, both components may or may not be present. Such situations are identified by a compound designation marked by a hyphen. Examples are:  
 'LG-LGL' indicates glaciolacustrine indistinguishable from littoral and nearshore glaciolacustrine sediment

**Morphological Overprint**  
 Where a sequence of geomorphological processes has produced a multi-aspect or compound terrain fabric, the geomorphological modifier suffixes are appended in the inferred order of superposition. 'Mpy' indicates a morainal plain has been moulded into ridges and finally dissected by streams. 'FGph' indicates a glaciofluvial plain that includes discontinuous hummocks and ridges.

**Methodology**  
 Alberta Geological Survey completed the surficial mapping in 2012. Observations made during field mapping were combined with the interpretation of Light Detection and Ranging (LiDAR) data (Figure 1), supplied by Alberta Sustainable Resource Development, and digital orthorectified airphotos (1:50 000 scale). The LiDAR digital elevation model was used to delineate landforms through shaded-relief images created from three illumination directions. The shaded relief shown on the map was produced by fusing shaded-relief (315° illumination azimuth, 45° inclination) and slope-gradient images.

**Acknowledgements**  
 Alberta Geological Survey completed the fieldwork in 2008. R. Paulen and N. Atkinson performed the fieldwork and were assisted by N. Oviatt, C. Parker and W. Lehman. S. Pawley provided constructive comments that improved this map. K. Mckay completed the digital cartography and GIS. Spatial Data Warehouse Ltd. provided the base data.

**References**  
 Atkinson, N. (2012): Surficial geology of the Ray Lake area (NTS 84D/NW), Energy Resources Conservation Board, ERCB/AGS Map 557, scale 1:100 000.  
 Atkinson, N. and Paulen, R.C. (2009): Surficial geology of the Cleardale area (NTS 84D/SW), Energy Resources Conservation Board, ERCB/AGS Map 422, scale 1:100 000.  
 Atkinson, N. and Paulen, R.C. (2010): Surficial geology of the George Lake area (NTS 84D/SE), Energy Resources Conservation Board, ERCB/AGS Map 539, scale 1:100 000.  
 Evans, D.J.A., ed. (2005): Glacial land systems; Oxford University Press, New York, New York, 532 p.  
 Mathews, W.H. (1978): Quaternary stratigraphy and geomorphology of Charlie Lake (84A) map-area, British Columbia; Geological Survey of Canada, Paper 78-20, 25 p.  
 Mathews, W.H. (1980): Retreat of the last ice sheets in northeastern British Columbia and adjacent Alberta; Geological Survey of Canada, Bulletin 331, 22 p.  
 Paulen, R.C. (2004): Surficial geology of the Manning area (NTS 84C/NW), Energy and Utilities Board, EUB/AGS Map 292, scale 1:100 000.



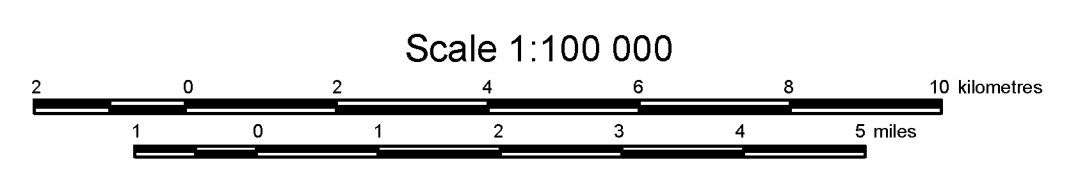
Alberta Geological Survey  
 (780) 422-1927  
 www.agi.gov.ab.ca

Published 2012  
 ISBN 978-1-4001-0077-0

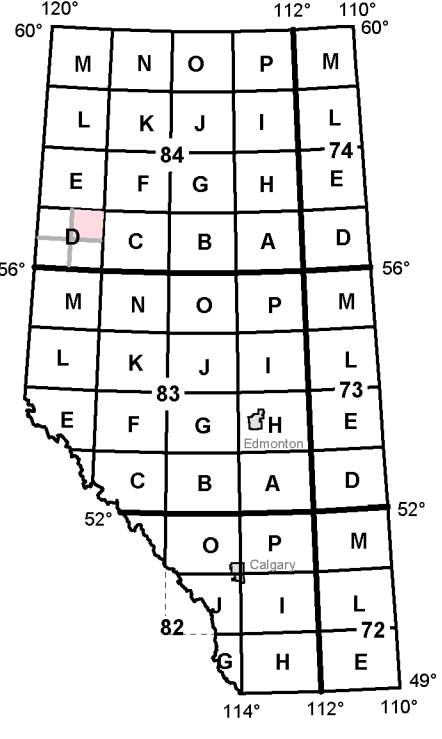
**Map 558**

**Surficial Geology of the South Whitemud Lake Area (NTS 84D/NE)**

Geology by: N. Atkinson



Projection: Universal Transverse Mercator  
 Datum: North American Datum, 1983



**Recommended Reference Format**  
 Atkinson, N. (2012): Surficial geology of the South Whitemud Lake area (NTS 84D/NE) Energy Resources Conservation Board, ERCB/AGS Map 558, scale 1:100 000.