

FUNDING

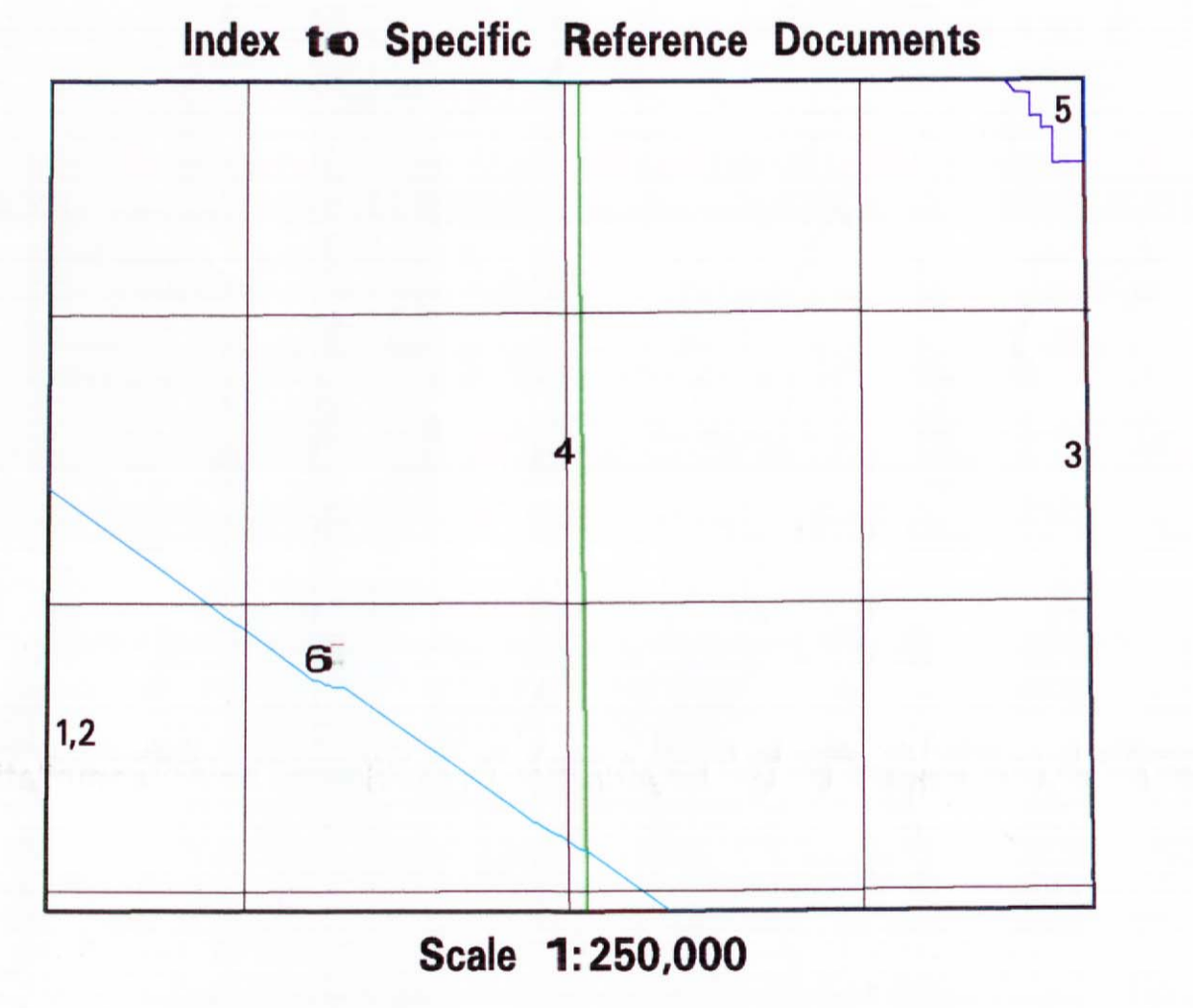
Funds for this project have been provided by the Alberta Department of Energy and by the Alberta Research Council.

RELIABILITY AND USE

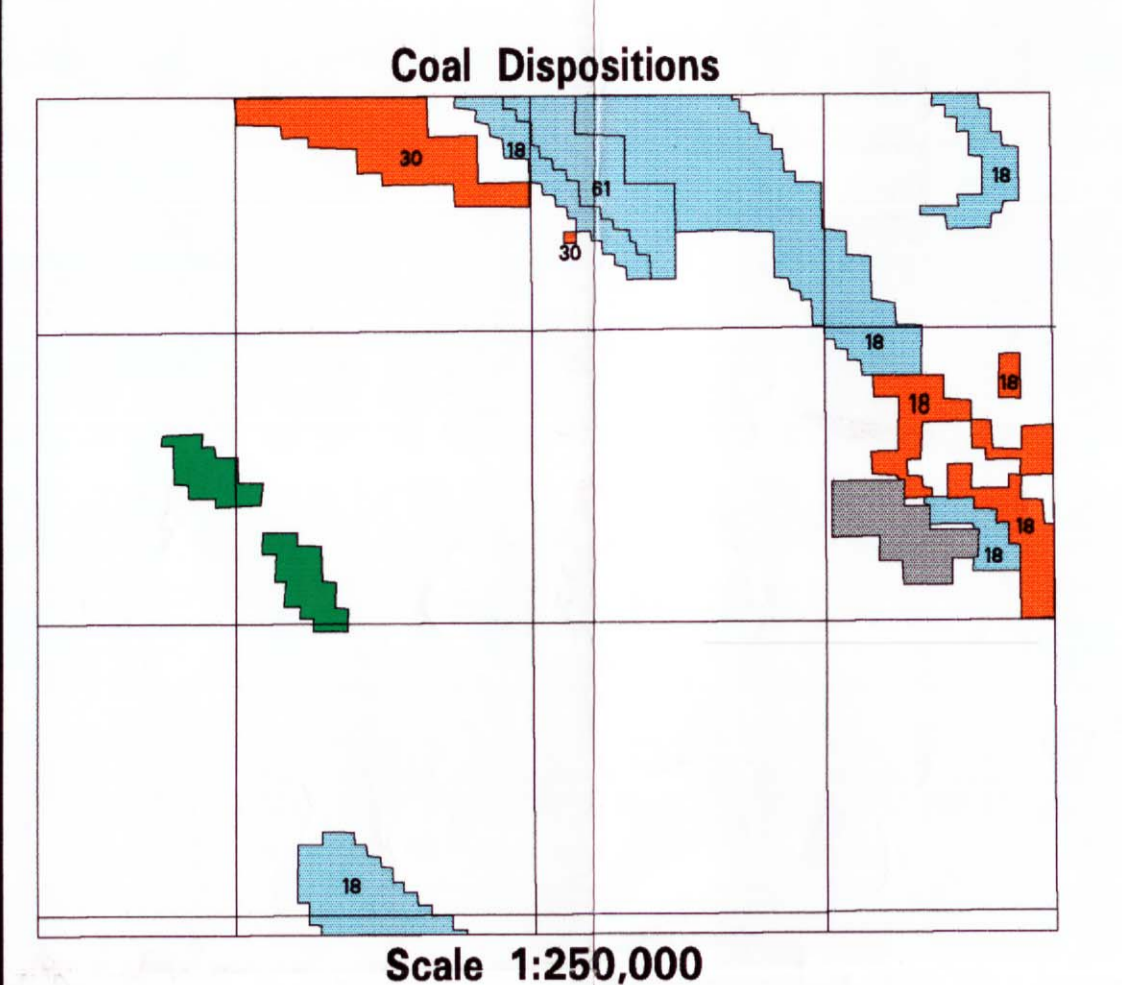
Information contained on this map sheet has been derived from a number of different sources, scales and formats (digital and hard copy). While every attempt has been made to accurately portray the data, this map is intended to provide a basic compilation and overview of Coal Resources; for more specific informational needs please contact the Head, Minerals and Coal Geoscience Section, Alberta Geological Survey, Alberta Research Council, P.O. Box 8330, Edmonton, Alberta, T6H 5X2.

NOTE

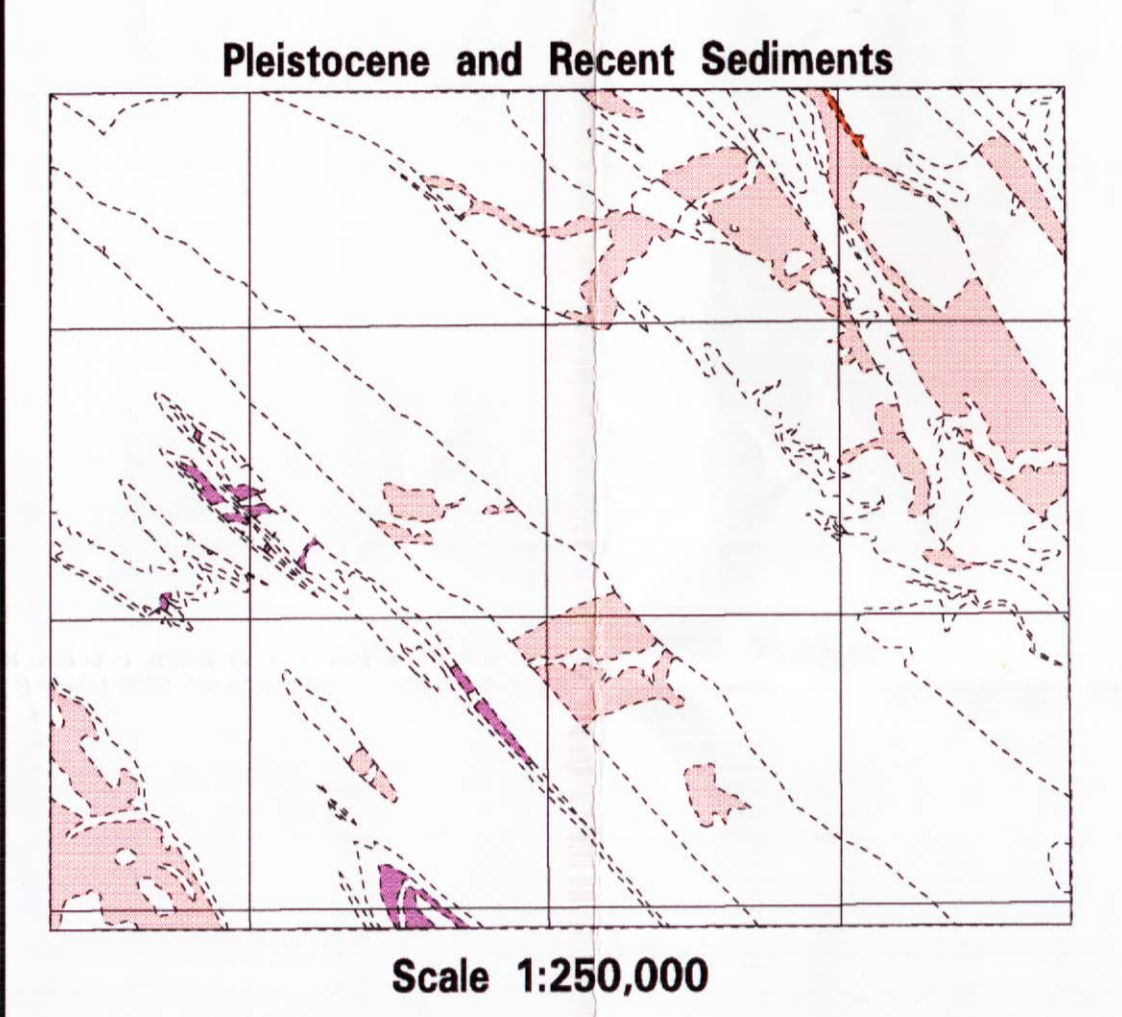
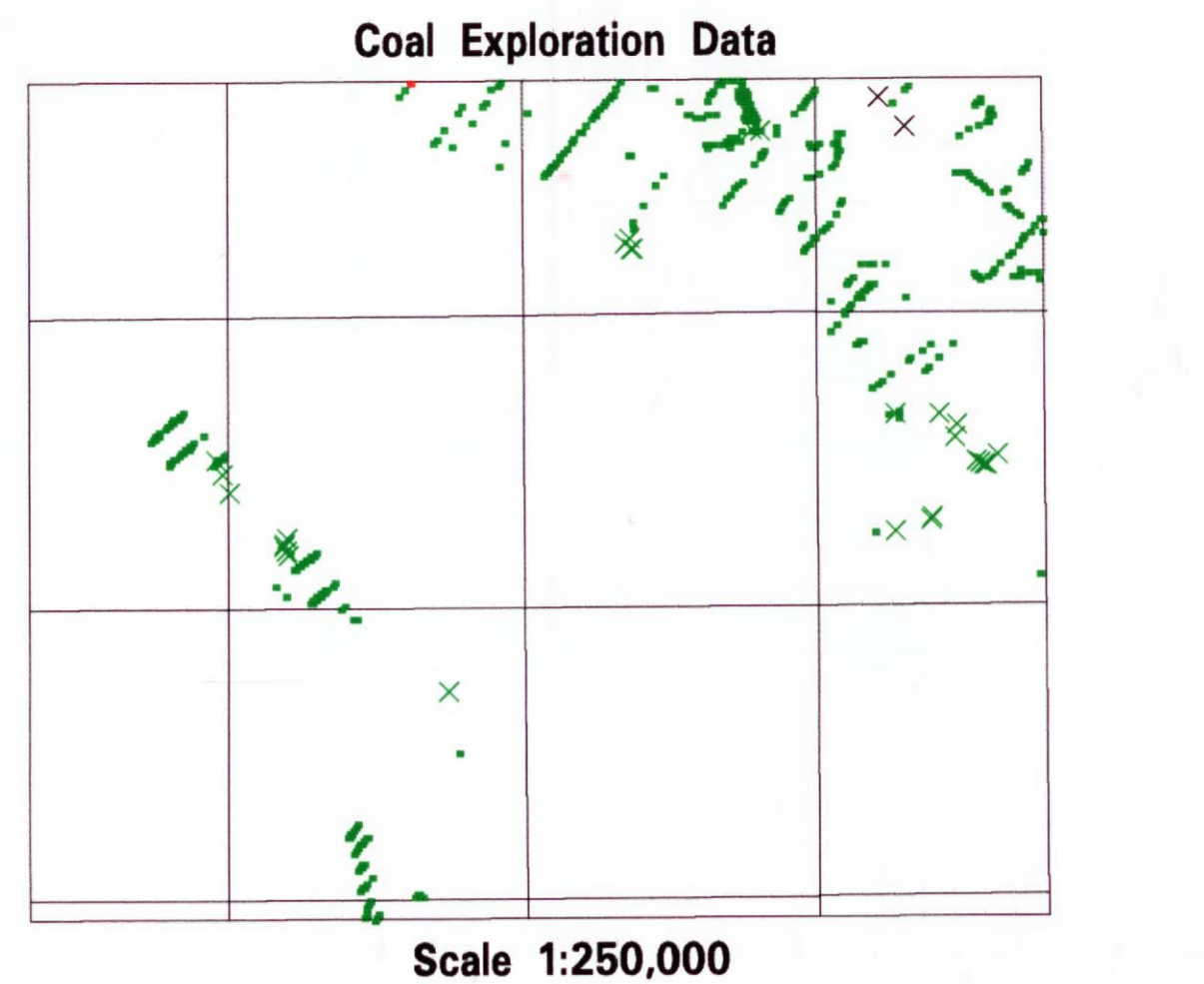
* Insets of 'Coal Development Potential' and 'Coal Bed Methane Resource Potential' are semiquantitative and subjective evaluations of the potential of the coal development based on limited data and reflecting current technology and general economic factors. CAUTION SHOULD BE EMPLOYED IN THE USE OF THESE ANALYSES! The analyses are based on mainly geological criteria and do not take into account governmental restrictions or evaluate actual economic constraints to develop now or in the future. To establish a 'potential map' for a unique set of criteria, please contact the AGS.



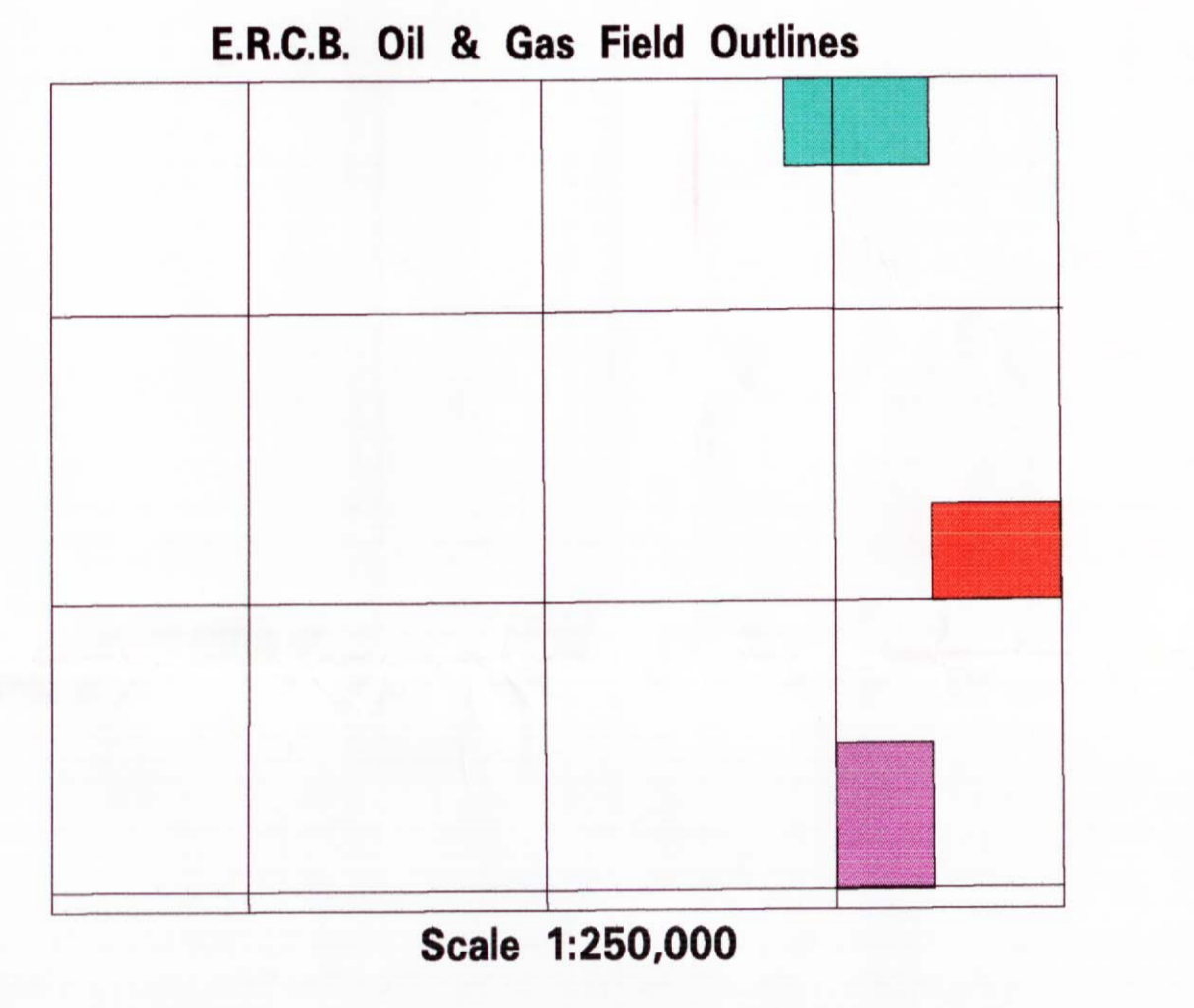
- INDEX TO SPECIFIC REFERENCE DOCUMENTS for the MAPSHEET NTS 83C/15
1. Douglas R.J.W. and Label, D. 1993. CARDINAL RIVER mapsheet (83C/15). Scale 1:50 000. Geological Survey of Canada. Map 1828A. Outline identified as 1 on GIS plot.
 2. MacKay, B.R. 1943. FOOTHILLS BELT OF CENTRAL ALBERTA. Geological Survey of Canada. Preliminary Map 43-3. Scale 1 inch: 2 miles. Outline identified as 2 on GIS plot.
 3. MacKay, B.R. 1940. PEMBINA FORKS mapsheet (83C/15 East Half). Scale 2 inches: 1 mile. Geological Survey of Canada. Preliminary Map 40-15. Outline identified as 3 on GIS plot.
 4. MacKay, B.R. 1940. GRAVE FLATS mapsheet (83C/15 West Half). Scale 2 inches: 1 mile. Geological Survey of Canada. Preliminary Map 40-15. Outline identified as 4 on GIS plot.
 5. Dunn, J. 1982-02. LENDRUM CREEK PROPERTY. Esso Minerals Canada - Coal Department. Outline identified as 5 on GIS plot.
 6. Allan, J.A. and Rutherford, R.L. 1924. GEOLOGY ALONG THE BLACKSTONE, BRAZEAU AND PEMBINA RIVERS IN THE FOOTHILLS BELT, ALBERTA. (ALBERTA) Scientific and Industrial Research Council, Geological Division. Report No.9 (including Map No.5). Scale 1:125,720. Outline identified as 6 on GIS plot.



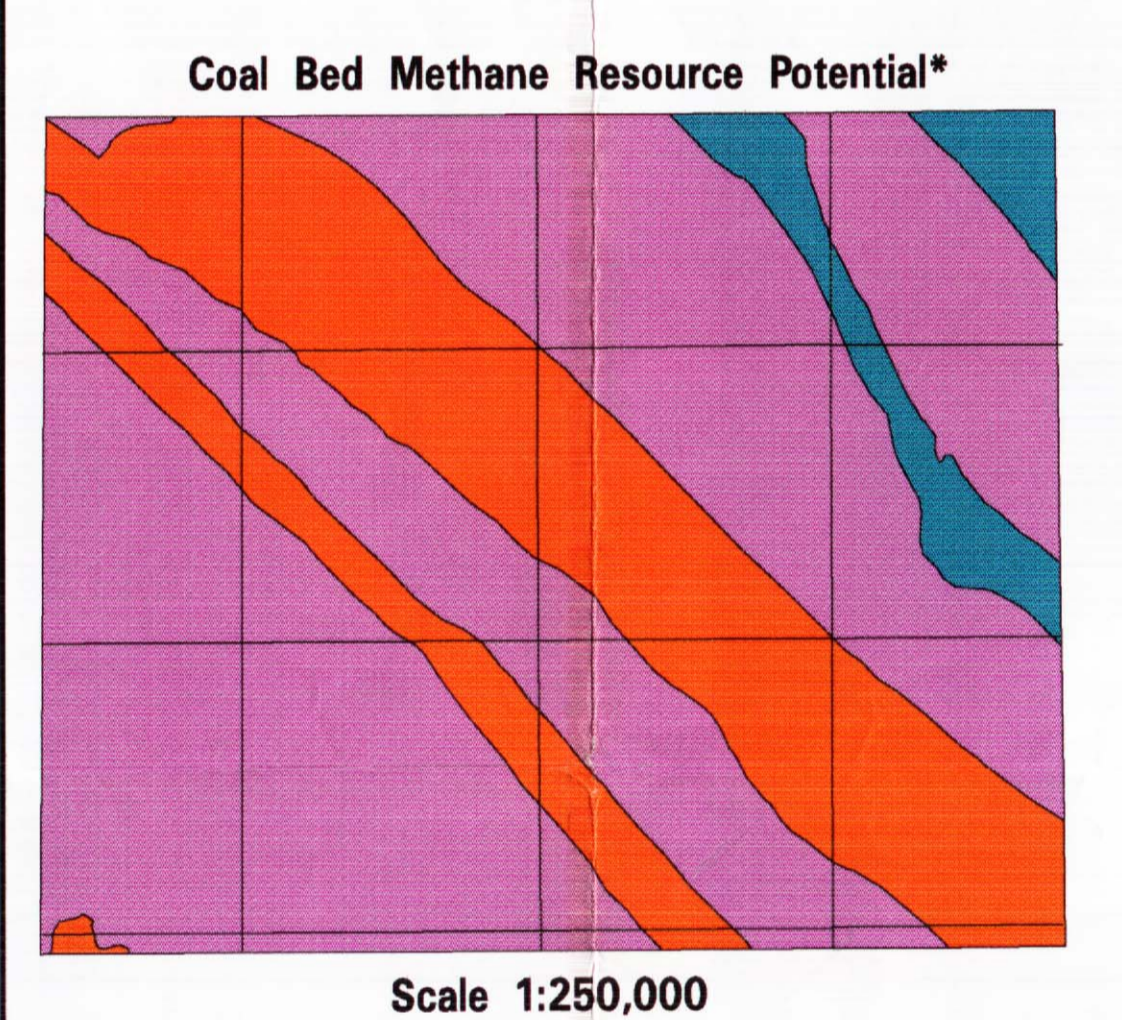
| Company # | Company Name |
|-----------|-------------------------|
| 18 | Luscar Ltd. |
| 30 | Shell Canada Ltd. |
| 61 | Dentherm Resources Ltd. |



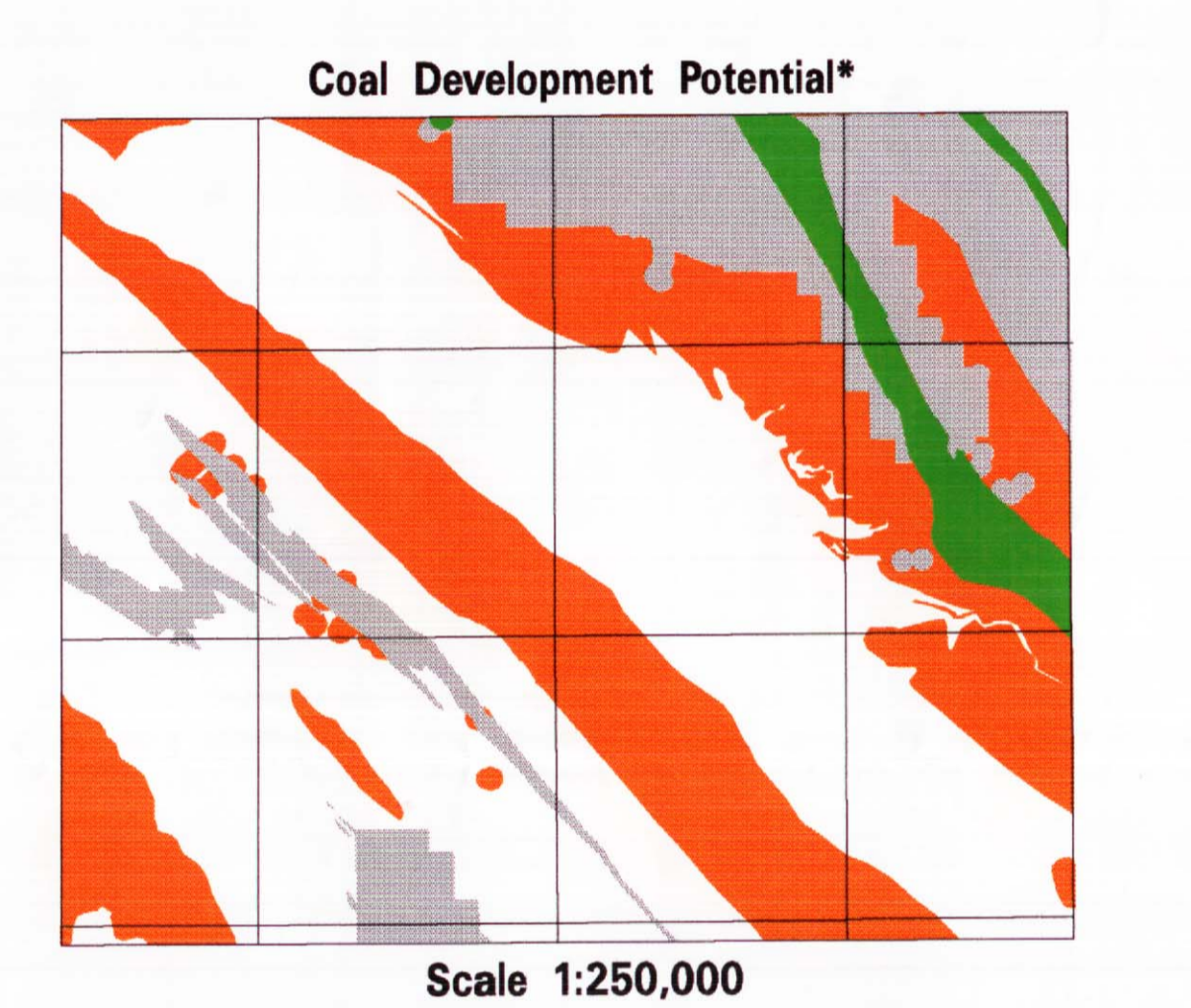
- Over Paskapoo Formation
- Over Brazeau Formation
- Over Luscar Group



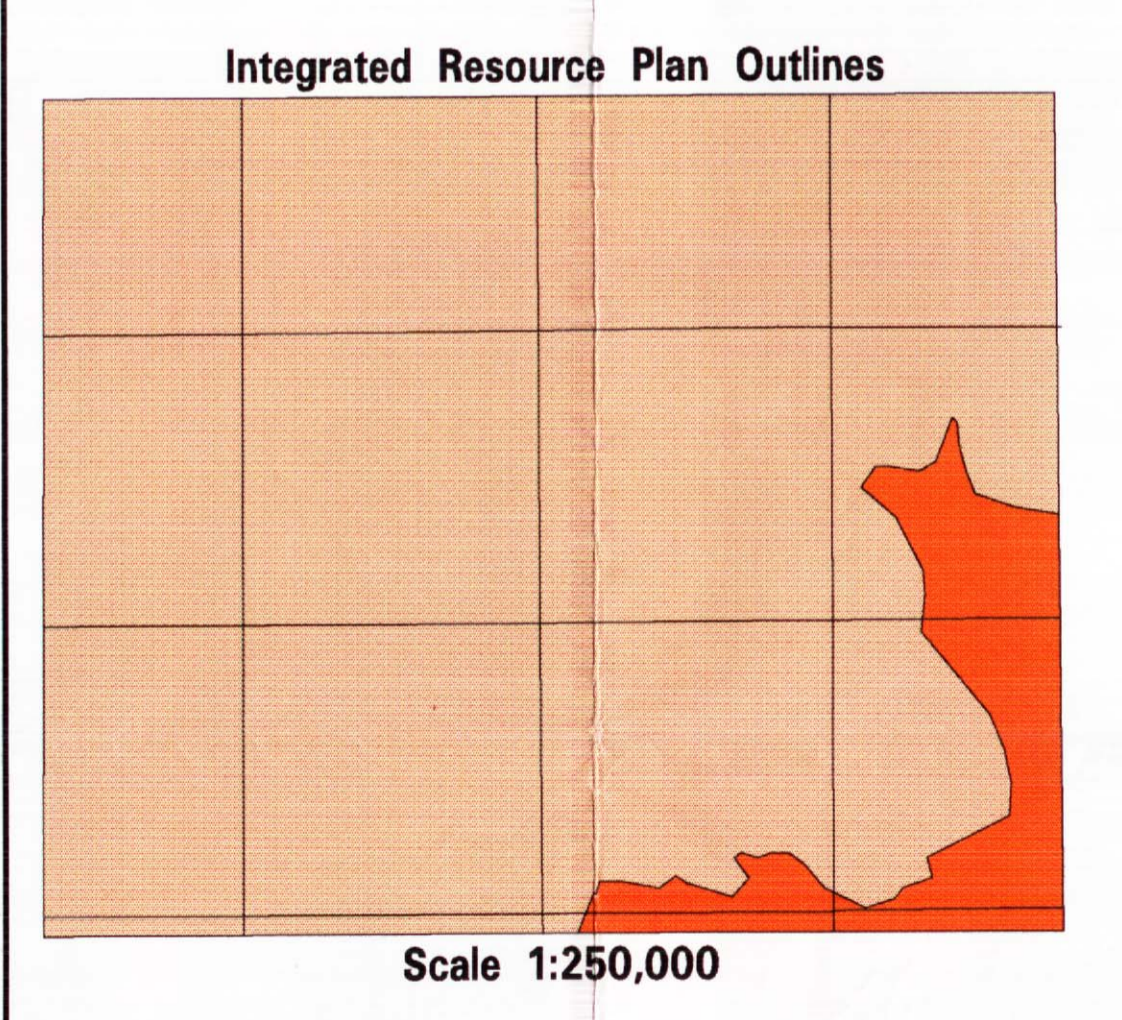
- Lovett River Gas Field
- Opabin Gas Field
- Voyager Gas Field



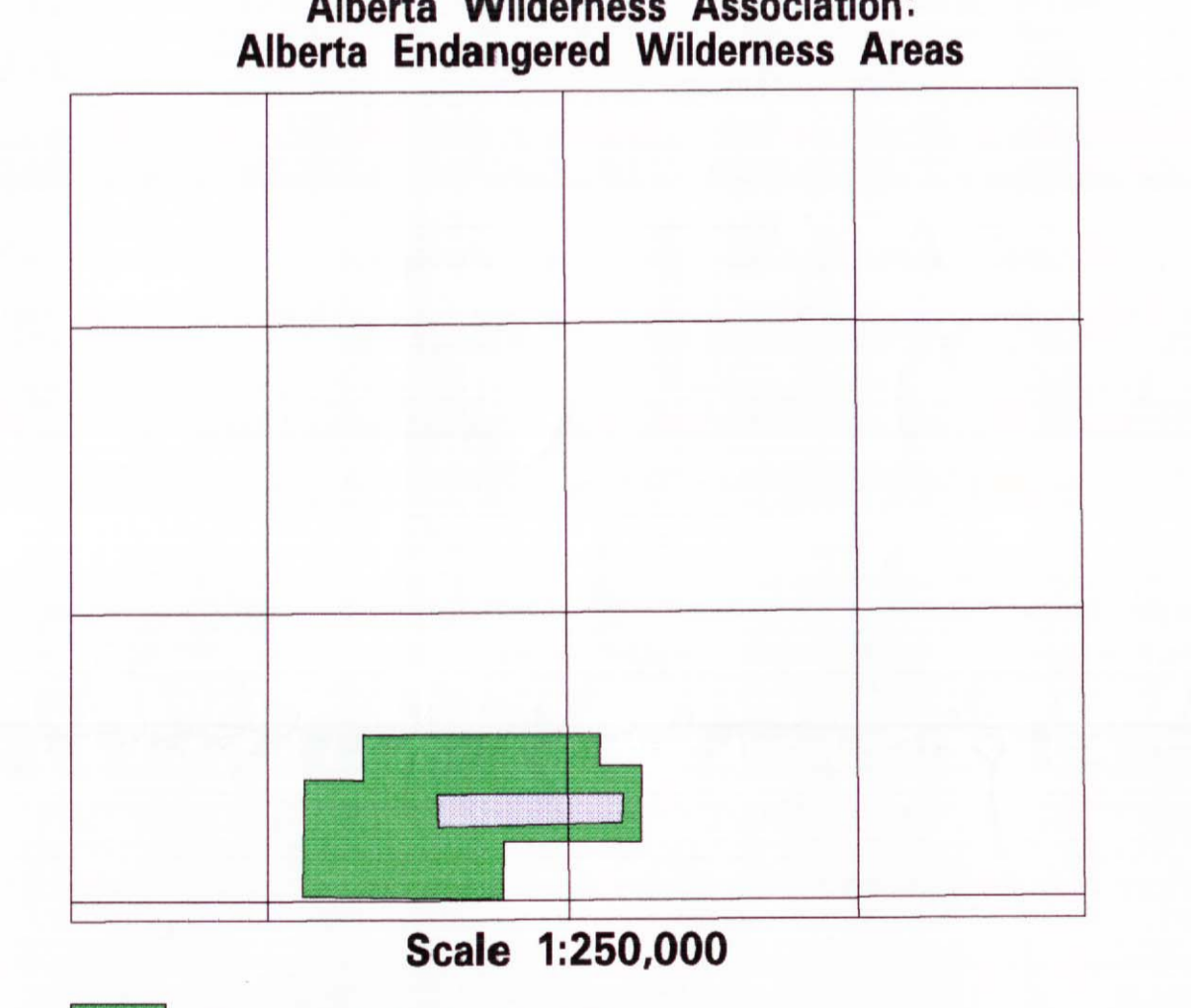
- Excellent
- Very Good
- Good
- Fair To Poor
- Poor To Nil



- High Potential
- Medium Potential
- Low Potential
- No Data Available



- Coal Branch Sub-Regional Integrated Resource Plan
- Nordegg-Red Deer Integrated Resource Plan



- Proposed Ecological Reserve
- Marshybank Ecological Reserve (Existing)

**Regional Coal Mapping
Cardinal River, Alberta - NTS 83C/15**

R.J.H. Richardson, W. Langenberg, D.K. Chao, D. Fietz*

Original Compilation: 1992
Revised and Released: 1994
Alberta Research Council Map: RCM13

* ELAD Enterprises Inc.