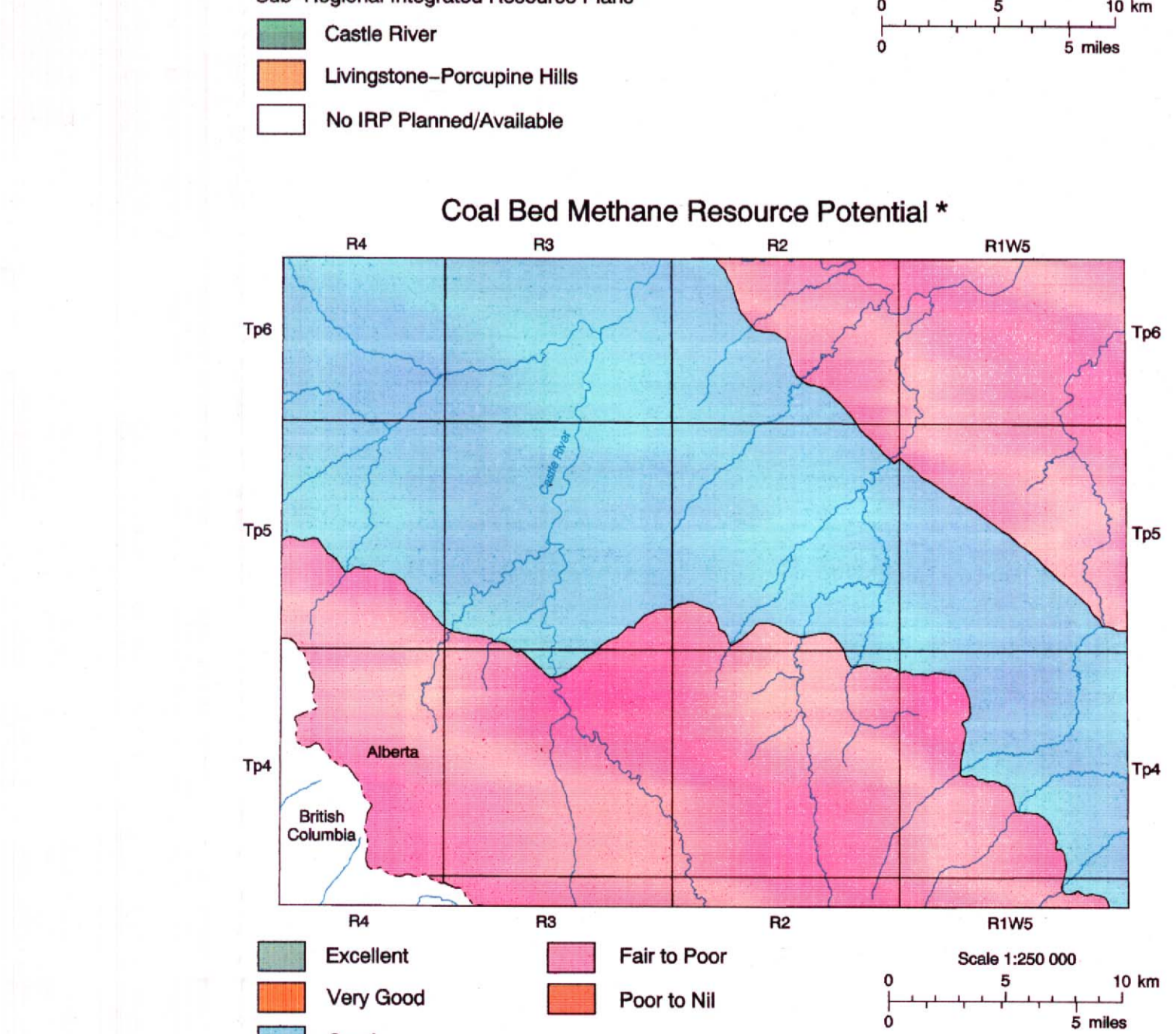
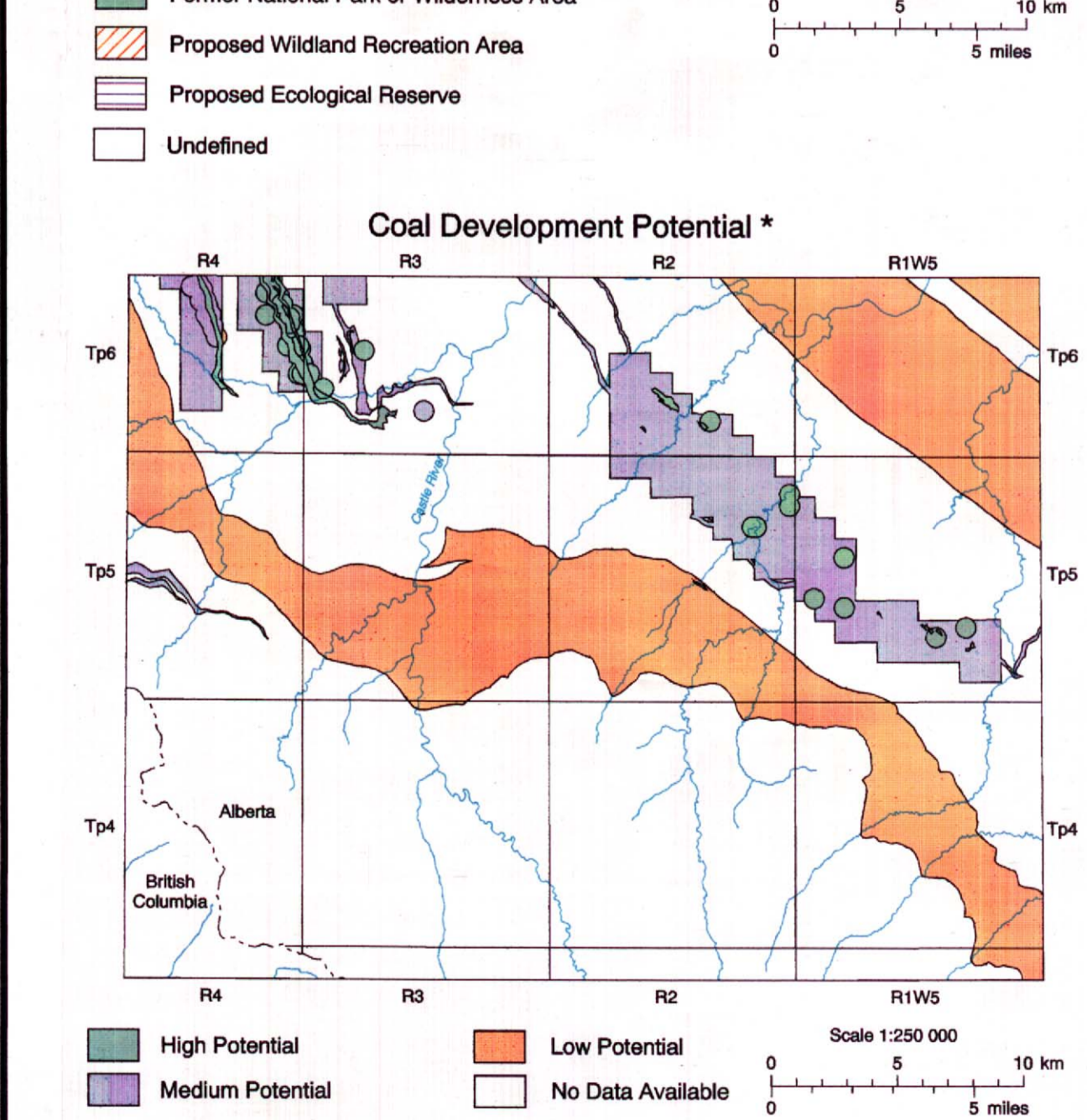
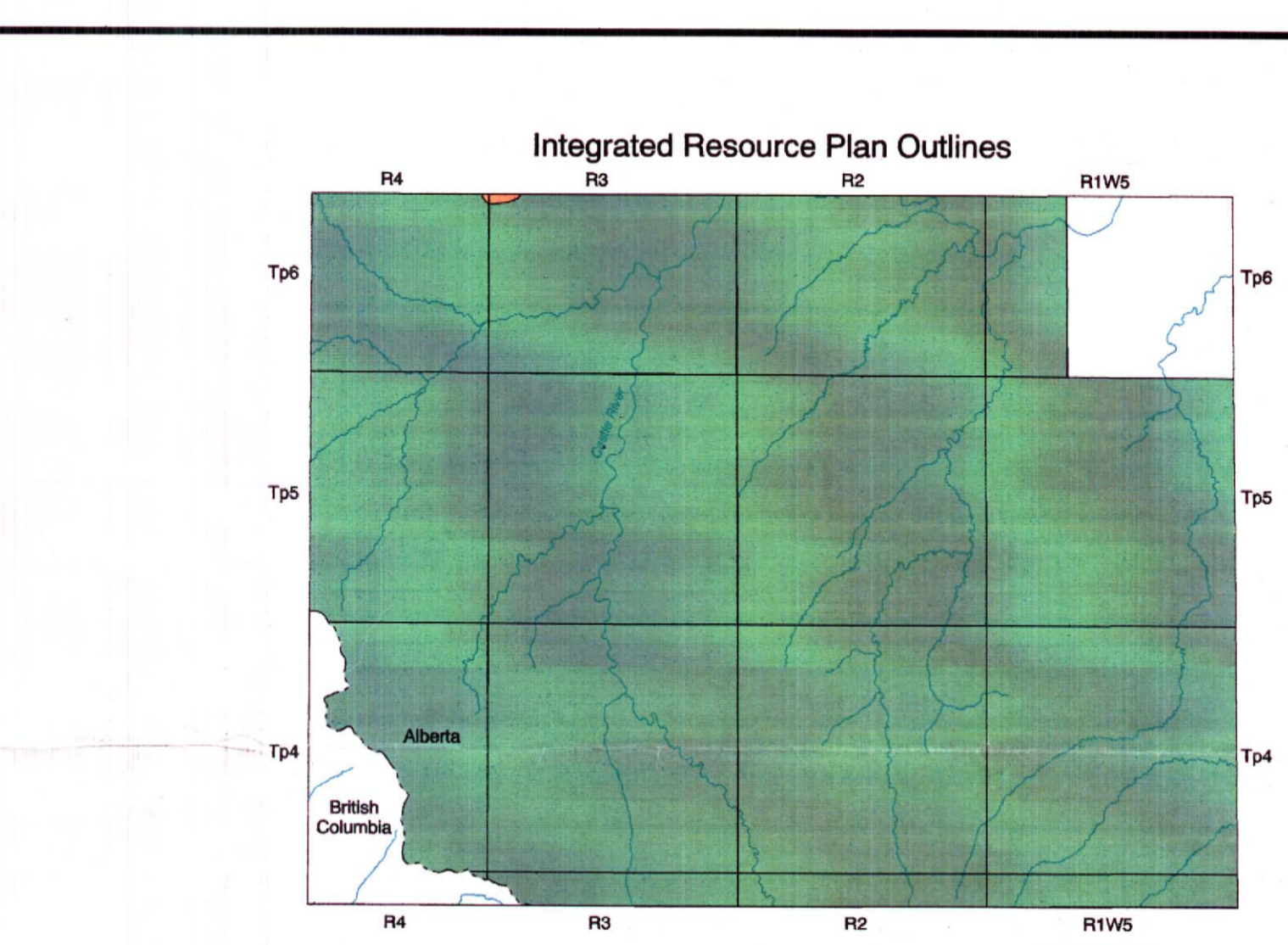
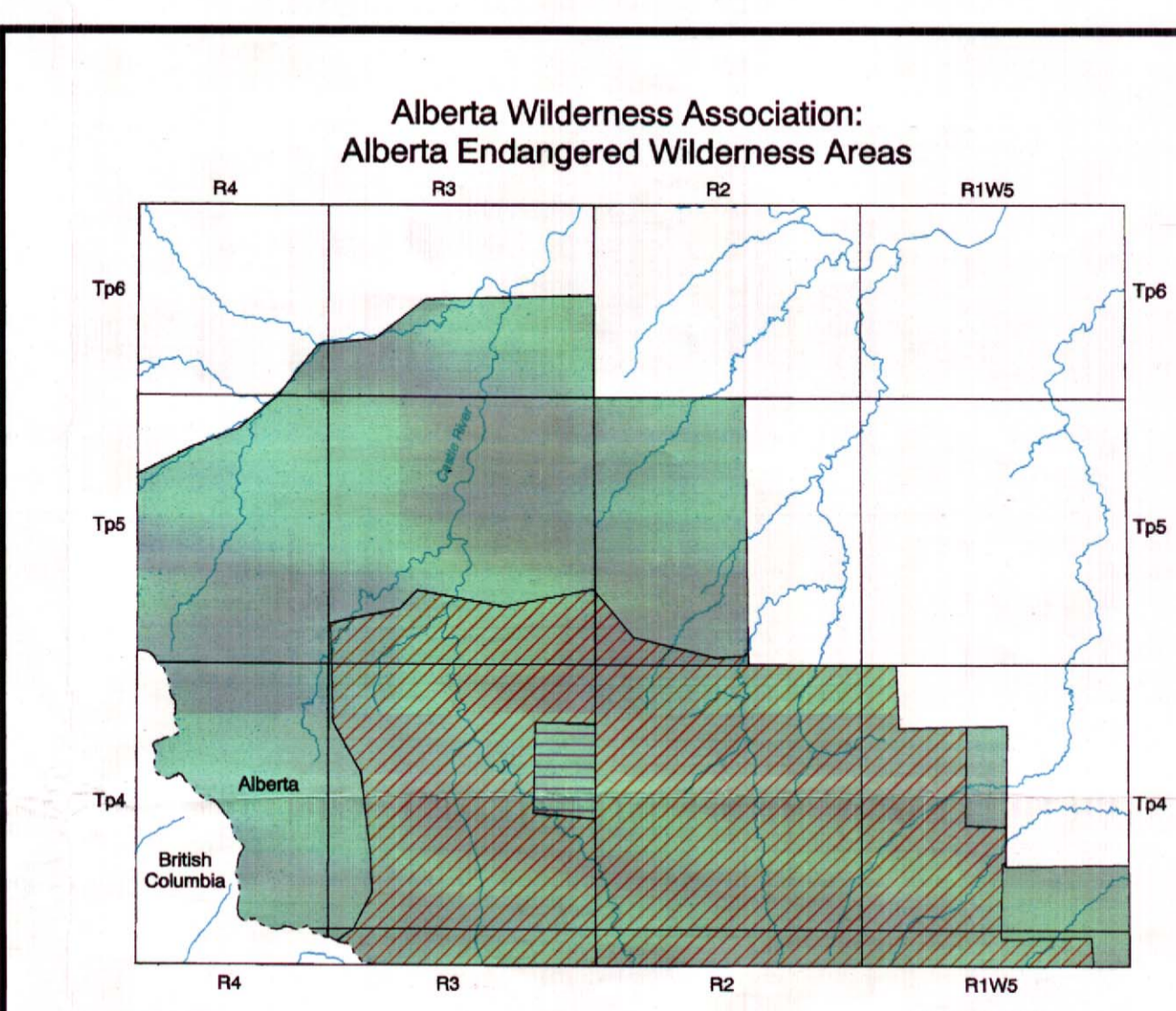


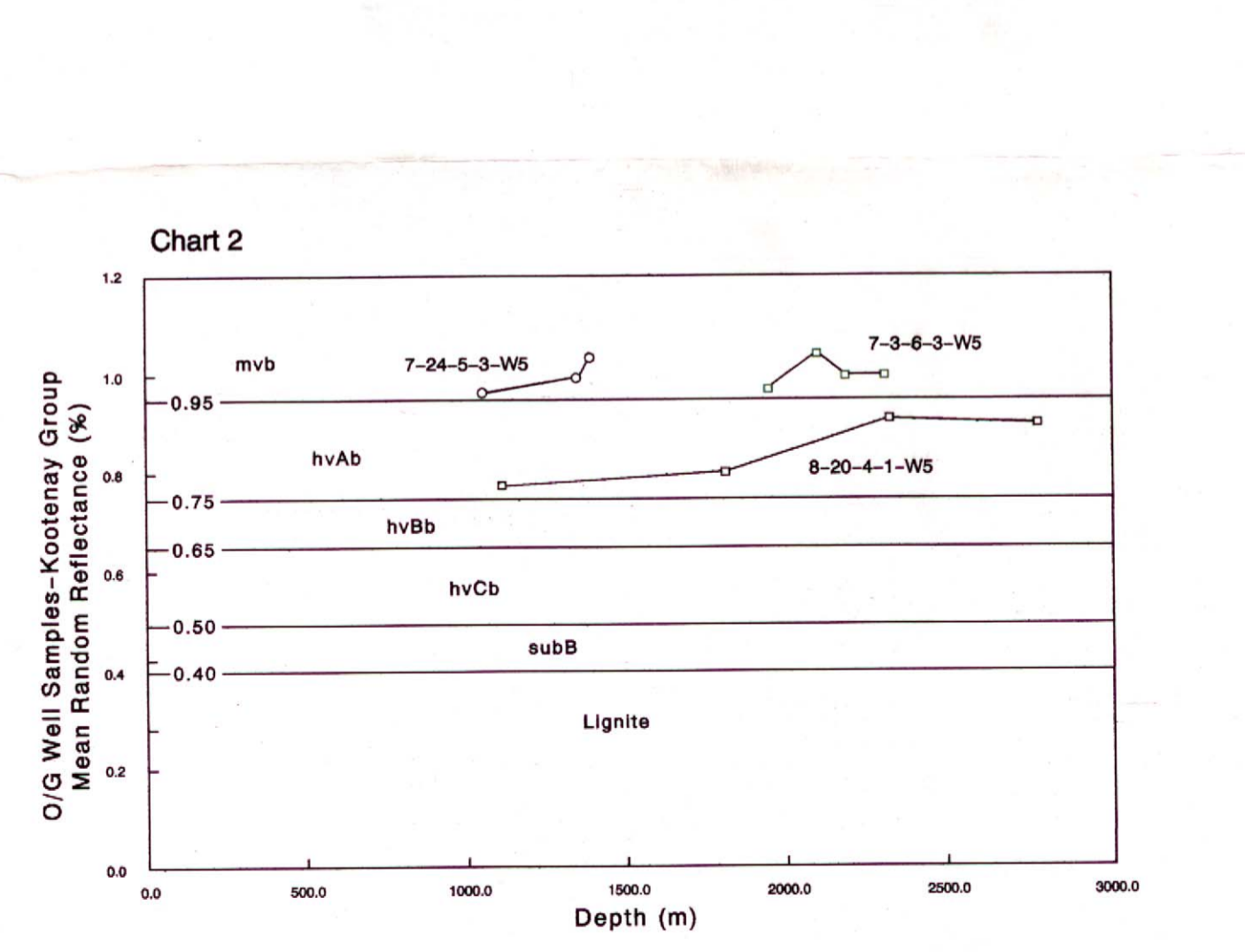
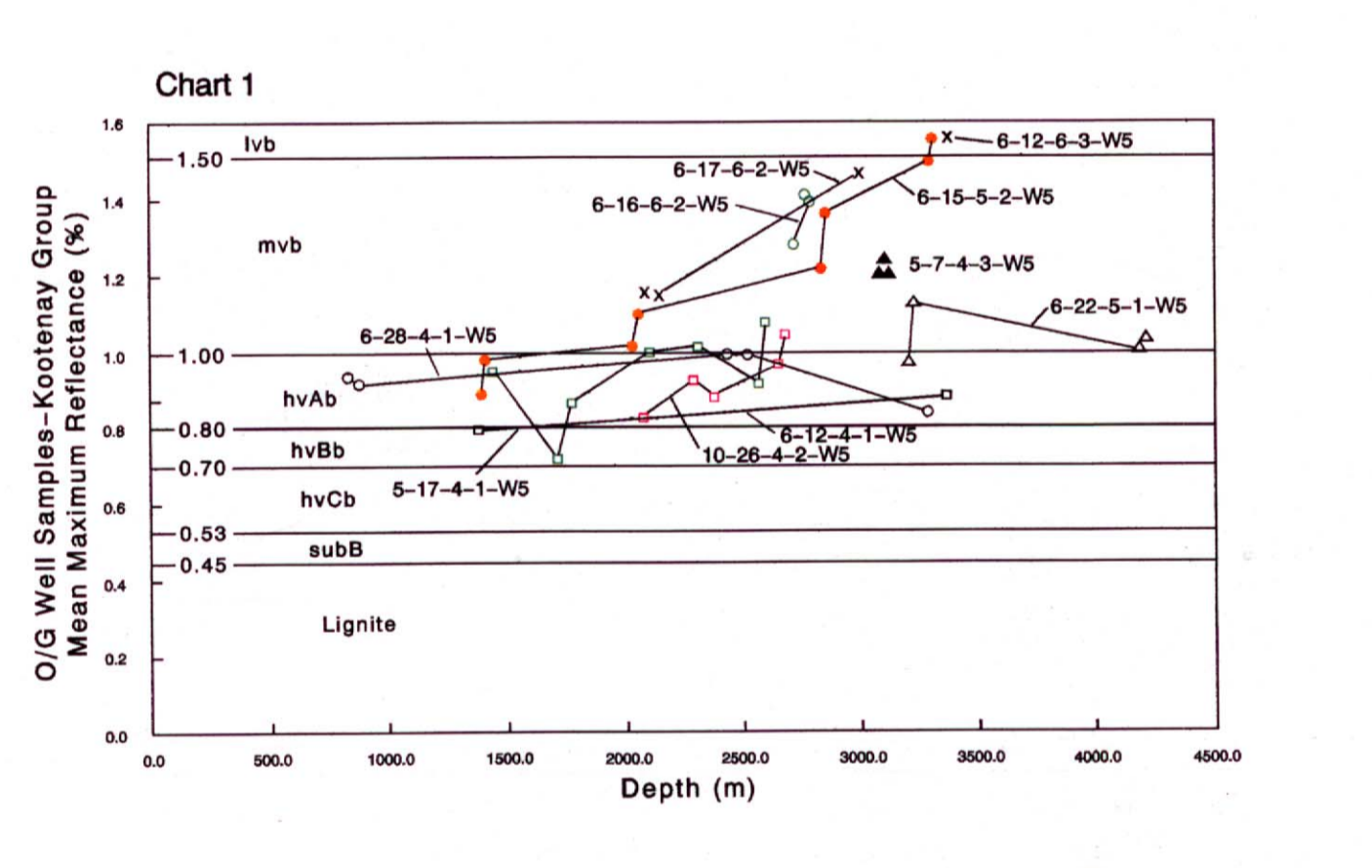
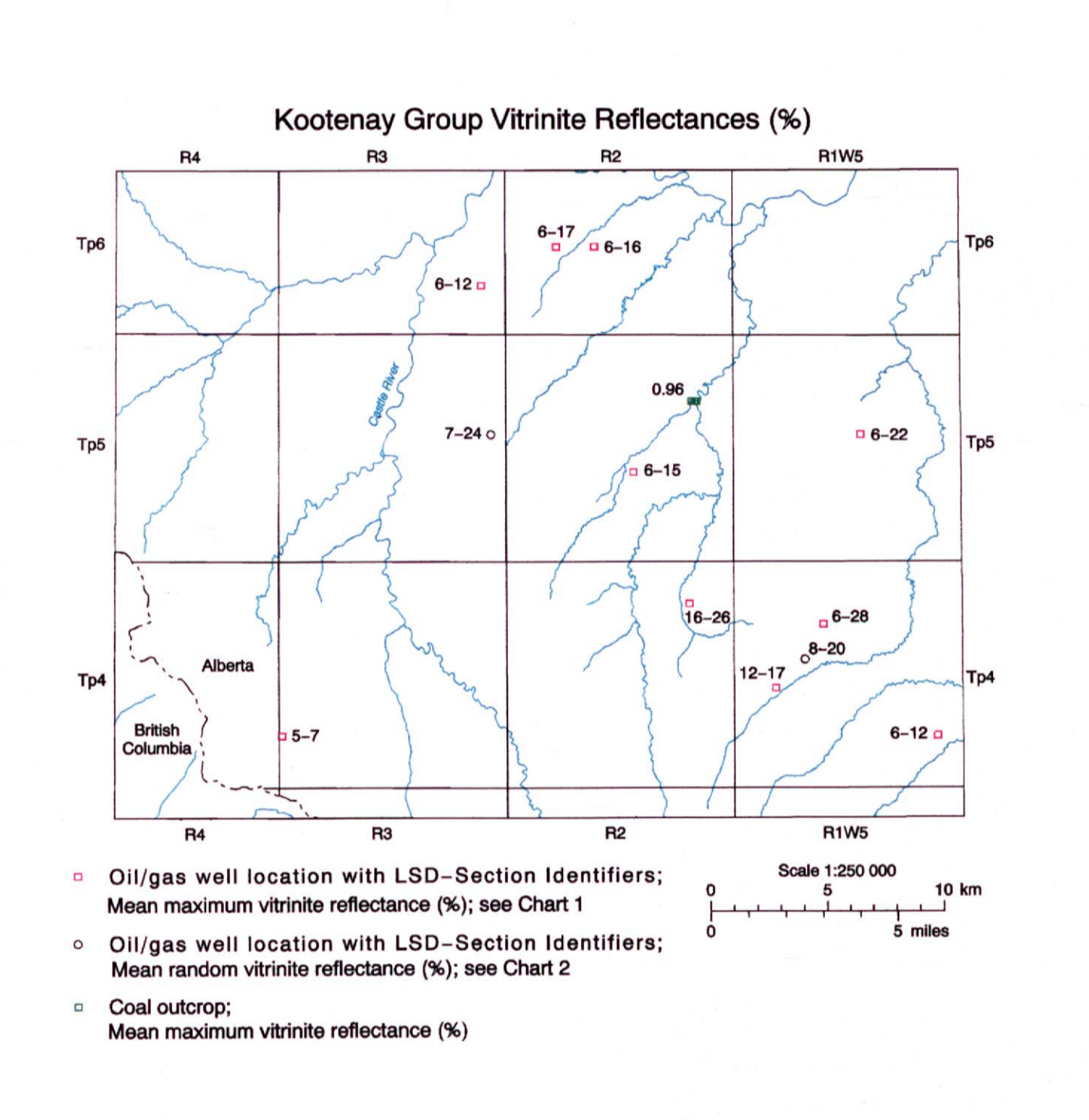
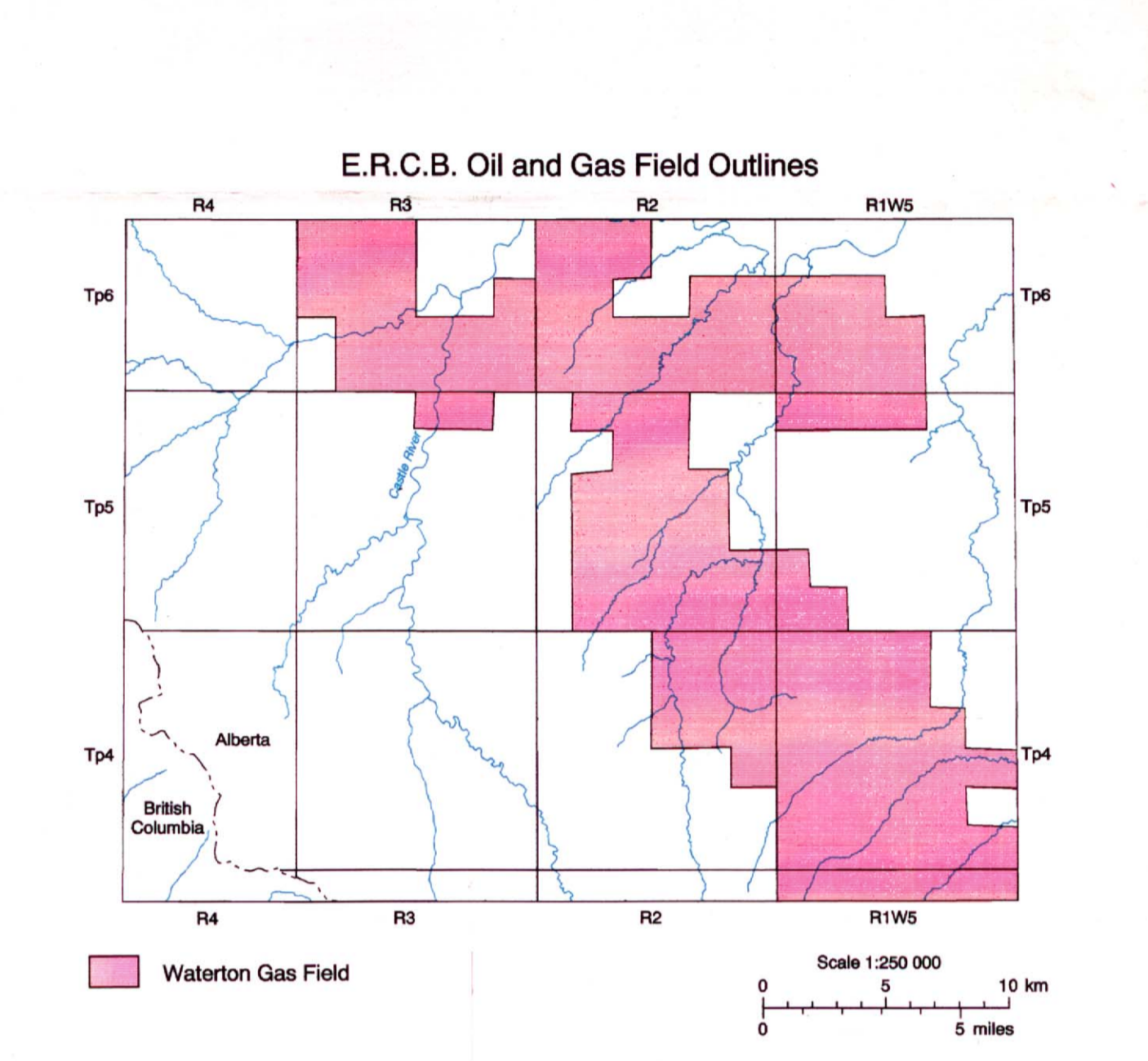
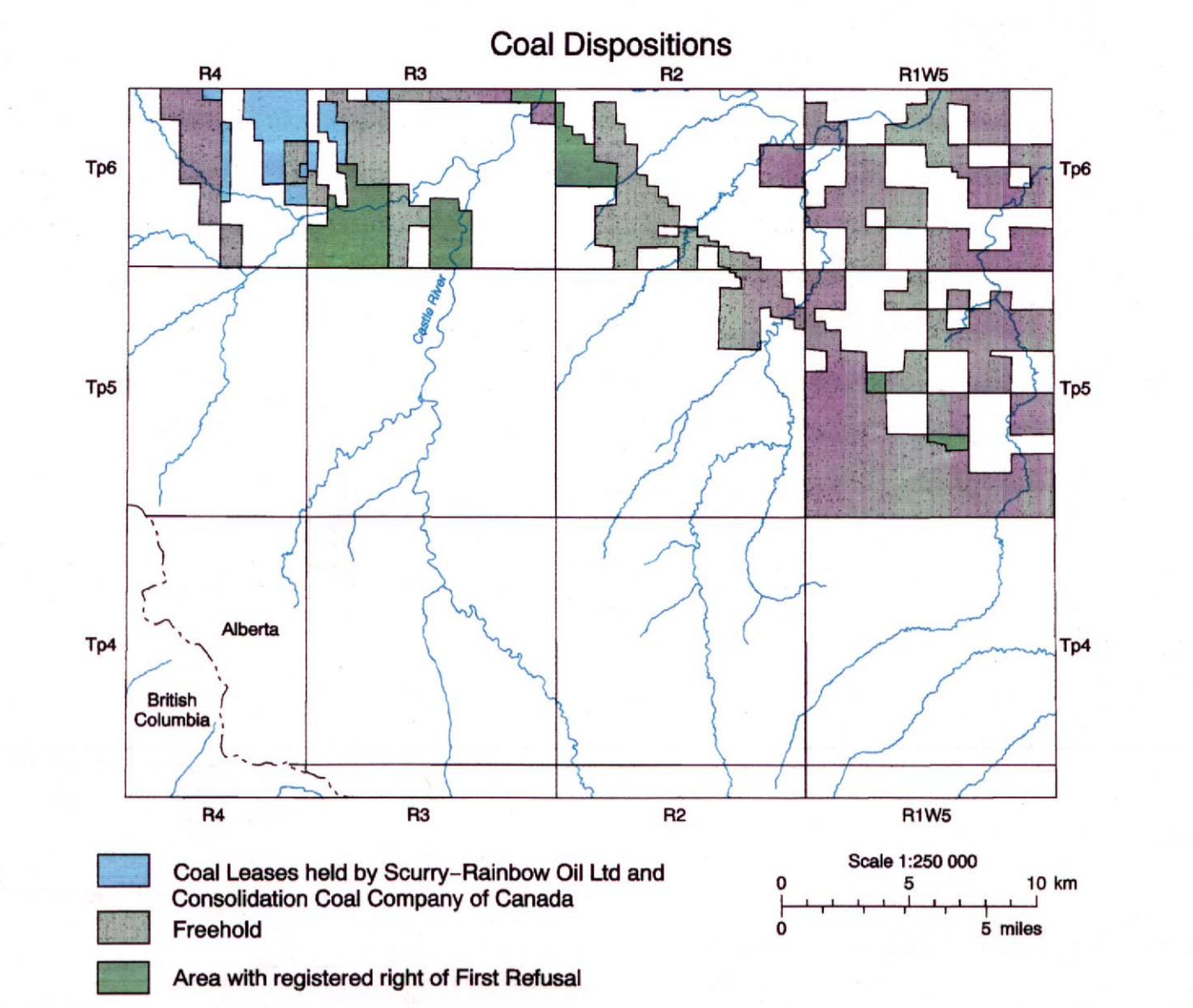
- INDEX TO SPECIFIC REFERENCE DOCUMENTS for the MAPSHEET NTS 82G/8**
- Norris, D.K. 1959. CARBONDALE RIVER mapsheet (82G/8 west half). Geological Survey of Canada. Map 5-1959. Scale 1:63 360. Outline identified as 1 on GIS plot.
 - Hage, C.O. 1943. BEAVER MINES mapsheet (82G/8 east half). Geological Survey of Canada. Map 739A. Scale 1:63 360. Outline identified as 2 on GIS plot.
 - Clow, W.H.A. and Crockford, M.B. 1951. Geology of CARBONDALE RIVER area, Alberta. Alberta Research Council Report 59 (includes Map 22). Scale 1:63 360. Outline identified as 3 on GIS plot.
 - Consolidation Coal Company of Canada. 1980-01. Drilling Application, LYNX CREEK. ERCB Application No. 800062. Fiche Application from ERCB Records Center. Outline identified as 4 on GIS plot.
 - Consolidation Coal Company of Canada. 1980-05. Drilling Application, ADANAC PROPERTY. ERCB Application No. 800061. Fiche Application from ERCB Records Center. Outline identified as 5 on GIS plot.
 - Norris, D.K. 1989. Geology of BEAVER MINES, West Half (Carbondale River). Alberta and British Columbia (NTS 82G/8 W1/2). Geological Survey of Canada Open File Report 2405. Scale 1:50 000. Outline identified as 6 on GIS plot.

Reliability and Use
Information contained on this map sheet has been derived from a number of different sources, scales and formats (digital and hard copy). While every attempt has been made to accurately portray the data, this map is intended to provide a basic compilation and overview of coal resources; for more specific information please contact the Head, Minerals and Coal Geoscience Section, Alberta Geological Survey, Alberta Research Council, P.O. Box 8330, Edmonton, Alberta T6H 0Z2.

Funding
Funds for this project have been provided by the Alberta Department of Energy and by the Alberta Research Council.



NOTE:
*Insets of 'Coal Development Potential' and 'Coal Bed Methane Resource Potential' are semiquantitative and subjective evaluations of the potential of the coal development based on limited data and reflecting current technology and general economic factors. CAUTION SHOULD BE EMPLOYED IN THE USE OF THESE ANALYSES! The analyses are based on mainly geological criteria and do not take into account governmental restrictions or evaluate actual economic constraints to development now or in the future. To establish a 'potential map' for a unique set of criteria, please contact the AGS.



Regional Coal Mapping Beaver Mines, Alberta - NTS 82G/8

R.J.H. Richardson, W. Langenberg,
D.K. Cho, D. Fletz *
Published 1992
Alberta Research Council Map: RCM10
Cartography by Alberta Research Council, Corporate Affairs
*ELAD Enterprises Inc.

ALBERTA RESEARCH COUNCIL Alberta Geological Survey