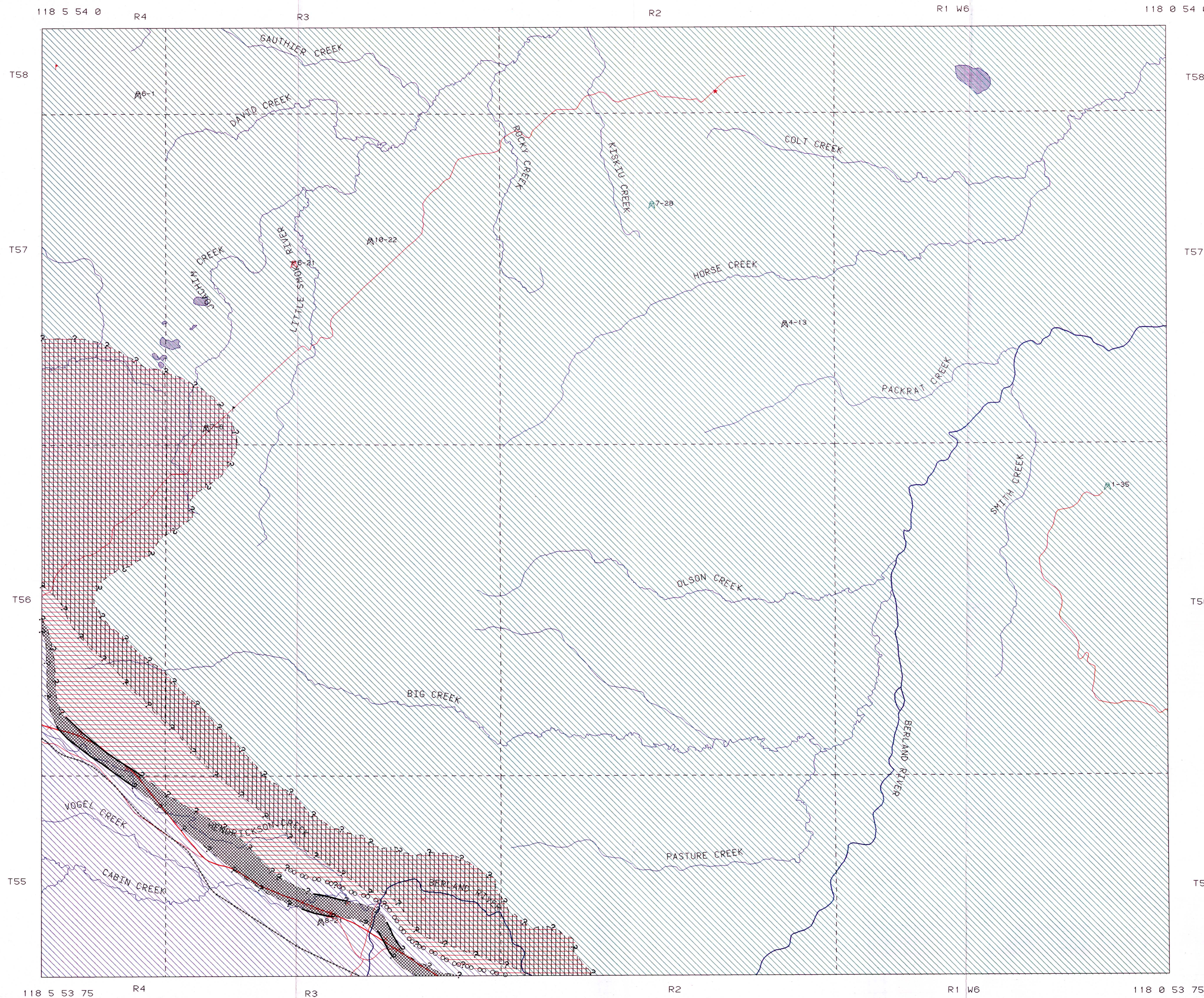
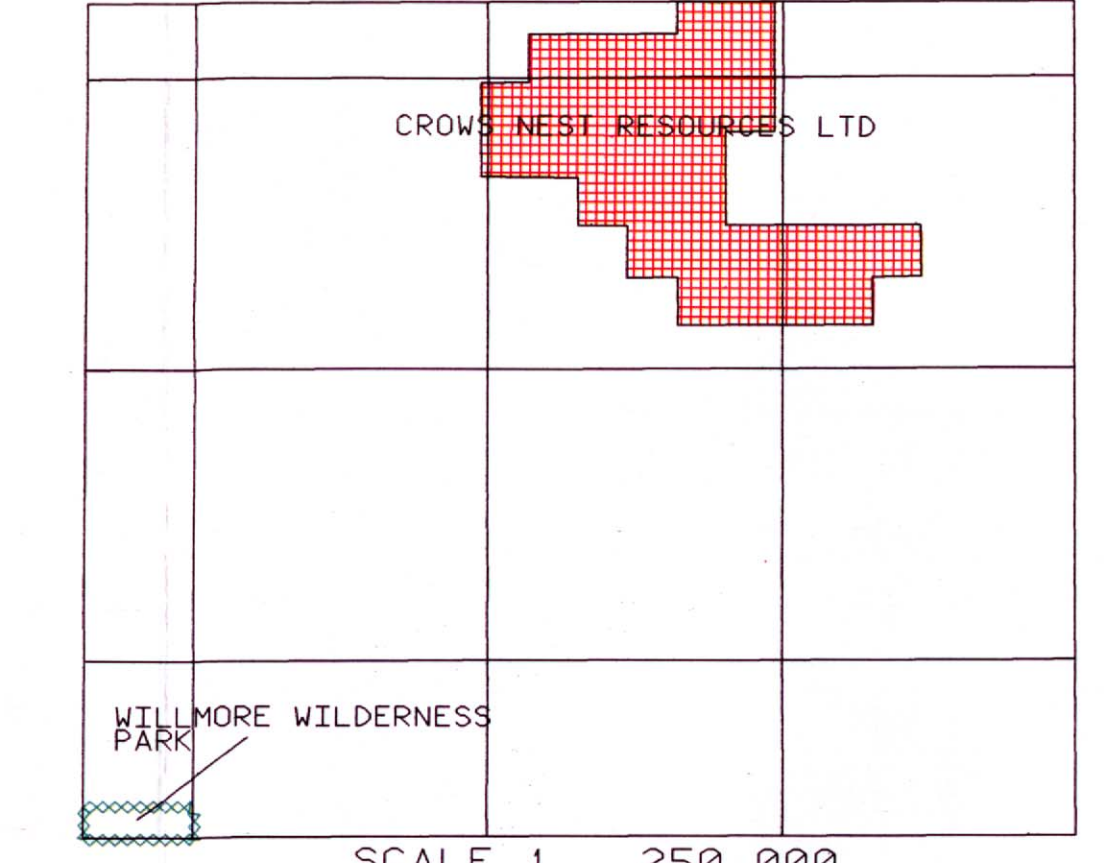


# REGIONAL COAL MAPPING - DONALD FLATS NTS 83E/16

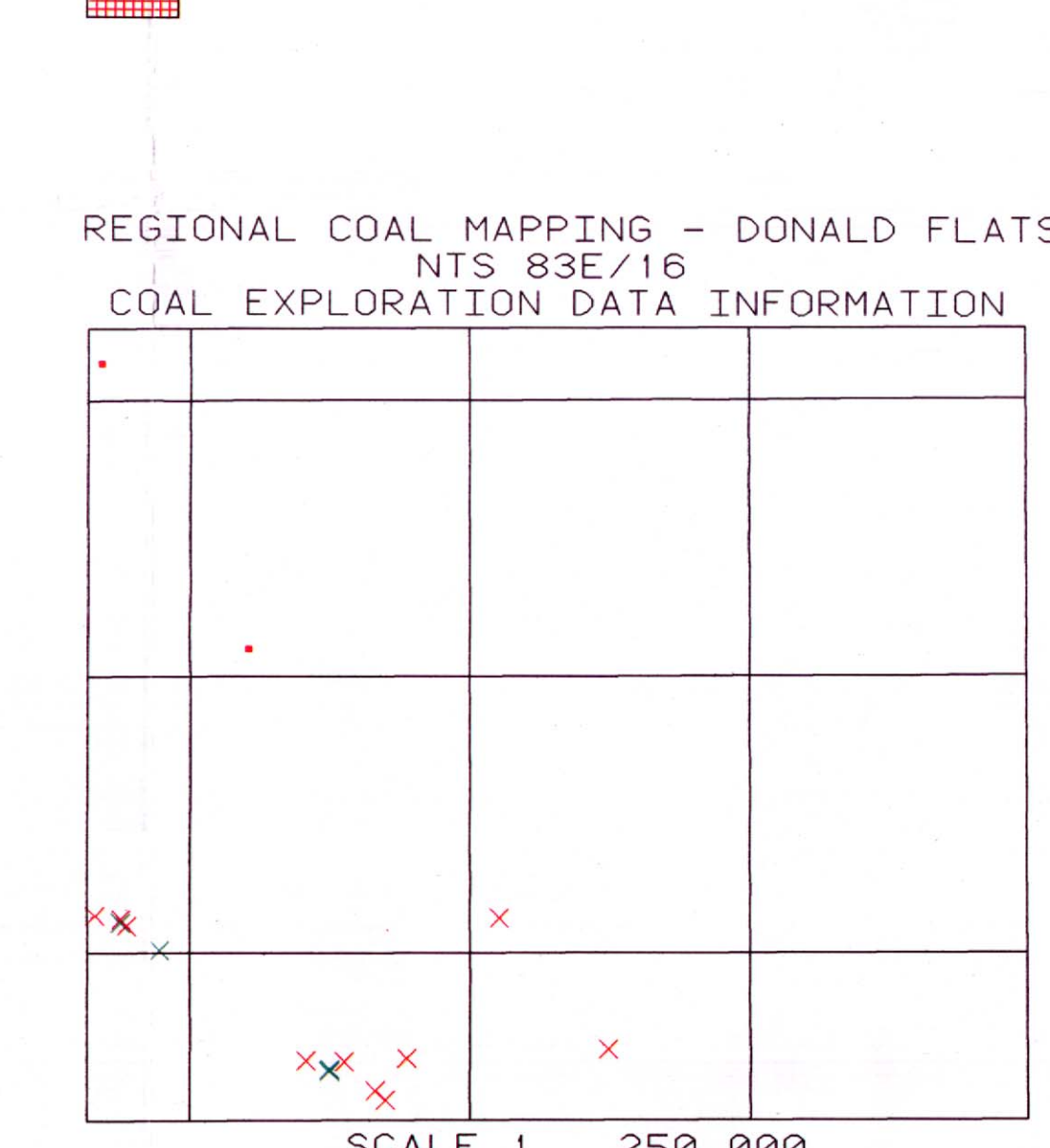
R J H RICHARDSON, W LANGENBERG, D K CHAO, D FIETZ  
SCALE 1 50,000



REGIONAL COAL MAPPING - DONALD FLATS  
NTS 83E/16 COAL DISPOSITIONS

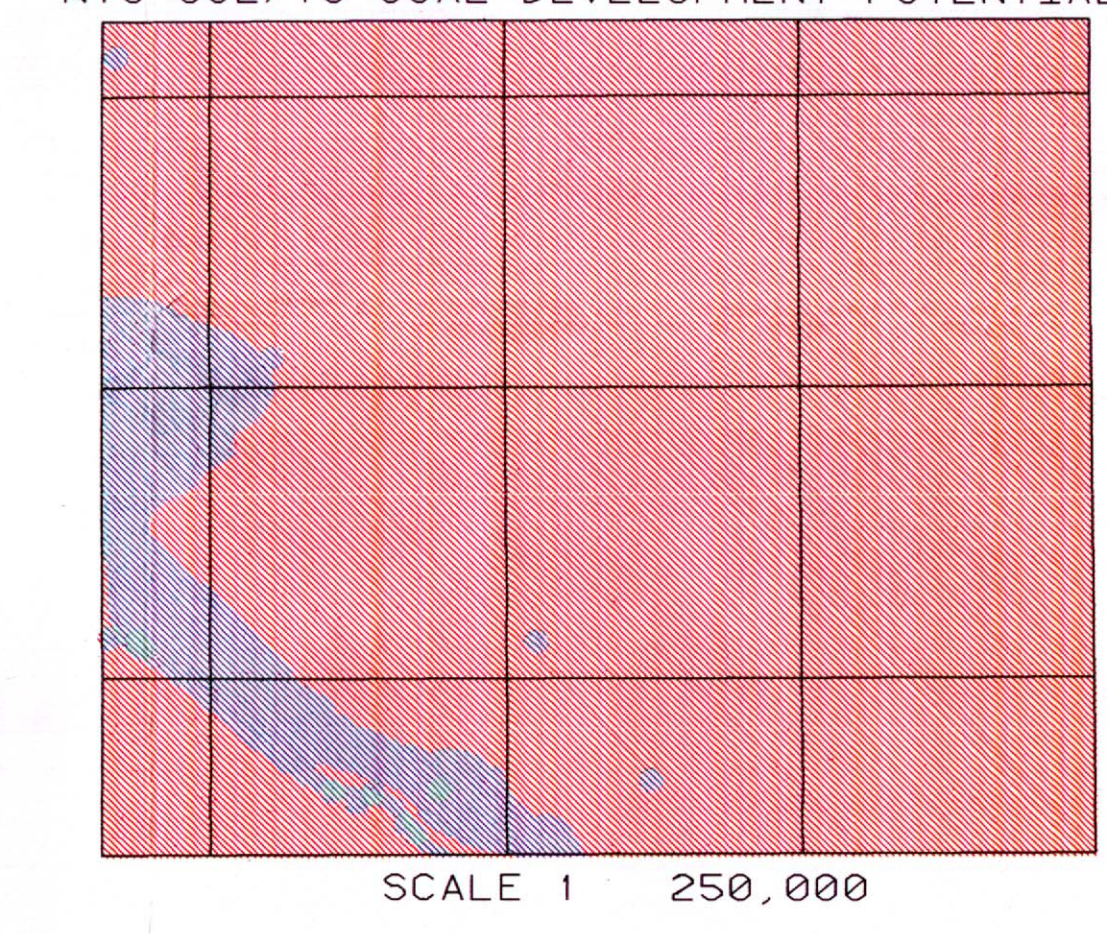


REGIONAL COAL MAPPING - DONALD FLATS  
NTS 83E/16 COAL EXPLORATION DATA INFORMATION



- COAL DRILLHOLE, WITH COAL QUALITY
- COAL DRILLHOLE, NO COAL QUALITY
- ✕ COAL OUTCROP, WITH COAL QUALITY
- ✕ COAL OUTCROP, NO COAL QUALITY

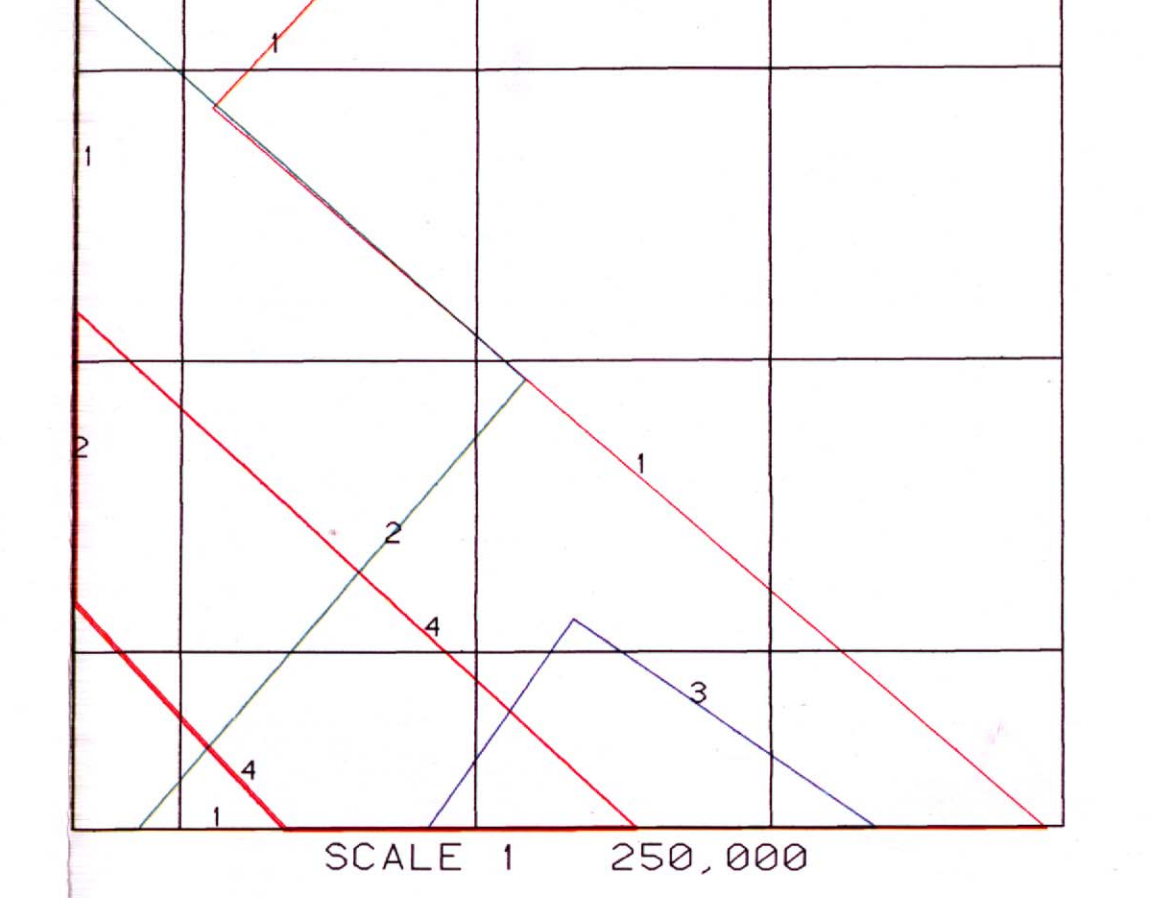
REGIONAL COAL MAPPING - DONALD FLATS  
NTS 83E/16 COAL DEVELOPMENT POTENTIAL\*



- HIGH POTENTIAL
- MEDIUM POTENTIAL
- LOW POTENTIAL
- NO DATA AVAILABLE

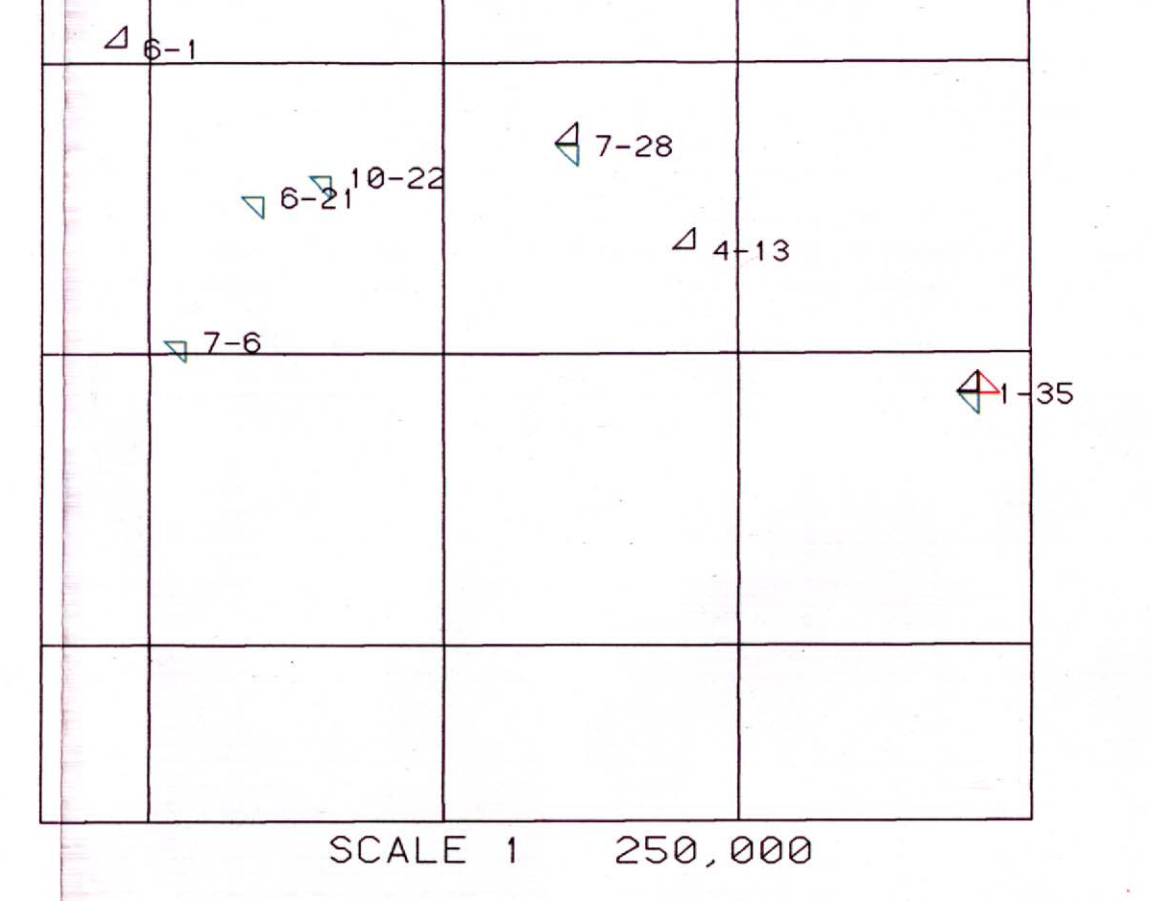
\* NOTE \*  
Coal Development Potential is a semi-quantitative and subjective evaluation of the potential of coal development based on limited data and reflecting current mining technology and general economic conditions. CAUTION SHOULD BE EMPLOYED IN THE USE OF THIS ANALYSIS. The analysis is based on existing geological data and does not take into account government regulations on coal development or evaluate actual economic constraints to development now or in the future. To establish a 'potential map' for a unique set of criteria, please contact the ADS.

REGIONAL COAL MAPPING - DONALD FLATS  
NTS 83E/16 INDEX TO SPECIFIC REFERENCE DOCUMENTS



- INDEX TO SPECIFIC DOCUMENTS for the MAPSHEET NTS 83E/16
1. Blakely, R. C. 1981-82. Map of Sixth Project - Thermal Coal Resource-Geological Evaluation. Based on 1980 Field Mapping Program. Union Oil Company of Canada. 1:25000 Outline identified as 1 on GIS plot.
  2. Woodley, R. H. 1982-83. Map of Sixth Project - Thermal Coal Drift Program-Geological Evaluation. Union Oil Company of Canada Limited. 4 Volume. Outline identified as 2 on GIS plot.
  3. Woodley, R. H. 1979-80. Eighth Project Geological Evaluation. Union Oil Company of Canada Limited - Minerals Department. Report contains detailed regional geological maps. Scale 1:25000. Outline identified as 3 on GIS plot.
  4. Union Oil Company of Canada. 1980-10-08. Map of Sixth Project. ERCB Coal Application No. 888572. From Application from ERCB Records Center. Outline identified as 4 on GIS plot.

REGIONAL COAL MAPPING - DONALD FLATS  
NTS 83E/16 KNOWN COAL INTERSECTIONS FROM OIL & GAS WELL LOGS



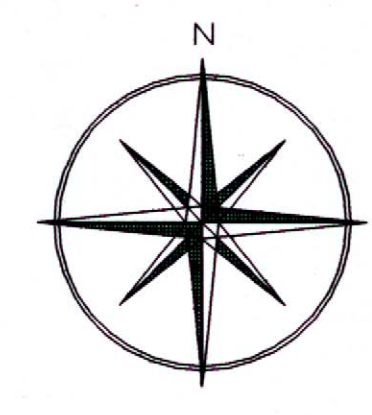
- △ LUSCAR GROUP
- ▽ BRAZEAU FORMATION (CUTBANK COAL MEASURE)
- ◻ COAL VALLEY COAL ZONE (KAKWA COAL MEASURE)

SITID	WELL LOCATION (LSD-SEC)	MEASURE INTERSECTED #1	MEASURE INTERSECTED #2	MEASURE INTERSECTED #3
89473	1-35	478-482m 480-484 538-533m	878-881m	3355-3363 3372-3374m 3418-3423m
90875	4-13			3438-3441m
90876	7-28		844-845m	3475-3477m 3487-3488m 3549-3552m
146830	7-6		688-646m	725-726m
146840	6-21		875-876m 883-884m	891-892m
90877	10-22		1001-1002m	3638-3641m 3658-3660m 3678-3679m 3684-3686m 3753-3755m
92877	6-1			

1 50,000 LEGEND

- ✕ COAL OUTCROP LOCATION
- ◻ COAL ZONE (ASSUMED)
- ▨ PASKAPOD FORMATION
- ▨ COALSPUR MEMBER
- ▨ COAL VALLEY COAL ZONE (KAKWA COAL MEASURE)
- ⊗ ENTRANCE CONGLOMERATE (ASSUMED)
- ▨ BRAZEAU FORMATION
- ▨ BRAZEAU FORMATION COAL ZONE (CUTBANK COAL MEASURE)
- ▨ COAL SEAM
- ⊗ OIL & GAS LOCATION (CAPPED)
- ⊗ OIL & GAS LOCATION (ABANDONED)
- ⊗ OIL & GAS LOCATION (SUSPENDED)
- ⊗ DRILLHOLE, UNION OIL COMPANY OF CANADA LTD (COAL INTERSECTED)
- ⊗ DRILLHOLE, UNION OIL COMPANY OF CANADA LTD (NO COAL INTERSECTED)
- ⊗ (HYDROGEOLOGICAL) DRILLHOLE, ALBERTA RESEARCH COUNCIL (THIN COAL INTERSECTED)
- ▭ ROAD & TRAIL
- ▭ HIGHWAY 40
- ▭ RAILWAY

© ELAD ENTERPRISES INC



ALBERTA RESEARCH COUNCIL MAP RCM9  
IMAGE NAME 83E16p16  
COMPILATION DATE MAY 1991  
REVISION DATE JUNE 10, 1991

RELIABILITY AND USE  
Information contained on this map sheet has been derived from a number of different sources, scales, and dates. It is not intended to be used as a legal document. Every attempt has been made to ensure that the information is accurate and up-to-date. However, the user should verify the information for their specific needs. The user should also consult the most current geological maps and reports for the area. The user should also consult the most current geological maps and reports for the area.

FUNDING  
Funds for this project were provided by the Alberta Department of Energy and the Alberta Research Council.



COAL GEOLOGY SECTION  
ALBERTA GEOLOGICAL SURVEY