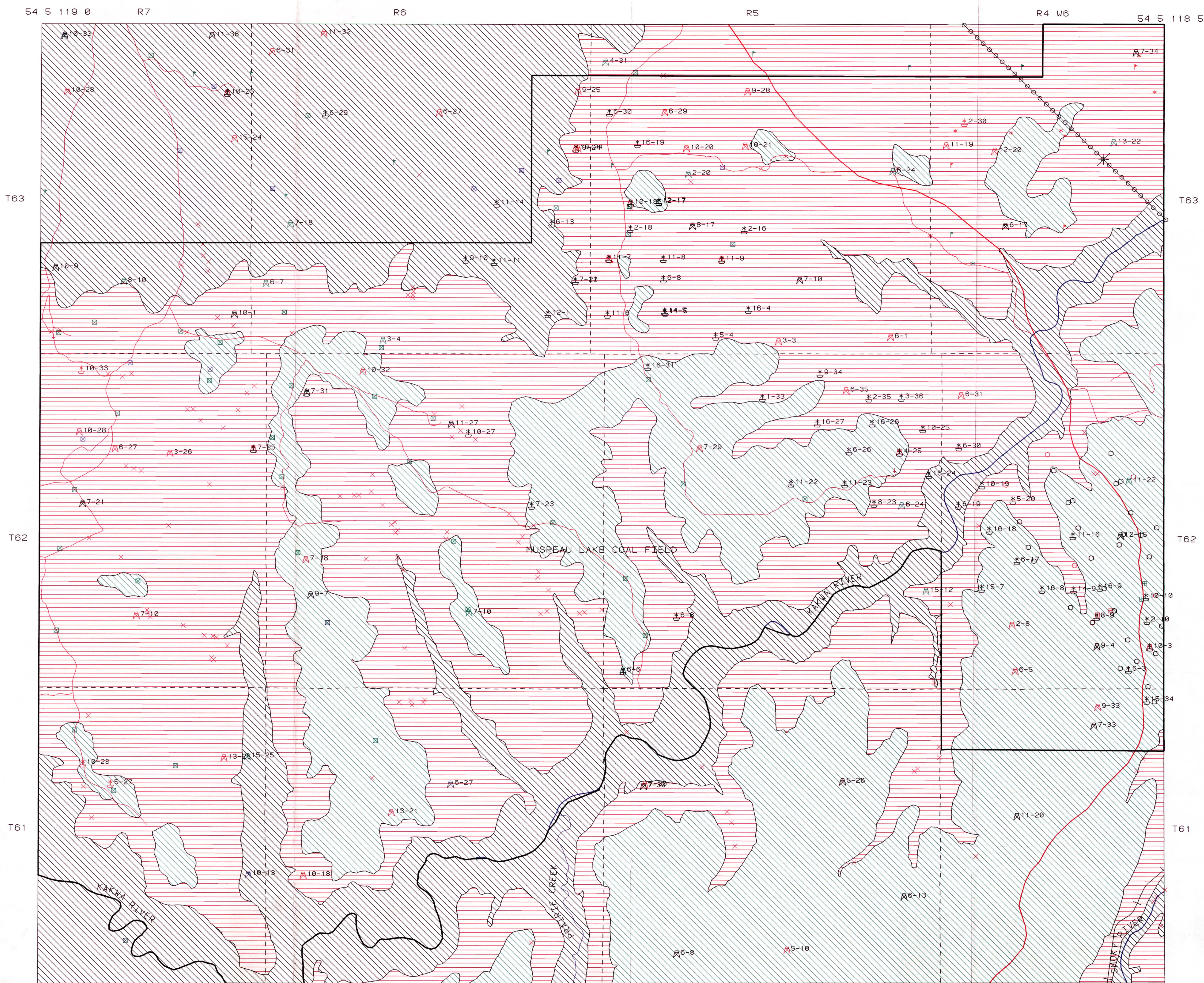


# REGIONAL COAL MAPPING - PRAIRIE CREEK NTS 83L/7

R J H RICHARDSON, W LANGENBERG, D K CHAO, F M DAWSON, D FIETZ

SCALE 1 50,000



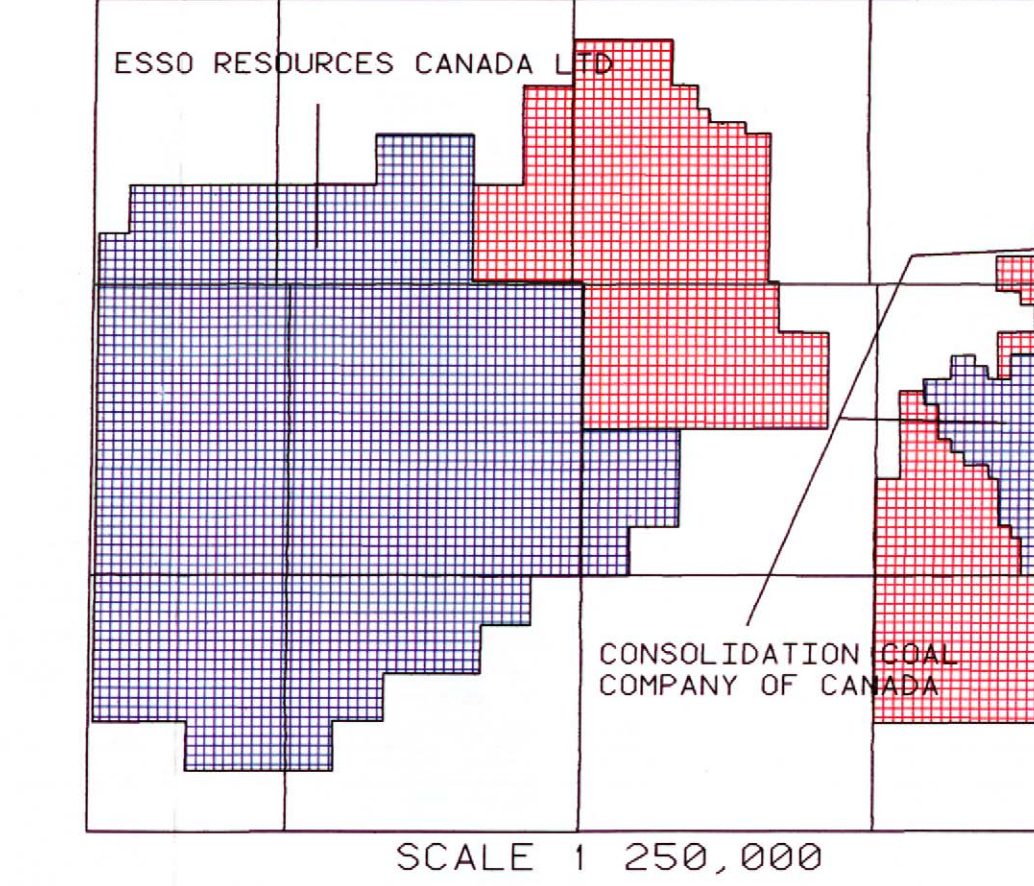
54 25 119 0 R7 R6 R5 R4 W6 54 25 118 5

1 50,000 LEGEND

- |                            |                                |  |   |
|----------------------------|--------------------------------|--|---|
| AXIS OF ALBERTA SYNCLINE   | OIL & GAS LOCATION (ABANDONED) | DRILLHOLE, CONSOLIDATION COAL COMPANY OF CAN (COAL INTERSECTED)    | DRILLHOLE, HURRAY COAL COMPANY (COAL INTERSECTED)               |
| PASKAPOO FORMATION         | OIL & GAS LOCATION (SUSPENDED) | DRILLHOLE, CONSOLIDATION COAL COMPANY OF CAN (NO COAL INTERSECTED) | DRILLHOLE, HURRAY COAL COMPANY (NO COAL INTERSECTED)            |
| COALSPUR FORMATION (UPPER) | OIL & GAS LOCATION (CAPPED)    | DRILLHOLE, ESSO RESOURCES CANADA LIMITED (COAL INTERSECTED)        | DRILLHOLE, ALBERTA RESEARCH COUNCIL (COAL INTERSECTED)          |
| COALSPUR FORMATION (LOWER) | OIL & GAS LOCATION (STANDING)  | DRILLHOLE, ESSO RESOURCES CANADA LIMITED (NO COAL INTERSECTED)     | DRILLHOLE, ALBERTA RESEARCH COUNCIL (NO COAL INTERSECTED)       |
| COAL OUTCROP               | OIL & GAS LOCATION (FLOWING)   | DRILLHOLE, C WARREN HUNT EXPLORATIONS LTD (COAL INTERSECTED)       | DRILLHOLE, C WARREN HUNT EXPLORATIONS LTD (NO COAL INTERSECTED) |
| COAL TRENCH                | OIL & GAS LOCATION (PUMPING)   | ERCB MUSREAU LAKE COAL FIELD OUTLINE                               |   |

INSTITUTE OF SEDIMENTARY AND PETROLEUM GEOLOGY  
ELAD ENTERPRISES INC

## REGIONAL COAL MAPPING - PRAIRIE CREEK NTS 83L/7 COAL DISPOSITIONS



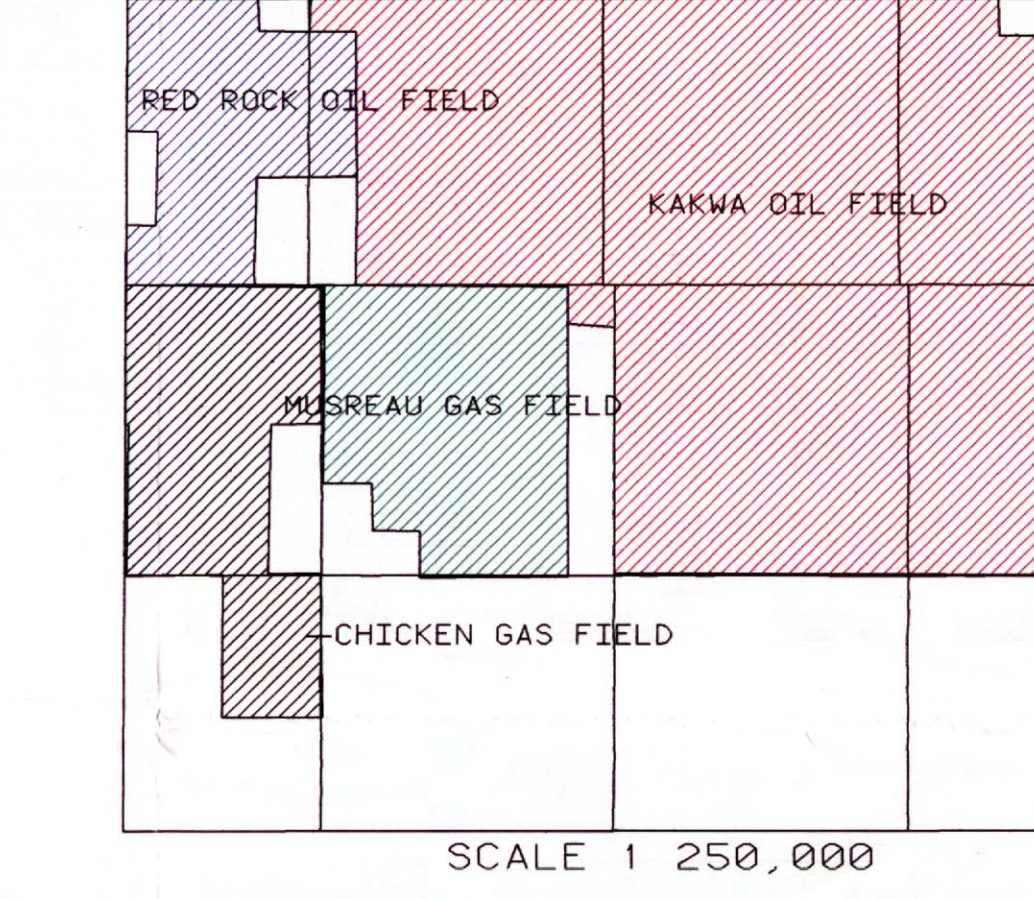
- COAL LEASE
- COAL LEASE APPLICATION

## REGIONAL COAL MAPPING - PRAIRIE CREEK INDEX TO SPECIFIC REFERENCE DOCUMENTS



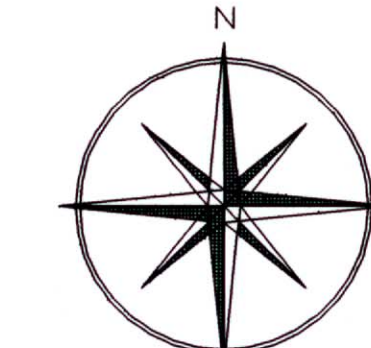
INDEX TO SPECIFIC REFERENCE DOCUMENTS FOR THE MAPSHEET NTS 83L/7  
 1. Blomquist, D. S. 1981-81. West of South Project - Thermal Coal Acquirement Geological Evaluation Based on 1988 Field Mapping Program. Union Oil Company of Canada Limited, 4 Volume. Report contains detailed regional geological maps at scale 1:25,000. Outline identified on 1 on GIS plot.  
 2. Goffey, M. A. 1983-83. West of South Project - 1981 Thermal Coal Acquirement Program - Geological Evaluation. Union Oil Company of Canada Limited, 3 Volume. Outline identified on 1 on GIS plot.  
 3. Esso Resources Canada Limited. 1989-91. River Basin Resource Area Raw Data and Mapping Data Completion - NTS 83L. Cooperation includes numerous maps at scales of 1:250,000 and 1:50,000. Outline identified on 1 on GIS plot.  
 4. McPherson, M. E. & Dawson, F. M. Geological Compilation - West of Area (83L). Geological Survey of Canada, Open File Report 2913. Scale 1:125,000. Outline identified on 4 on GIS plot.

## REGIONAL COAL MAPPING - PRAIRIE CREEK NTS 83L/7 ERCB OIL & GAS FIELD OUTLINE



- ERCB CHICKEN GAS FIELD
- ERCB KAKWA OIL FIELD
- ERCB MUSREAU GAS FIELD
- ERCB RED ROCK OIL FIELD

- HWY 40
- ROAD OR TRAIL
- RIVER
- RAILWAY

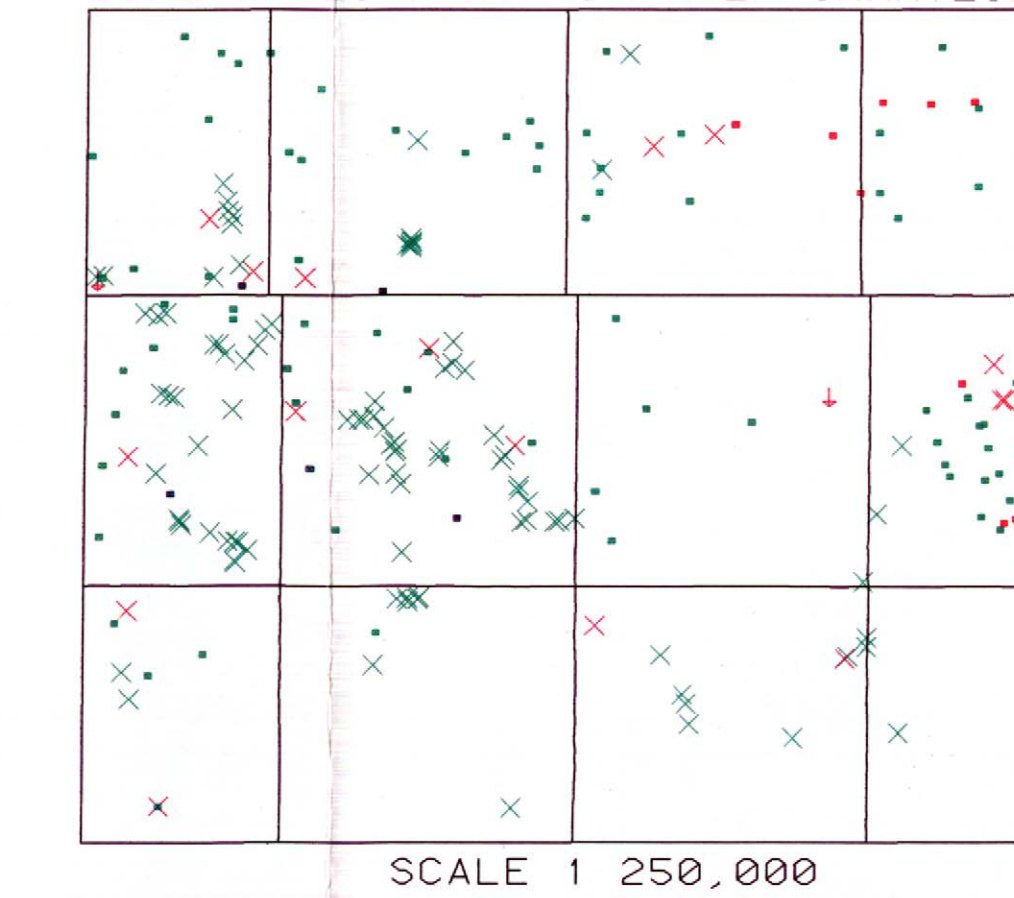


ALBERTA RESEARCH COUNCIL MAP RCM7  
 IMAGE NAME 83L7p1t  
 COMPILATION DATE MARCH, 1991  
 REVISION DATE MAY 15, 1991

RELIABILITY AND USE  
 Information contained on this map sheet has been derived from a number of different sources, maps, and reports (digital and hard copy). Every attempt has been made to accurately portray the data. However, there may be instances where the data is not accurate. For more specific information, please contact the Head, Coal Geology Section, Alberta Geological Survey, Alberta Research Council, P.O. Box 8330, Station F, Edmonton, Alberta, T6C 5K2.

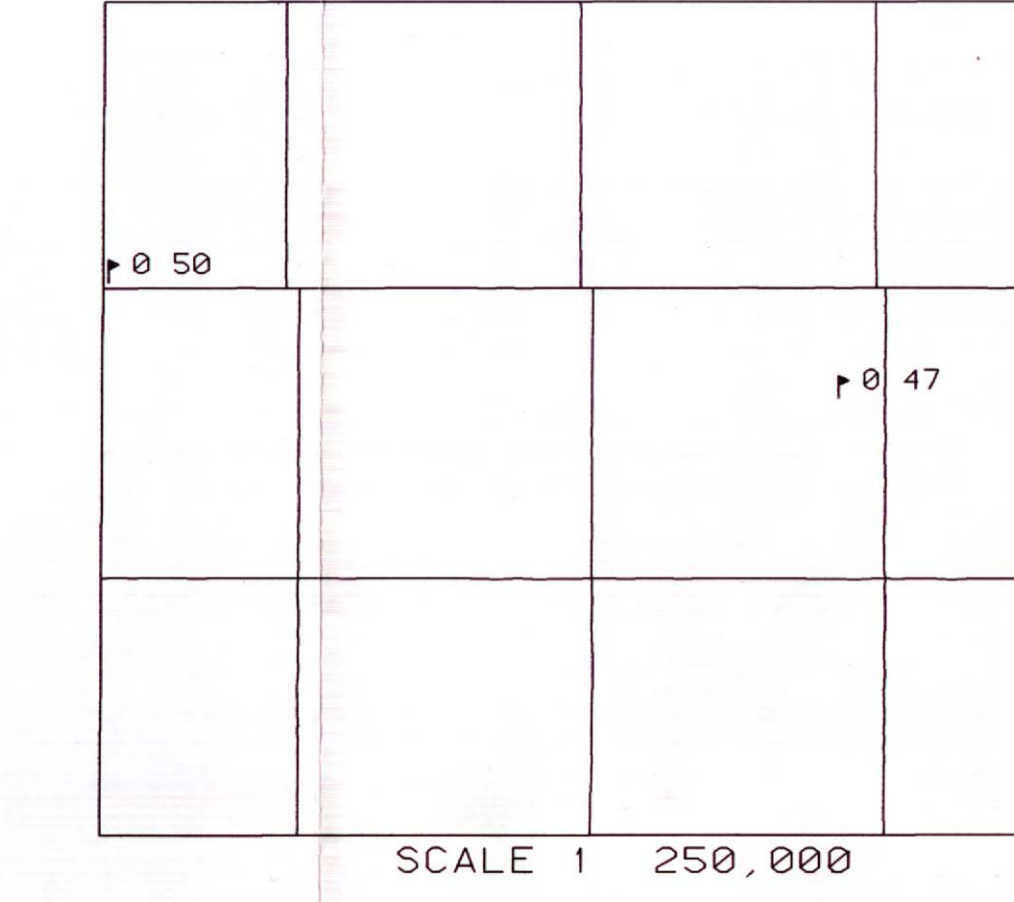
FUNDING  
 Funds for this project have been provided by the Alberta Department of Energy and the Alberta Research Council.

## REGIONAL COAL MAPPING - PRAIRIE CREEK NTS 83L/7 COAL EXPLORATION DATA INFORMATION



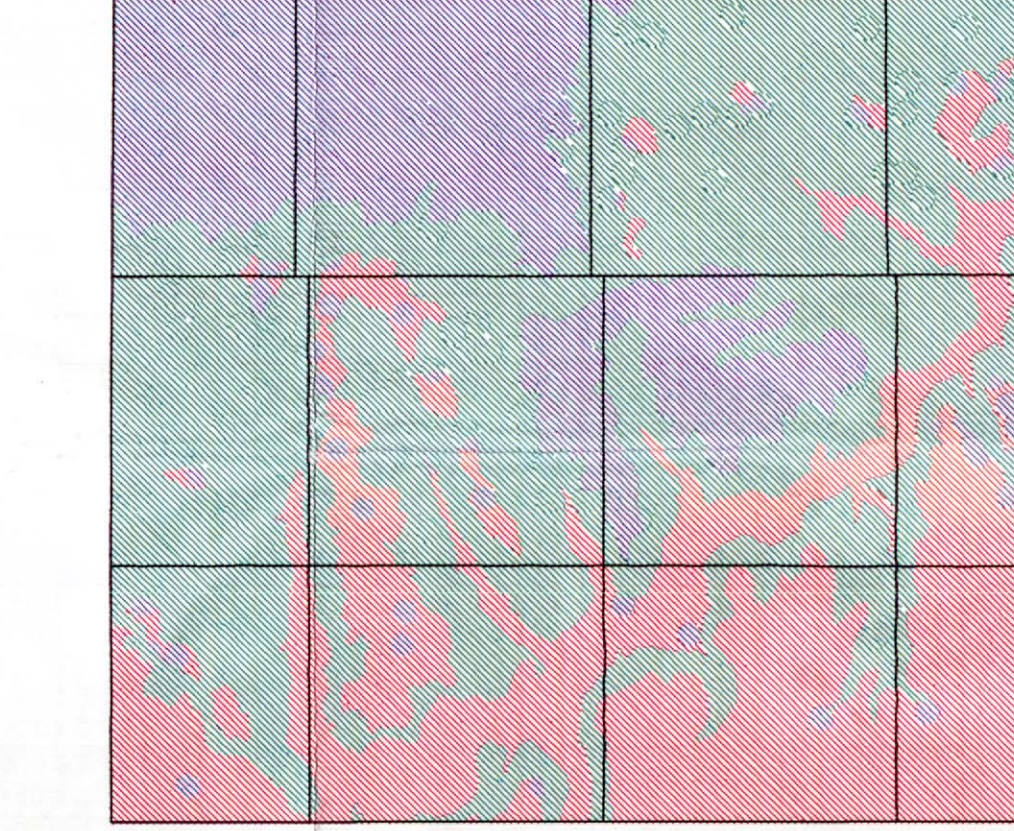
- COAL DRILLHOLE, WITH COAL QUALITY
- COAL DRILLHOLE, NO COAL QUALITY
- COAL OUTCROP, WITH COAL QUALITY
- COAL OUTCROP, NO COAL QUALITY
- COAL TRENCH, WITH COAL QUALITY

## REGIONAL COAL MAPPING - PRAIRIE CREEK RANDOM VITRINITE REFLECTANCE (%) OF COAL TRENCHES



- RANDOM VITRINITE REFLECTANCE (% OF COAL TRENCHES)

## REGIONAL COAL MAPPING - PRAIRIE CREEK NTS 83L/7 COAL DEVELOPMENT POTENTIAL



- HIGH POTENTIAL
- MEDIUM POTENTIAL
- LOW POTENTIAL
- NO DATA AVAILABLE

\* NOTE \*  
 Coal Development Potential is a semi-quantitative and subjective evaluation of the potential of coal development based on limited data and reflecting current mining technology and geologic knowledge. CAUTION SHOULD BE OBSERVED IN THE USE OF THIS ANALYSIS! The analysis is based on many geological criteria and does not take into account governmental restrictions on coal development or evaluate actual economic constraints to development now or in the future. To establish a "potential map" for a unique set of criteria, please contact the AGS.



COAL GEOLOGY SECTION  
ALBERTA GEOLOGICAL SURVEY