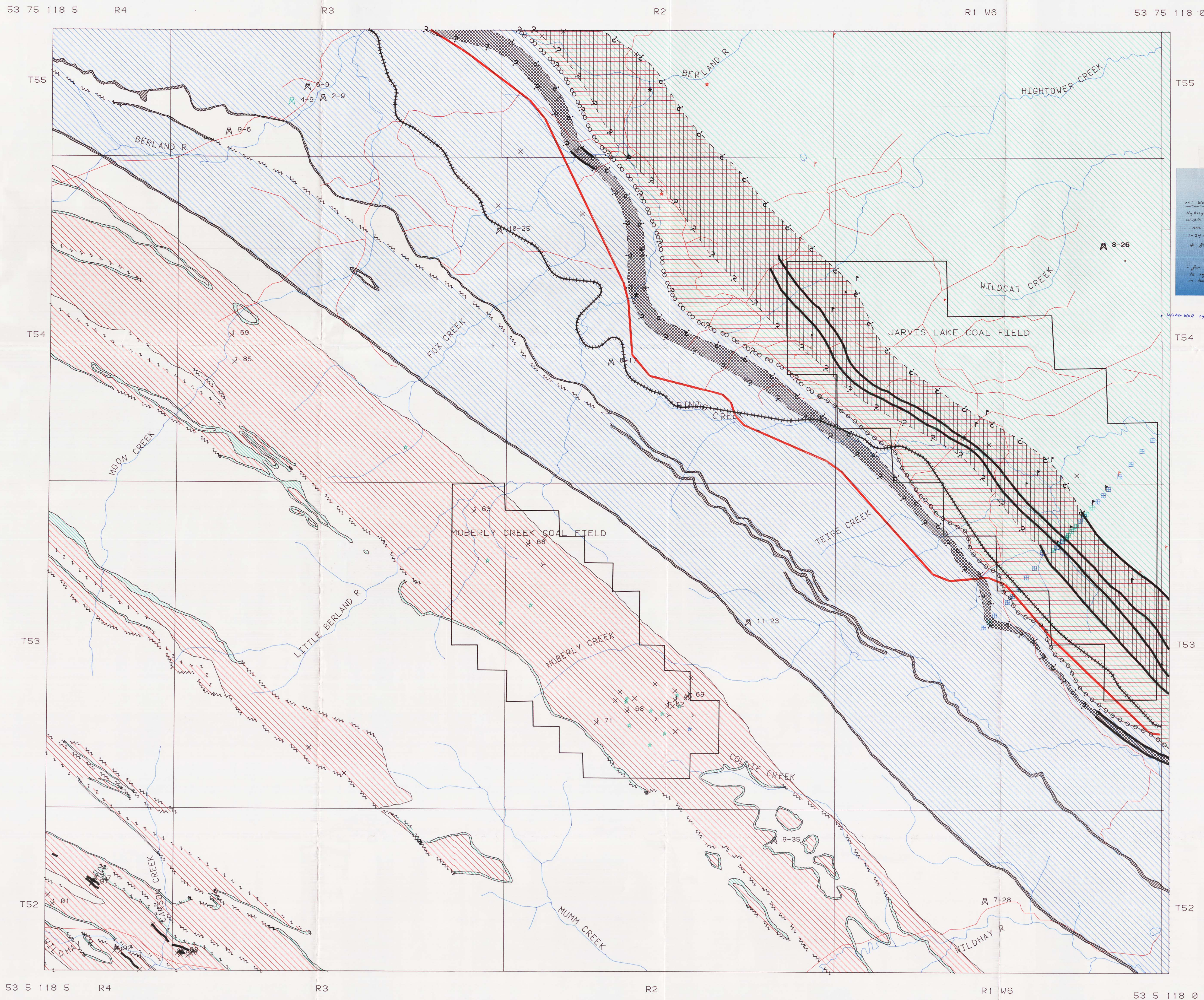


REGIONAL COAL MAPPING - MOBERLY CREEK NTS 83E/9

R J H RICHARDSON, W LANGENBERG, D K CHAO, D FIETZ

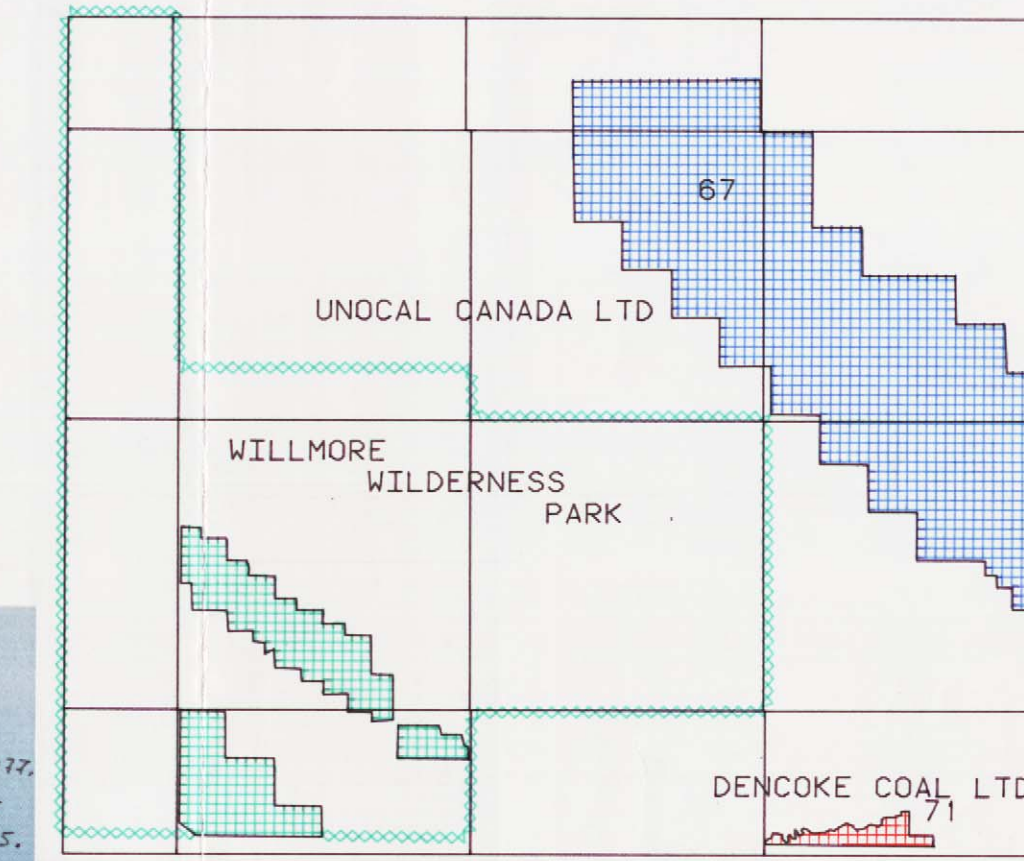
SCALE 1 50,000



1 50,000 LEGEND

- | | | | |
|--|--|--|--|
| | | | |
| | | | |
| | | | |
| | | | |
| | | | |
| | | | |
| | | | |

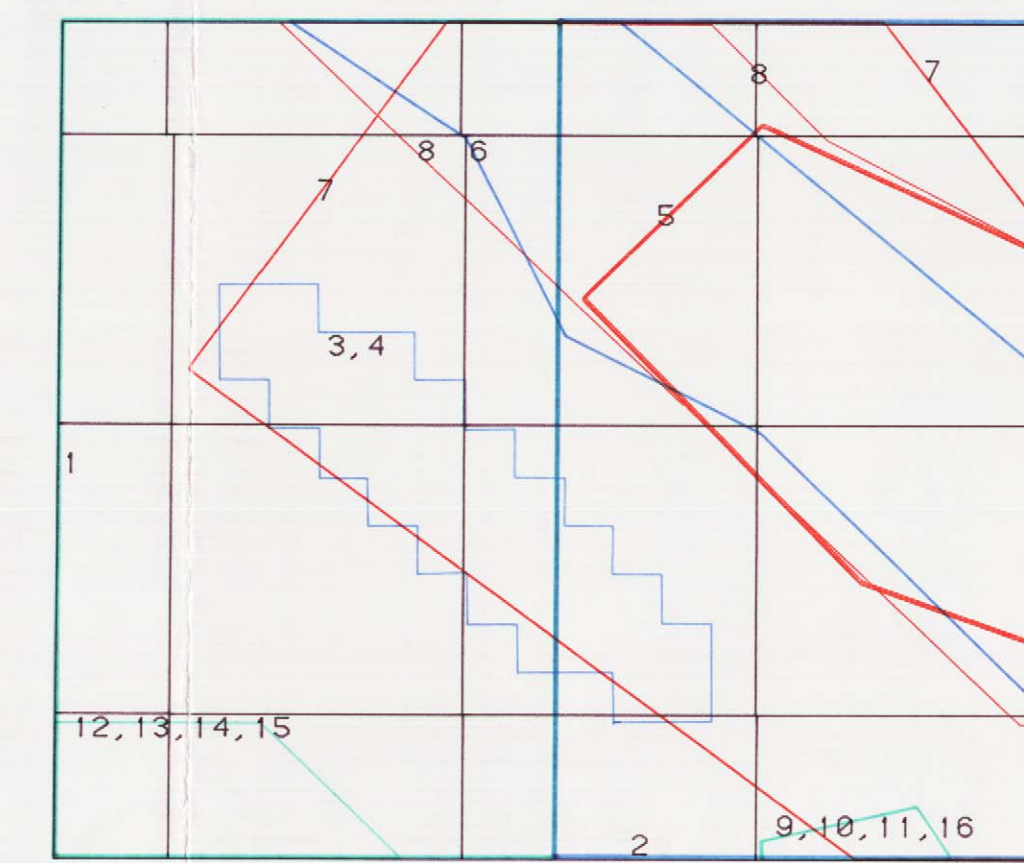
REGIONAL COAL MAPPING - MOBERLY CREEK NTS 83E/9 COAL DISPOSITIONS



SCALE 1 250,000

- COAL LEASE APPLICATION
- COAL LEASE APPLICATION
- COAL LEASE, AREA WITH REGISTERED RIGHT OF 1ST REFUSAL

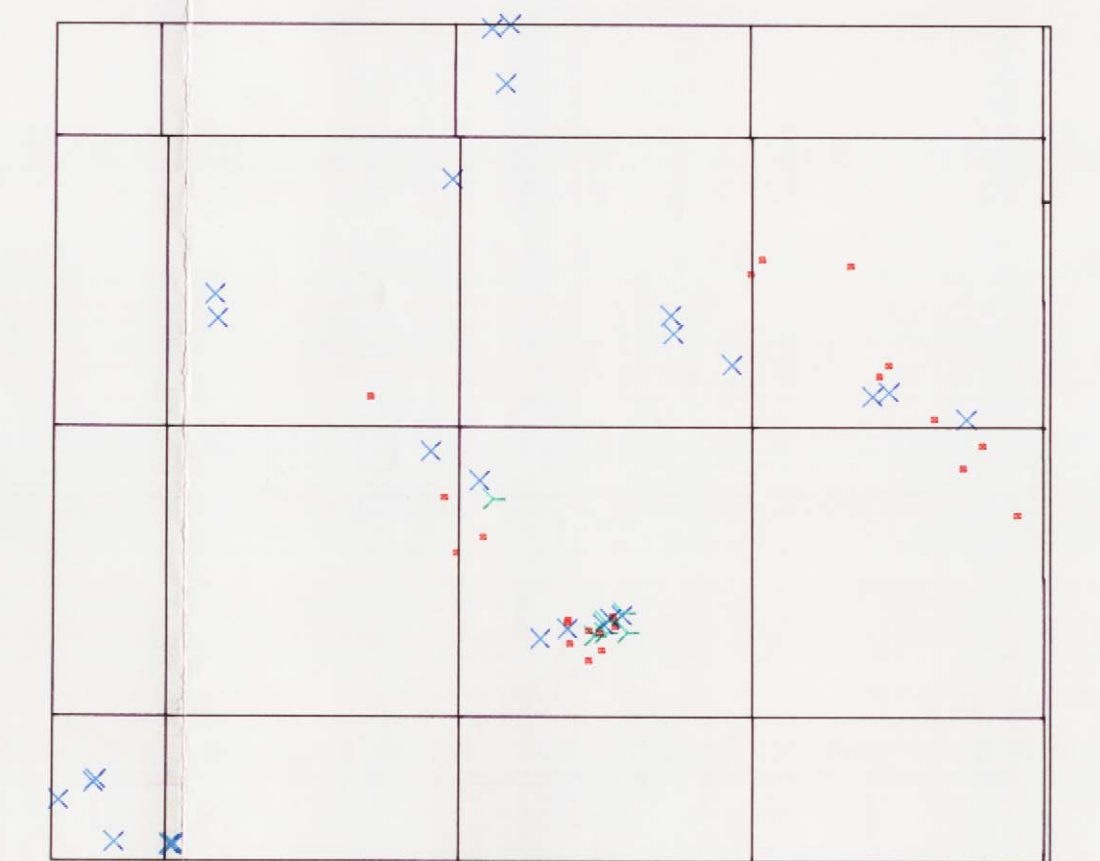
REGIONAL COAL MAPPING - MOBERLY CREEK NTS 83E/9 INDEX TO SPECIFIC REFERENCE DOCUMENTS



SCALE 1 250,000

- INDEX TO SPECIFIC REFERENCE DOCUMENTS FOR THE MAPSHEET NTS 83E/9
- Irish, E J W. Moberly Creek mapsheet. Geological Survey of Canada Map 9654 Scale 1:63500. Outline identified as 1 on G15 plot.
 - Long, A H. 1949. Moberly Creek mapsheet. Geological Survey of Canada Map 9634. Scale 1:63500. Outline identified as 2 on G15 plot.
 - Bertrand, J J. 1978-87-26. Technical Report on Little Berland River (2 volumes). McIntyre Mines Ltd. Report initially filed with Alberta Energy and now resides at the ERCB Library (Calgary). Report contains geological maps of approximate scale 1:10000.
 - geological sections of approximate scale 1:10000.
 - Outline identified as 3 on G15 plot.
 - Outline identified as 4 on G15 plot.
 - Horgan, J. Entrance/Fox Creek Evaluation 1985-87. ESSO Canada Resources Limited - Coal Division, contains 1:25000 topographic map showing lines of rock outcrop. Outline identified as 5 on G15 plot.
 - Union Oil Company of Canada. 1988-10-28. West of St. Albans Project. ERCB Coal Application No. 88822. File Application Form. 25000 Resource Definition Outline identified as 6 on G15 plot.
 - Hoadley, H. 1979-80. Sturgeon Project Geological Evaluation. Union Oil Company of Canada Limited - Minerals Department. Report containing detailed regional geological maps. Scale 1:25000. Outline identified as 7 on G15 plot.
 - Blaney, R S. 1981-81. West of Sixth Project - Thermal Coal Acquirement Geological Evaluation Based on 1981 Field Mapping Program. Union Oil Company of Canada Limited - Coal Division. Report containing detailed regional geological maps. Scale 1:25000. Outline identified as 8 on G15 plot.
 - Dencoke Coal Limited - Denison Mines Limited. 1983-84-28. Coal Exploration Application for Wilby. 1983 Project. ERCB Application No. 83079. File of Application from ERCB Records Center. Application contains geological maps. Outline identified as 9 on G15 plot.
 - Denison Mines Limited. 1982-85-26. Coal Exploration Application for the Wilby Area. ERCB Application No. 83224. File of Application from ERCB Records Center. Outline identified as 10 on G15 plot.
 - Dencoke Coal Limited - Denison Mines Limited. 1984-84. Wilby Project Geological Report. Report contains 25000 geological maps. Outline identified as 11 on G15 plot.
 - Denison Mines Limited. 1974-83. Rocky Lake Summary. Outline identified as 12 on G15 plot.
 - Denison Mines Limited. 1974-83. Rocky Lake Summary. Outline identified as 13 on G15 plot.
 - Moyle, A C. 1971-10. Rocky Lake Project Interim report. Prepared for Denison Mines Limited. Outline identified as 14 on G15 plot.
 - McIntyre, J P. 1978-82. Report on Coal Exploration - Rocky Lake Area. Denison Mines Limited. Outline identified as 15 on G15 plot.
 - Denison Mines Limited - Denison Mines Limited. 1982-83. Data Summary for the Wilby Property. Outline identified as 16 on G15 plot.
- Industry cooperation and support exemplified by sharing of knowledge unpublished corporate reports on loan to the Alberta Geological Survey.

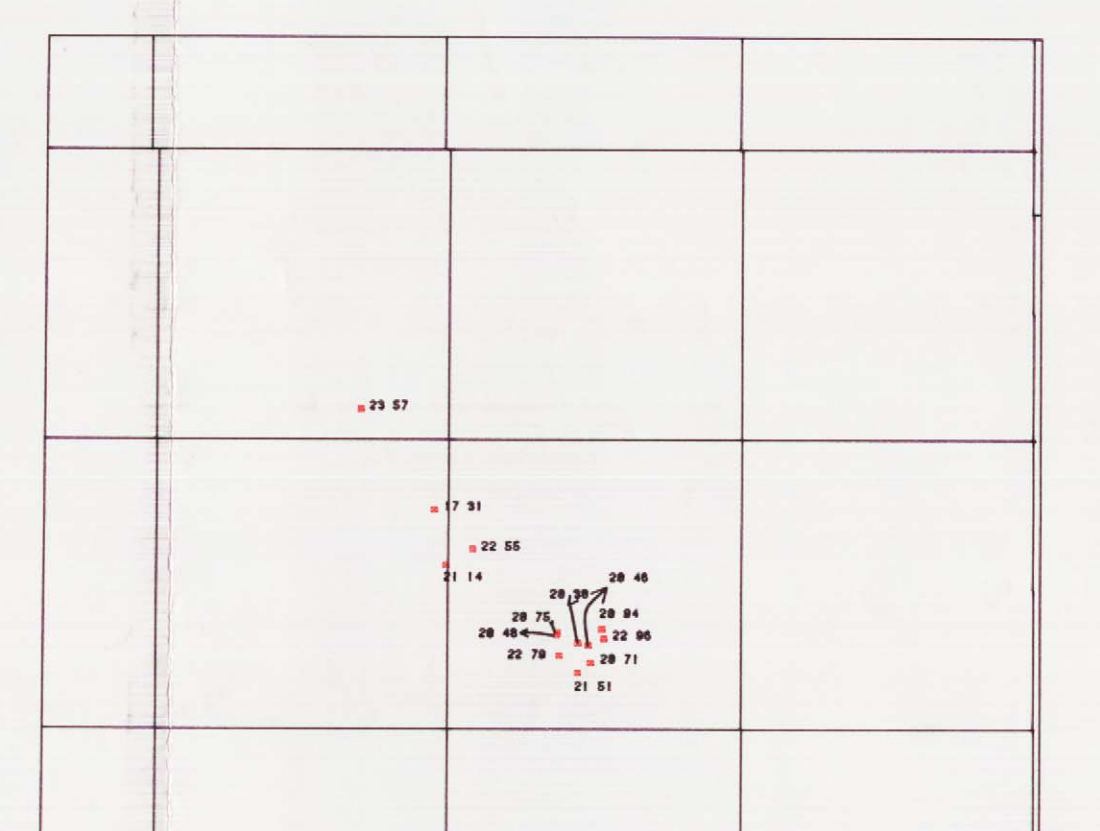
REGIONAL COAL MAPPING - MOBERLY CREEK NTS 83E/9 COAL QUALITY INFORMATION



SCALE 1 250,000

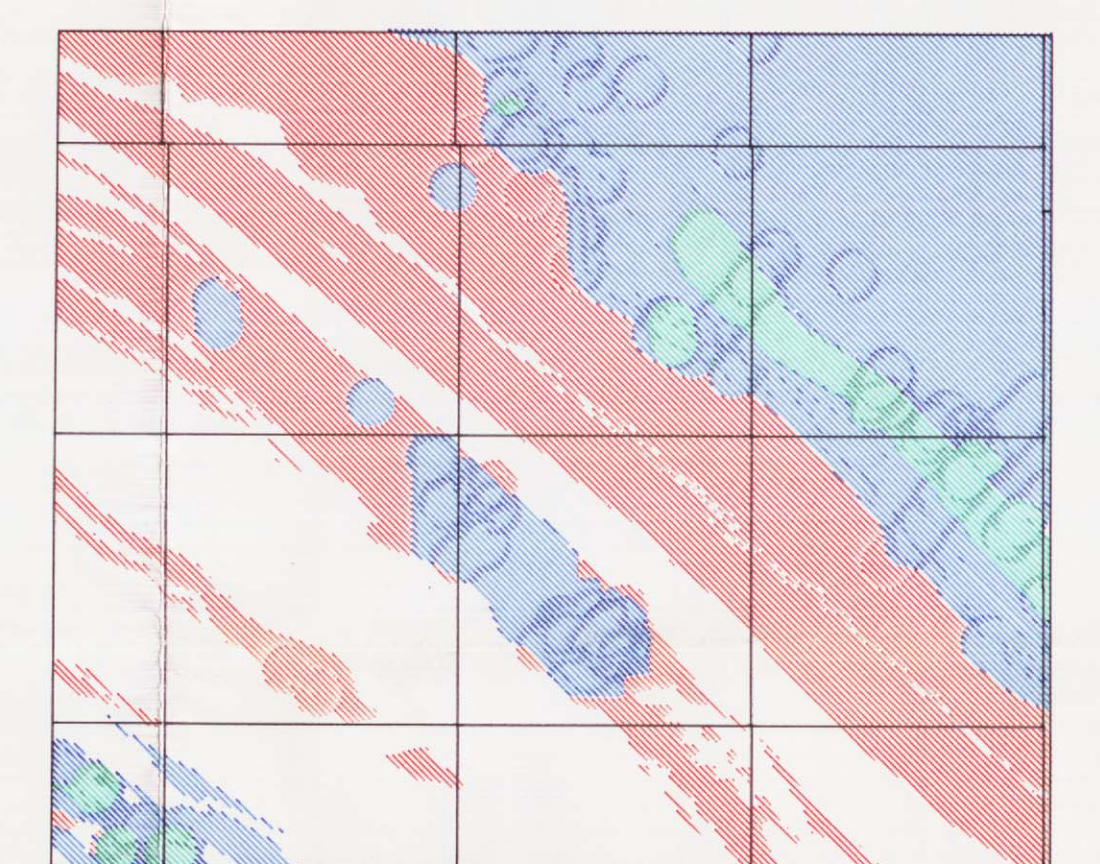
- COAL DRILLHOLE
- ADIT
- COAL OUTCROP

REGIONAL COAL MAPPING - MOBERLY CREEK NTS 83E/9 WEIGHTED AVERAGE VOLATILE MATTER (WAVM) OF COAL DRILLHOLES



SCALE 1 250,000

REGIONAL COAL MAPPING - MOBERLY CREEK NTS 83/9 COAL DEVELOPMENT POTENTIAL*



SCALE 1 250,000

- HIGH POTENTIAL
 - MEDIUM POTENTIAL
 - LOW POTENTIAL
 - NO DATA AVAILABLE
- * Coal Development Potential is a quantitative and subjective evaluation of the potential of coal development based on limited data.

COMPILATION JANUARY 1990
IMAGE NAME GEOPLOT1
DATE FEBRUARY 23, 1990
ALBERTA RESEARCH MAP RCM1

RELIABILITY AND USE
Information contained on this map sheet has been derived from a large number of different sources, scales, and formats (aerial and hard copy). Every attempt has been made to accurately portray the data, however, this map is intended to provide a basic orientation and overview of Coal Resources. For more specific information needs, please contact the nearest Coal Geology Section, Alberta Geological Survey, Alberta Research Council, P O Box 6250, Station F, Edmonton, Alberta.

FUNDING
Funds for this project have been provided by The Alberta Office of Coal Research and Technology, Alberta Energy and by The Alberta Research Council.

ALBERTA RESEARCH COUNCIL

COAL GEOLOGY SECTION
ALBERTA GEOLOGICAL SURVEY