

**FEATURES LEGEND**

Site investigated	△
Drillhole	○
Deposit Type	GRAVEL, sandy GRAVEL, gravelly SAND, SAND
clean	[Red, Orange, Green, Blue swatches]
dirty/very dirty	[Pink, Yellow, Light Green, Cyan swatches]
unknown	[Light Blue, Light Green, Light Blue swatches]
UNKNOWN deposit type	[Grey swatch]

**Deposit Type Definitions:**

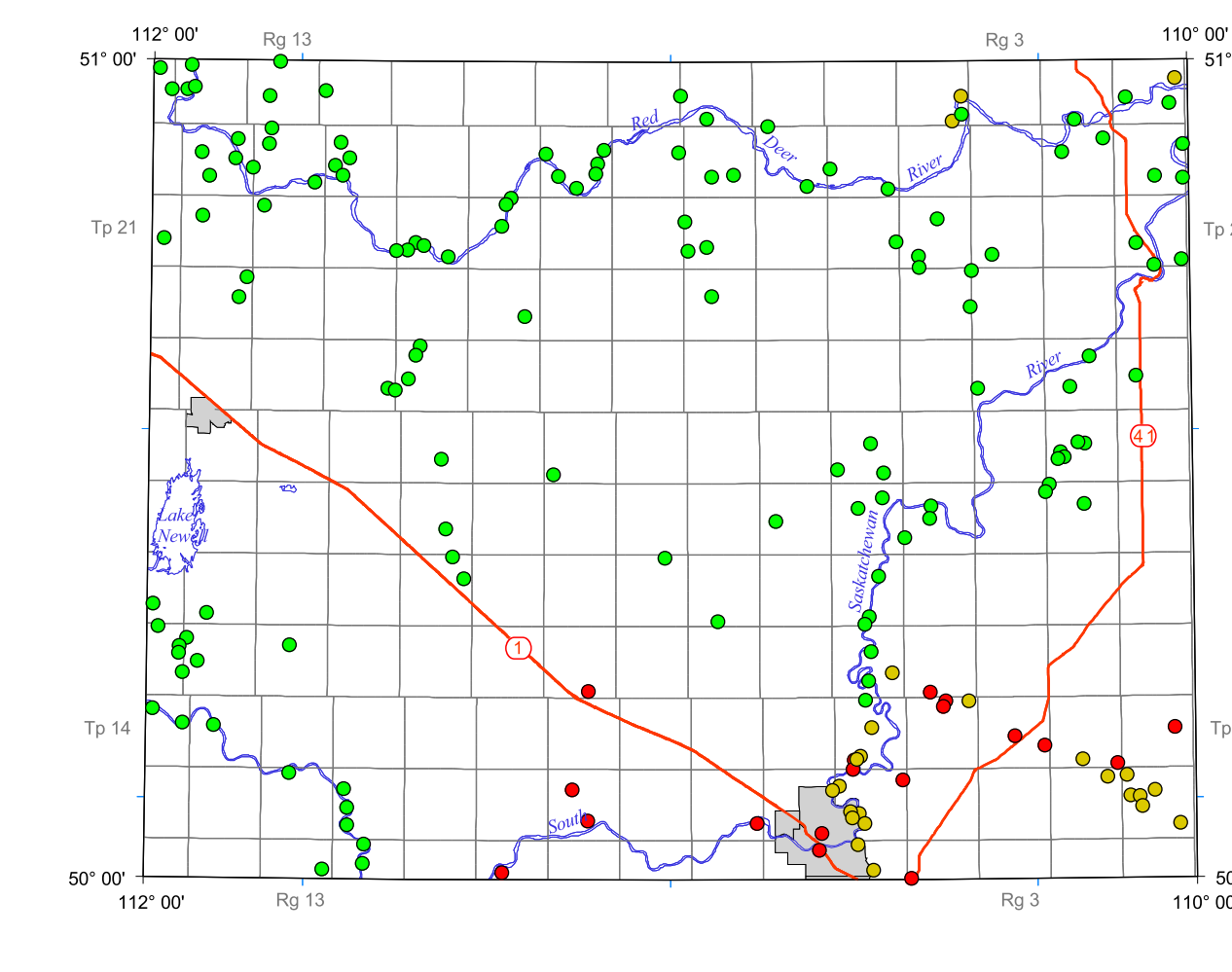
GRAVEL deposit: contains greater than 75% gravel.  
 sandy GRAVEL deposit: contains 50% to 75% gravel.  
 gravelly SAND deposit: contains 25% to 50% gravel.  
 SAND deposit: contains less than 25% gravel.  
 UNKNOWN deposit: amount of gravel unknown.  
 clean deposit: contains less than 3% silt and clay.  
 dirty deposit: contains 3% to 10% silt and clay.  
 very dirty deposit: contains greater than 10% silt and clay.  
 unknown: contains unknown percentage of mixed silt and clay.

**BASE MAP LEGEND**

River and lake	[Blue line]
River - intermittent	[Dashed blue line]
Road - paved	[Red line]
Road - gravel	[Orange line]
Road - unimproved	[Yellow line]
Railway line	[Black line with cross-ticks]
Trail	[Dotted black line]
Park boundary - provincial/national	[Green dashed line]
City/town	[Grey area]
Métis settlement	[Purple area]
Indian reserve	[Red area]
Township/range - surveyed	[Red dashed line]
Township/range - unsurveyed	[Black dashed line]
UTM, zone 12 grid	[Blue crosshair]

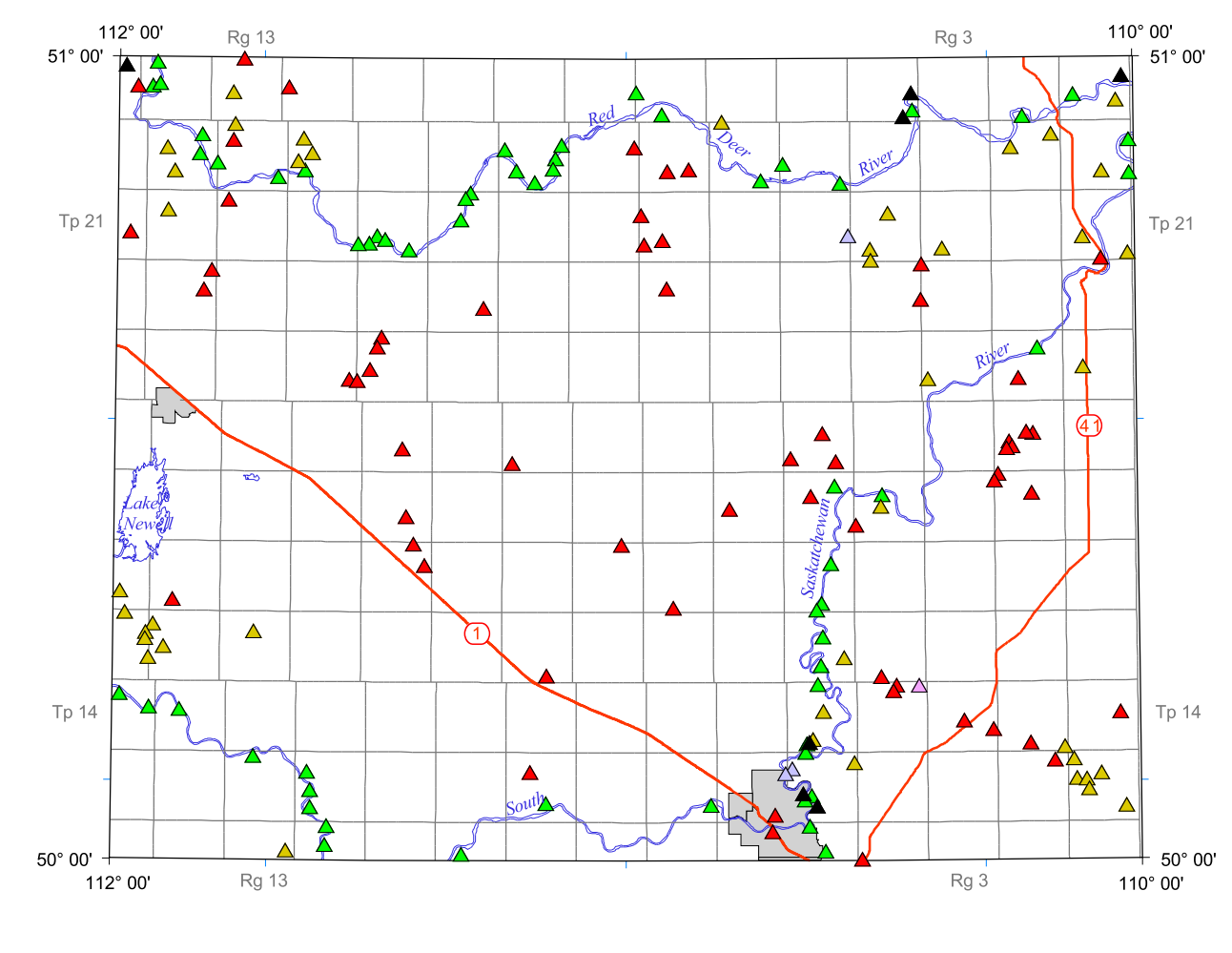
This is a common map legend. Not all units may be present on this map.

**Study Level**



● Level 1 ● Level 2 ● Level 3 ● Level 4 ● Level 5

**Genesis or Geological Feature**



▲ Preglacial ▲ Alluvial ▲ Glacial ▲ Unknown  
 ▲ Glacioluvial ▲ Eolian

**Study Level Definitions:**

Level 1 Aggregate reserves confirmed by grid testing and sampling.  
 Level 2 Aggregate reserves confirmed by multiple test holes and sampling.  
 Level 3 Sand and/or gravel confirmed by Alberta Geological Survey site investigation and limited sampling and testing.  
 Level 4 Sand and/or gravel areas assumed by Alberta Geological Survey investigation of associated sites, remote sensing and other sources of information.  
 Level 5 Potential sand and/or gravel areas identified from remote sensing and other sources of information without Alberta Geological Survey site investigation.

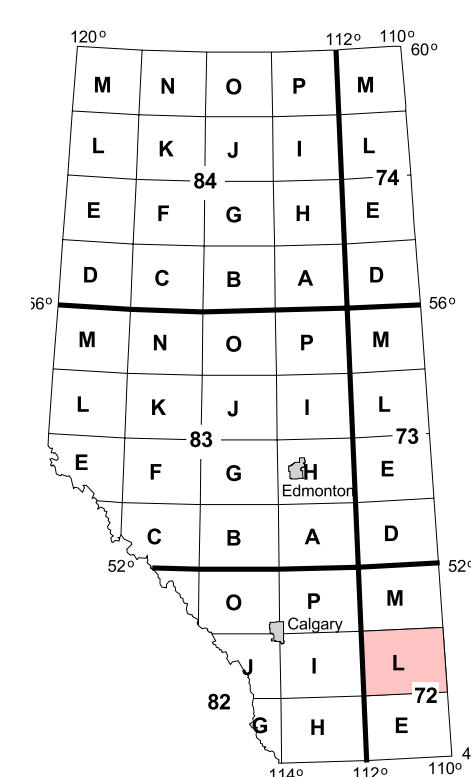
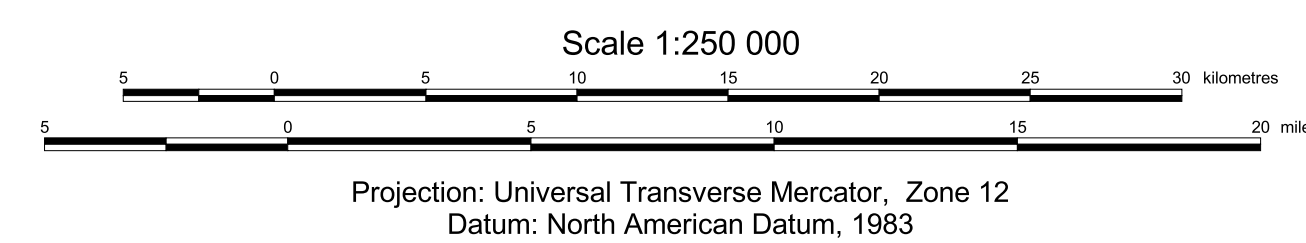
**References:**

Edwards, W.A.D. (1981): Aggregate resources of the Suffield map area, NTS 72L/03; Alberta Research Council, Map A72L03, scale 1:50 000.  
 Edwards, W.A.D. and Scafe, D. (1996): Mapping and resource evaluation of the Tertiary and preglacial sand and gravel formations of Alberta; Alberta Energy and Utilities Board, EUB/AGS, OFR 1994-06, 241 p.  
 Edwards, W.A.D., Fox, J.C. and Richardson, R.H. (1981): Aggregate resources of the Medicine Hat map area, NTS 72L/02; Alberta Research Council, Map A72L02, scale 1:50 000.  
 Fox, J.C. (1981): Aggregate resources of the Many Island Lake map area, NTS 72L/01; Alberta Research Council, Map A72L01, scale 1:50 000.  
 Hudson, B. (1984): Aggregate resources of the Medicine Hat map area, NTS 72L; Alberta Research Council, Map A72L, scale 1:250 000.  
 Richardson, R.J.H. (1981): Aggregate resources of the Seven Persons map area, NTS 72E/15; Alberta Research Council, Map A72E15, scale 1:50 000.  
 Sham, P. (1981): Aggregate resources of the Bow Island map area, NTS 72E/14; Alberta Research Council, Map A72E14, scale 1:50 000.

Published 2004  
 Copies of this map may be obtained from:  
 Information Sales  
 Alberta Geological Survey  
 Telephone: (780) 422-3767  
 Web site: www.ags.gov.ab.ca

**Map 297**  
**Sand and Gravel Deposits with Aggregate Potential, Medicine Hat, Alberta (NTS 72L)**

Geology compiled by: W.A.D. Edwards, H.D. Budney, T. Berezniuk and L. Butkovic



**Acknowledgement:**  
 GIS/Database/ Cartography by:  
 M.C. Price, D.K. Chao, B.E. Schmidke (Livingstone Geological Services),  
 Z.A. Amer and N.L. Blundon

Digital base map provided by:  
 Spatial Data Warehouse

**Disclaimer:**

The Alberta Geological Survey and its employees and contractors make no warranty, guarantee or representation, express or implied, or assume any legal liability regarding the correctness, accuracy, completeness, or reliability of this publication. When using information from this publication in other publications or presentations, due acknowledgement should be given to the Alberta Energy and Utilities Board/Alberta Geological Survey.