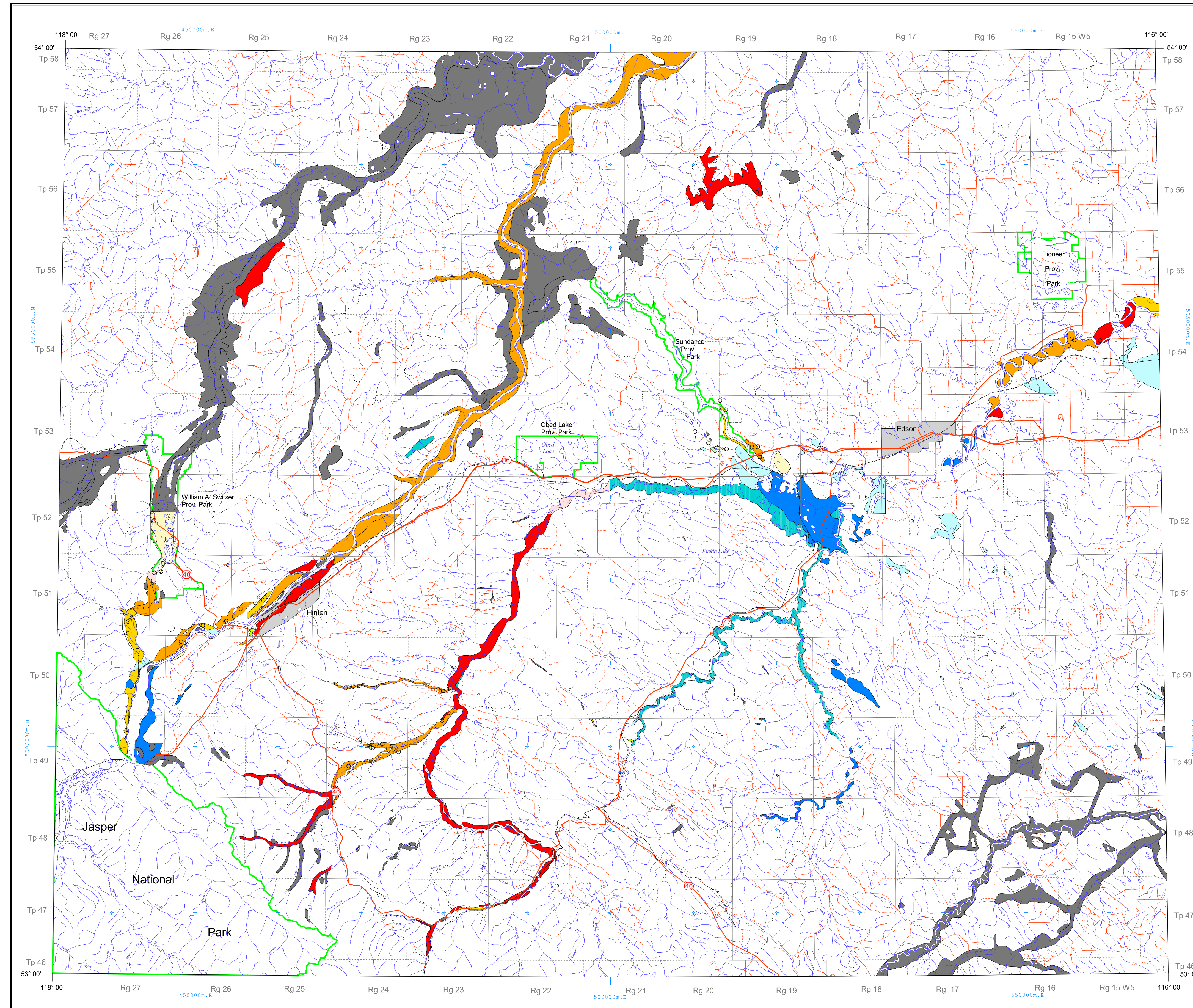


NTS 83F
AGGREGATE



FEATURES LEGEND

site investigated	△
drill hole	○
Deposit Type	
clean	GRAVEL (red)
dirty/very dirty	sandy GRAVEL (orange)
unknown	gravelly SAND (yellow)
UNKNOWN deposit type	SAND (blue)

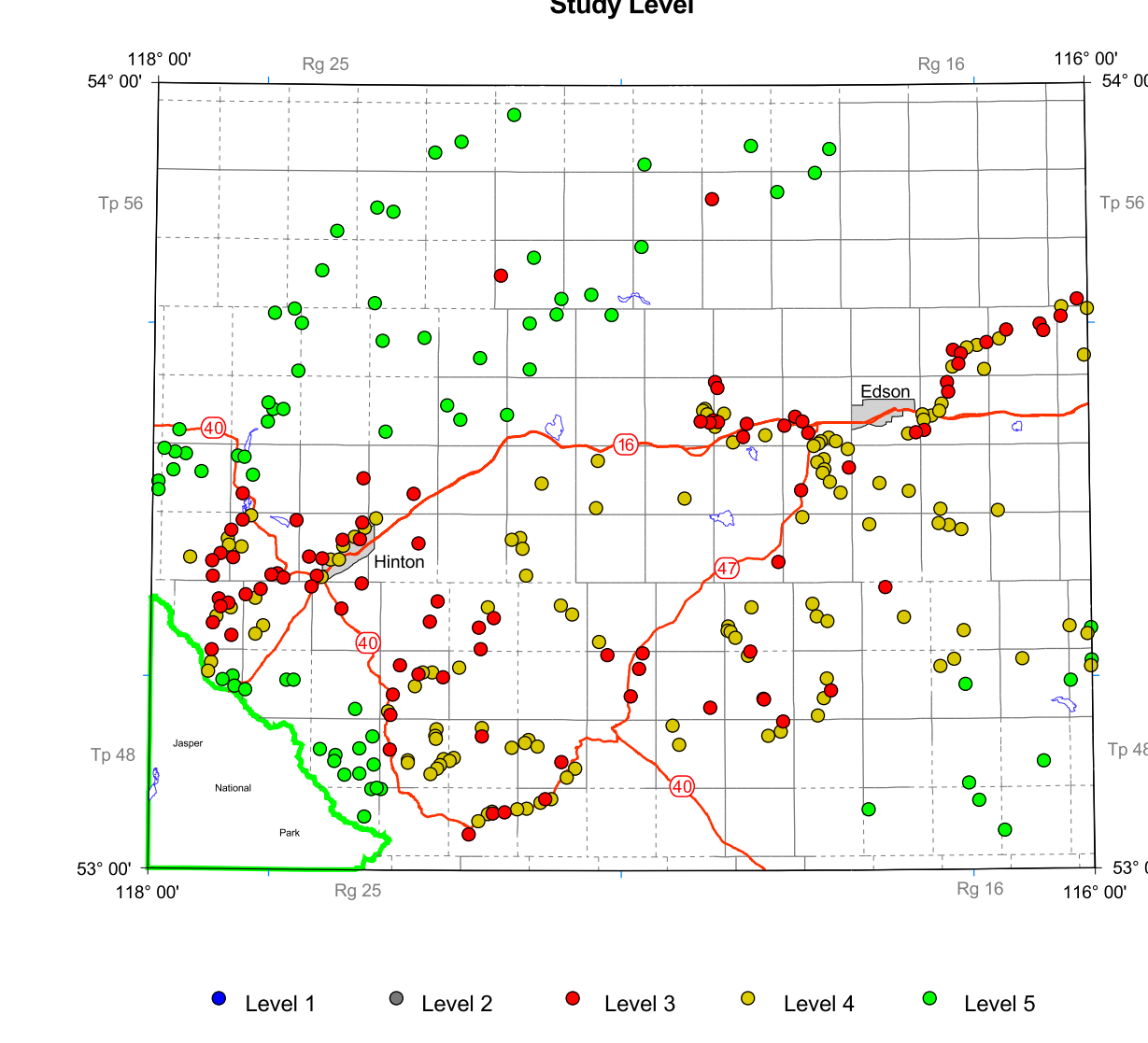
Deposit Type Definitions:
 GRAVEL deposit: contains greater than 75% gravel.
 sandy GRAVEL deposit: contains 50% to 75% gravel.
 gravelly SAND deposit: contains 25% to 50% gravel.
 SAND deposit: contains less than 25% gravel.
 UNKNOWN deposit: amount of gravel unknown.
 clean deposit: contains less than 3% silt and clay.
 dirty deposit: contains 3% to 10% silt and clay.
 very dirty deposit: contains greater than 10% silt and clay.
 unknown: contains unknown percentage of mixed silt and clay.

BASEMAP LEGEND

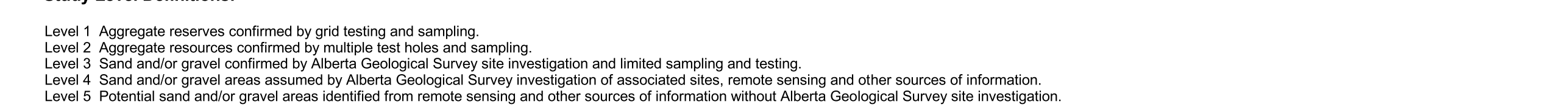
River and lake	—
River - intermittent	—
Road - paved	—
Road - gravel	—
Road - unimproved	—
Railway line	—
Trail	—
Park boundary - provincial/national	—
City/town	—
Metis settlement	—
Indian reserve	—
Township/range - surveyed	—
Township/range - unsurveyed	—
UTM, zone 11 grid	—

This is a common map legend. Not all units may be present on this map.

Study Level



Genesis or Geological Feature



Study Level Definitions:

- Level 1 Aggregate reserves confirmed by grid testing and sampling.
- Level 2 Aggregate resources confirmed by multiple test holes and sampling.
- Level 3 Sand and/or gravel confirmed by Alberta Geological Survey site investigation and limited sampling and testing.
- Level 4 Sand and/or gravel areas assumed by Alberta Geological Survey investigation of associated sites, remote sensing and other sources of information.
- Level 5 Potential sand and/or gravel areas identified from remote sensing and other sources of information without Alberta Geological Survey site investigation.

References:

Edwards, D. and Sham, P.C. (1986): Aggregate resources of the Carrot Creek map area, NTS 83G/12; Alberta Research Council, Map A83G12, scale 1:50 000.
 Edwards, W.A.D. (1988): Aggregate resources of the Entrance map area, NTS 83F/5; Alberta Research Council, Map A83F5, scale 1:50 000.
 Edwards, W.A.D. and Scafe, D. (1996): Mapping and resource evaluation of the Tertiary and preglacial sand and gravel formations of Alberta; Alberta Energy-Alberta Geological Survey, OFR 1994-08, 241 p.
 Fox, J.C. (1981): Aggregate resources of the Edson map area, NTS 83F; Alberta Research Council, Map A83F, scale 1:250 000.
 Fox, J.C. (1983): Aggregate resources of the Cadomin map area, NTS 83F/3; Alberta Research Council, Map A83F3, scale 1:50 000.
 Fox, J.C. (1983): Aggregate resources of the Erith map area, NTS 83F/7; Alberta Research Council, Map A83F7, scale 1:50 000.
 Fox, J.C. (1983): Aggregate resources of the Pedley map area, NTS 83F/6; Alberta Research Council, Map A83F6, scale 1:50 000.
 Fox, J.C. (1984): Aggregate resources of the Foothills map area, NTS 83F/2; Alberta Research Council, Map A83F2, scale 1:50 000.
 Fox, J.C. (1987): Aggregate resources of the Moose Creek map area, NTS 83F/8; Alberta Research Council, Map A83F8, scale 1:50 000.
 Fox, J.C. and Edwards, W.A.D. (1988): Aggregate resources of the Bickerdike map area, NTS 83F/10; Alberta Research Council, Map A83F10, scale 1:50 000.
 Jones, N. (1981): Aggregate resources of the Wabamun map area, NTS 83G; Alberta Research Council, Map A83G, scale 1:250 000.
 Sham, P. (1987): Aggregate resources of the Edson map area, NTS 83F/9; Alberta Research Council, Map A83F9, scale 1:50 000.

Acknowledgement:

GIS/Database/ Cartography by: M.C. Price, D.K. Chao, Z.A. Amer and N.L. Blundon
 Digital base map provided by: Spatial Data Warehouse

Disclaimer:

The Alberta Geological Survey and its employees and contractors make no warranty, guarantee or representation, express or implied, or assume any legal liability regarding the correctness, accuracy, completeness, or reliability of this publication. When using information from this publication in other publications or presentations, due acknowledgement should be given to the Alberta Energy and Utilities Board/Alberta Geological Survey.

Published 2003
 Copies of this map may be obtained from:
 Information Sales
 Alberta Geological Survey
 Telephone: (780) 422-3767
 Web site: www.ags.gov.ab.ca

Map 283
**Sand and Gravel Deposits with Aggregate Potential
 Edson, Alberta (NTS 83F)**

Geology compiled by: W.A.D. Edwards, H.D. Budney, T. Berezniuk and G. Stoyko

