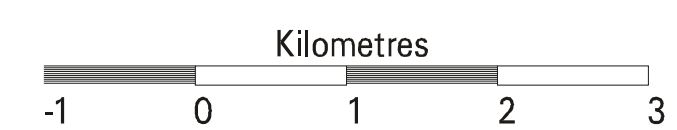
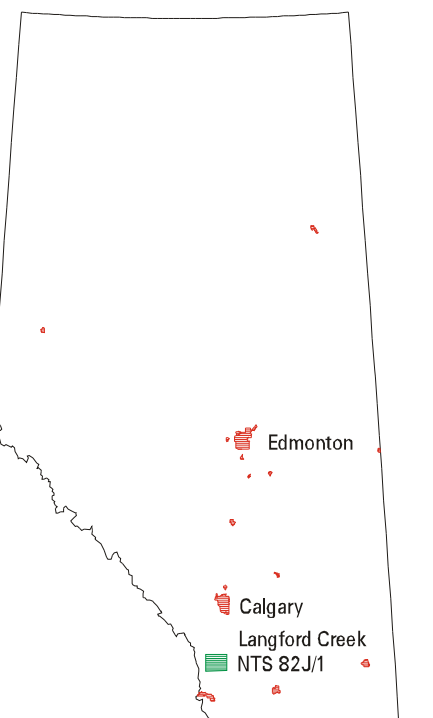


Legend:

Scale 1:50,000

- | | | | | |
|---|---|---|---|--|
| <p>TERTIARY</p> <ul style="list-style-type: none"> Porcupine Hills Fm <p>CRETACEOUS OR TERTIARY</p> <ul style="list-style-type: none"> Willow Creek Fm <p>CRETACEOUS</p> <ul style="list-style-type: none"> St. Mary River Fm Bearpaw Fm Belly River Fm Wapiabi Fm Cardium Fm Blackstone Fm Blairmore Gp Kootenay Gp | <p>JURASSIC</p> <ul style="list-style-type: none"> Fernie Gp <p>TRIASSIC TO PENNSYLVANIAN</p> <ul style="list-style-type: none"> Spray River and Spray Lake Gps <p>MISSISSIPPIAN</p> <ul style="list-style-type: none"> Etherington, Mount Head, Turner Valley, Pekisko, and Shunda Fms Banff Fm <p> Fault</p> | <ul style="list-style-type: none"> Phosphate Geochemical Anomaly Metallogenic Occurrence Rock Samples Stream Samples | <ul style="list-style-type: none"> Trench Coal Drillhole, CANPAC Minerals Ltd. (Coal Intersected) Coal Drillhole, CANPAC Minerals Ltd. (No Coal Intersected) Coal Drillhole, Coleman Collieries Ltd. (Coal Intersected) Granby Mining Co. Ltd. (Coal Intersected) Scurry Rainbow Oil Ltd. (Coal Intersected) Gas Pool Abandoned Well Site Capped Gas Well Site Standing Well Site | <ul style="list-style-type: none"> Forestry Reserve Ecological Reserve Major Highway Secondary Highway and Road Contour (50 metre interval) Major Lake/River |
|---|---|---|---|--|

Location Map



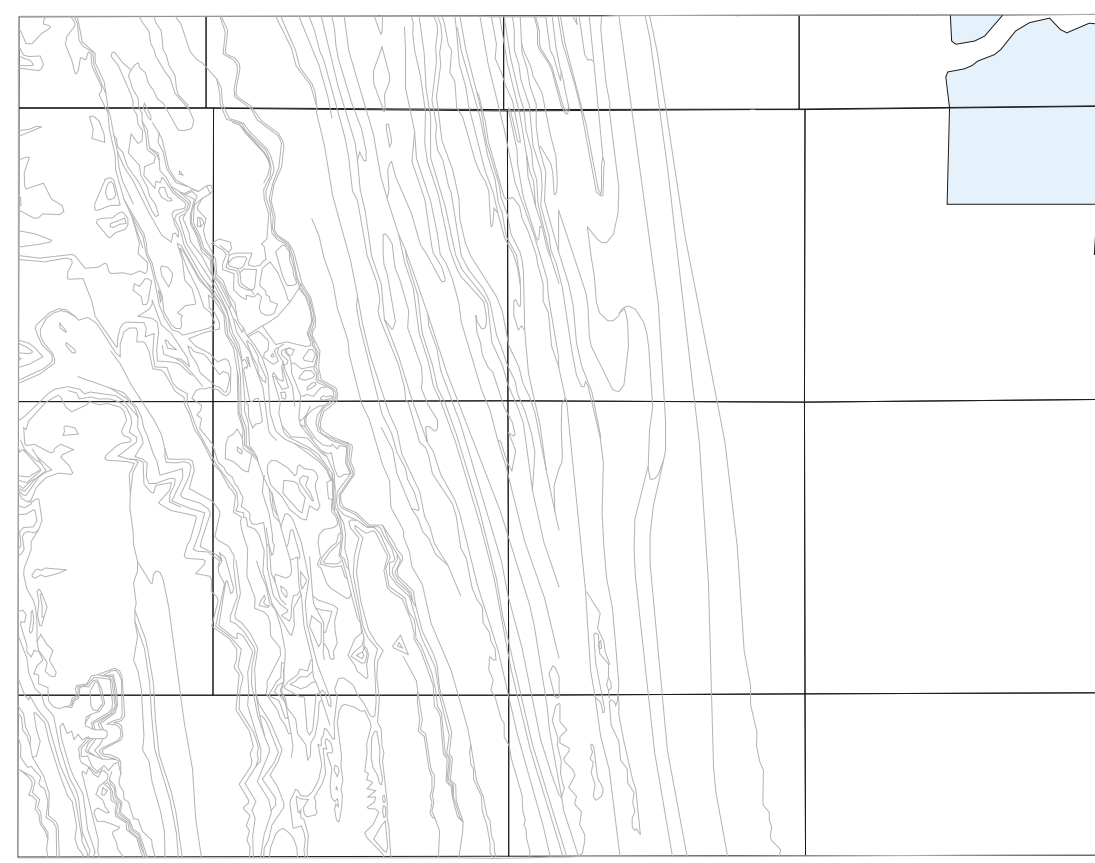
Note: See specific reference documents on Map 2

**Southern Alberta NATMAP Project
Langford Creek, Alberta - NTS 82J/1**

D.K. Chao, R.J.H. Richardson, D. Fietz*

Original Compilation: 1995
Revised and Released: 1996
Alberta Geological Survey Map 231

Environmentally Significant Areas

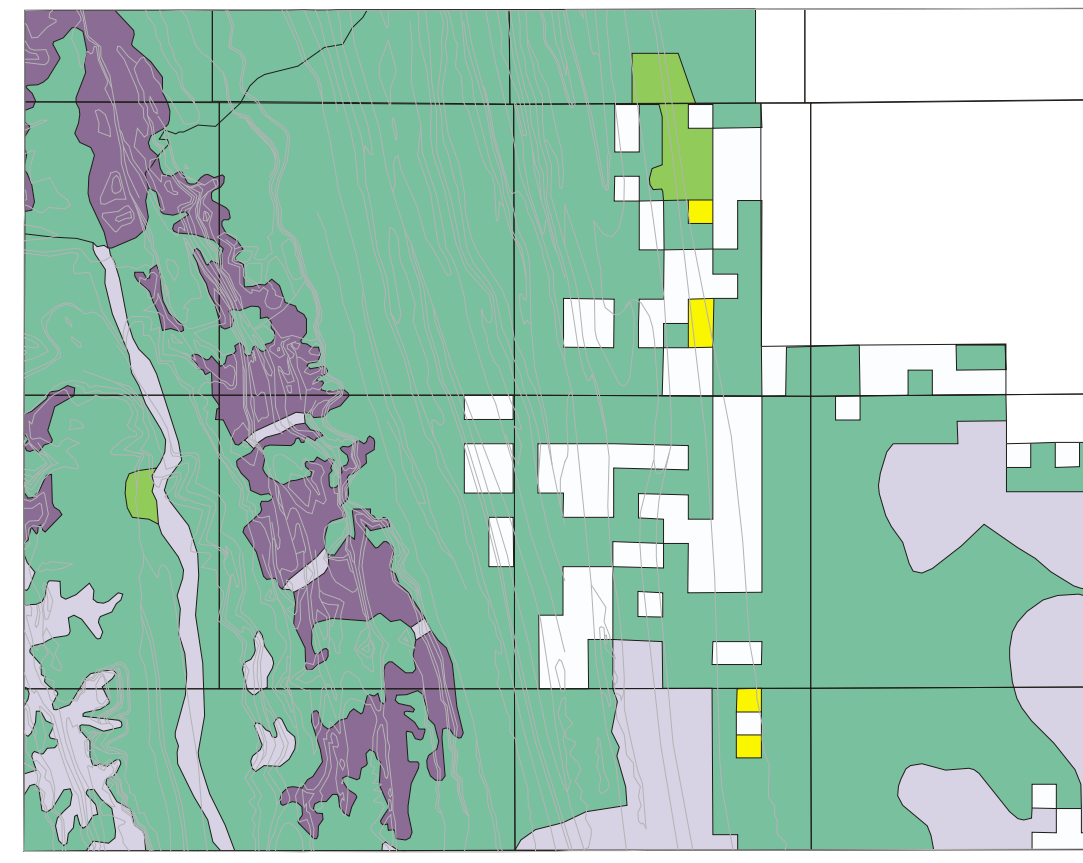


Scale 1:250,000

Regional

Source: Alberta Dept. of Environmental Protection

Refined Eastern Slopes Zones

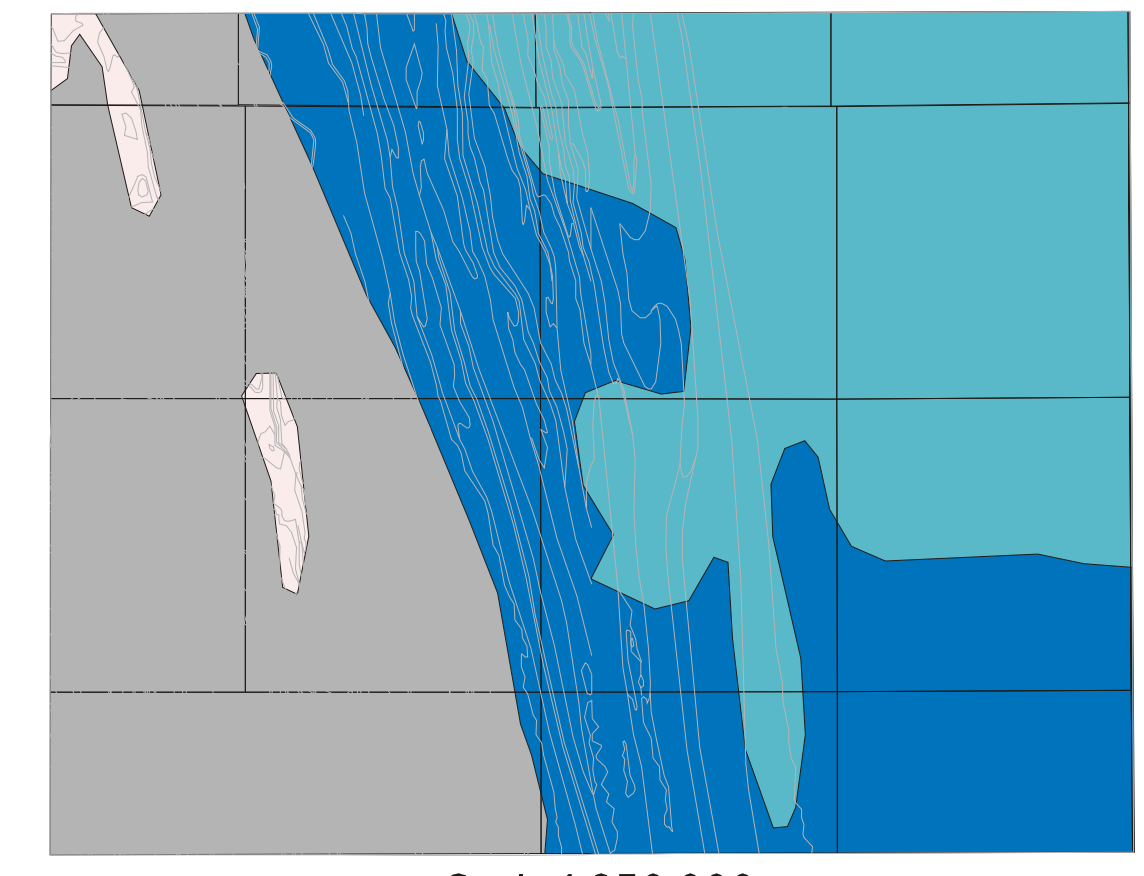


Scale 1:250,000

Prime Protection
Critical Wildlife
General Recreation
Multiple Use
Agriculture

Source: Alberta Dept. of Environmental Protection

Natural Regions and Sub-Regions

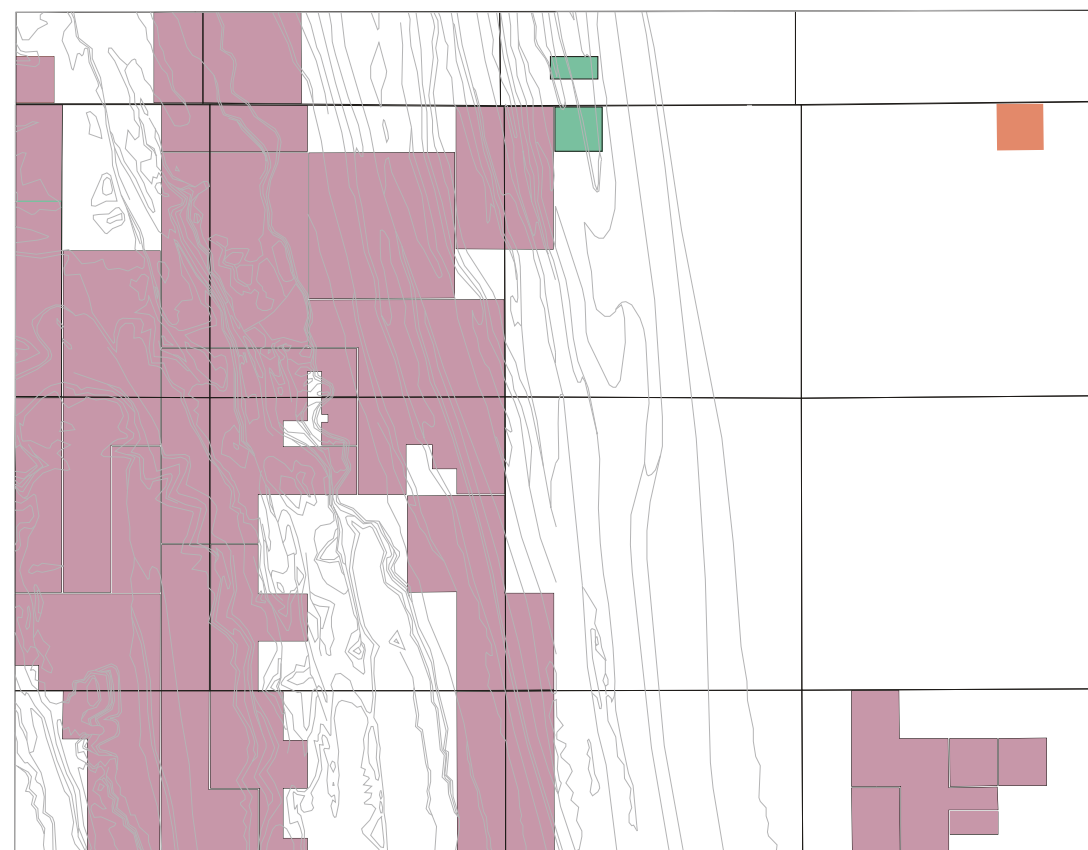


Scale 1:250,000

Rocky Mountain, Alpine
Rocky Mountain, Sub-Alpine
Rocky Mountain, Montane
Parkland, Foothills Parkland

Source: Resource Data Division, Alberta Dept. of Environmental Protection

Petroleum and Natural Gas Leases and Licences

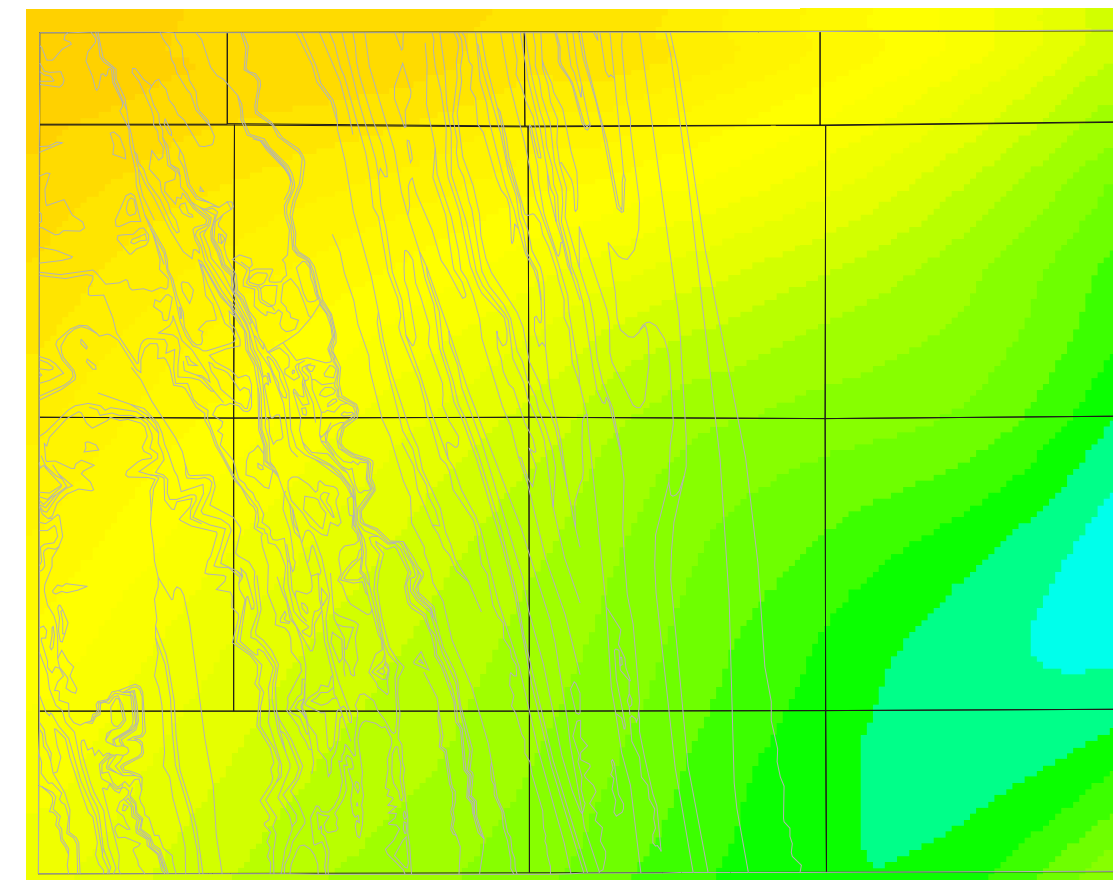


Scale 1:250,000

Petroleum and Natural Gas Licence (5 year term; Foothills)
Petroleum and Natural Gas Lease (5 year term, Foothills)
Petroleum and Natural Gas Lease (5 year term)
Natural Gas Lease

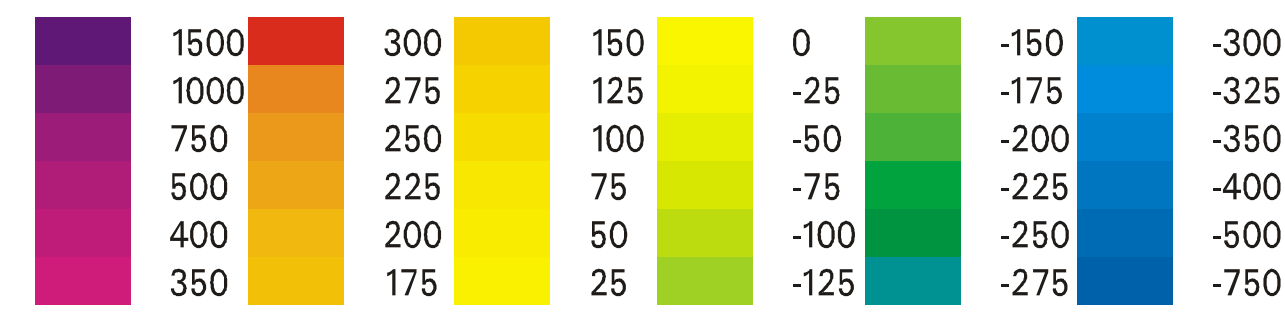
Source: Mineral Access, Geology, Mapping Branch, Alberta Dept. of Energy (May, 1995)

Aeromagnetic Field Anomalies



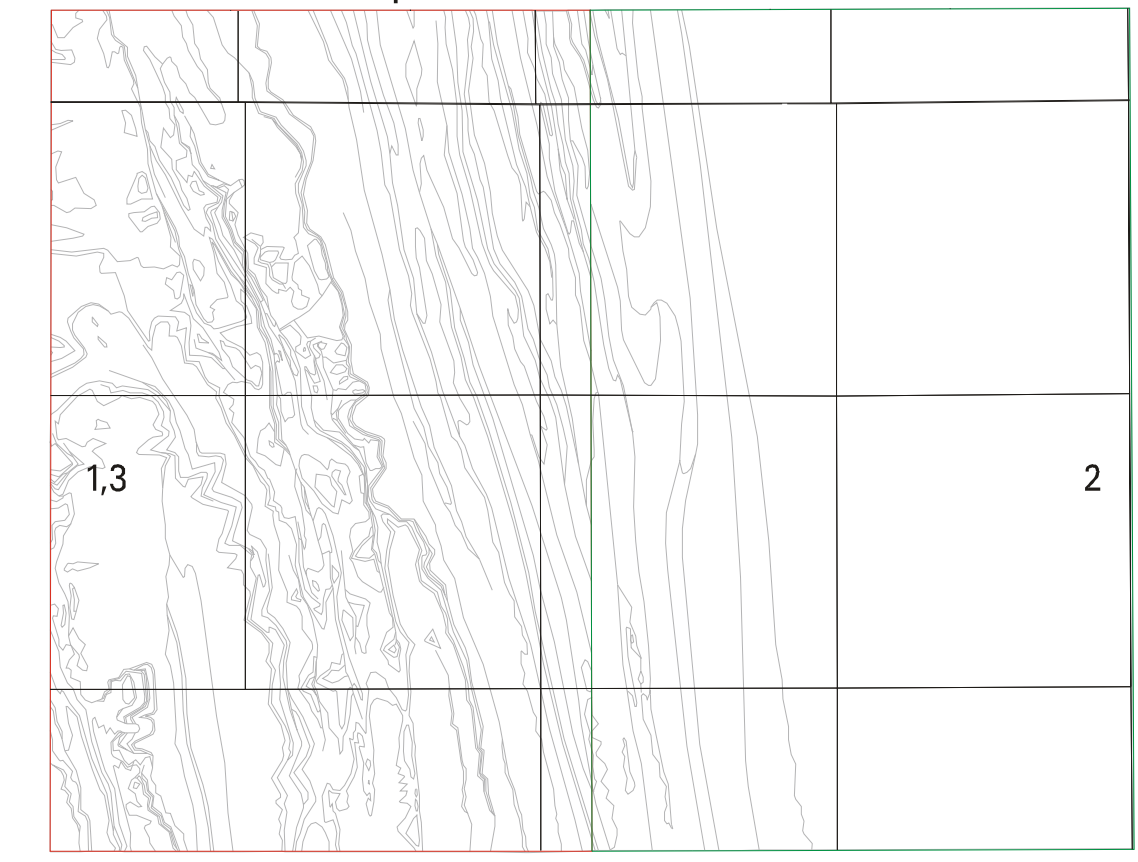
Scale 1:250,000

nano Teslas



Geophysical Data Centre, Natural Resources Canada

Index to Specific Reference Documents



Scale 1:250,000

INDEX TO SPECIFIC REFERENCE DOCUMENTS FOR THE MAPSHEET COVERAGE

- Dawson, F.M. Pre-1992. (Unpublished) Geological Survey of Canada - Institute of Sedimentary and Petroleum Geology, Western Canada Coal Atlas Project: Kootenay Group Pilot Maps 82G/15, 82G/16, 82J/1 and 82J/2. Scale 1:70 000 and 1:35 000. Outline defined as 1 on the index map.
- Douglas R.J.W., Shaw, G. and Hume, G.S. 1940-46. Langford Creek mapsheet. Geological Survey of Canada Map 981A (82J/1 east half). Scale 1:63 360. Outline defined as 2 on the index map.
- Norris, D.K. 1989. Livingstone River. Geological Survey of Canada Open File Report 2126 (82J/1 west half). Scale 1:50 000. Outline defined as 3 on the index map.

RELIABILITY AND USE

Information relating to this mapsheet has been derived from a number of different sources, scales and formats (digital and hard copy). While every attempt has been made to accurately portray the data, this map is intended to provide a basic compilation and overview of Earth Resources; for more specific informational needs please contact the Land Use Planning and Environmental Management Support Team, Alberta Geological Survey, Alberta Department of Energy, 6th Floor, North Tower, Petroleum Plaza, 9945-108 Street, Edmonton, Alberta, Canada T5K 2G6 (phone: (403)422-1927).

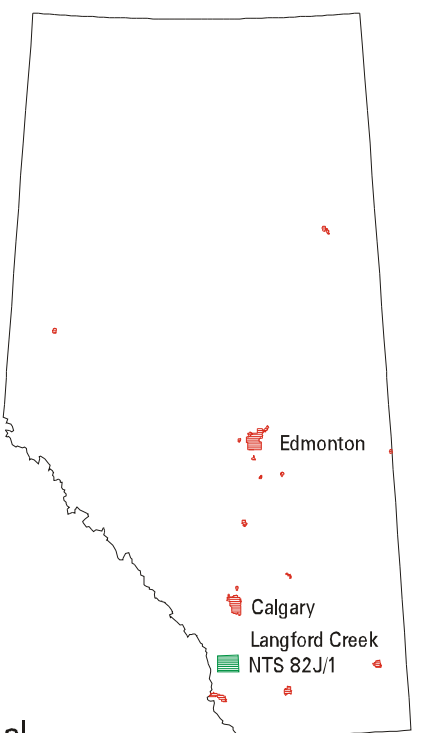
FUNDING

Funds for this project have been provided by the Alberta Department of Energy.

NOTE

The 'Near-surface Non-renewable Mineral Resource Potential Map' is a semiquantitative and subjective evaluation of the mineral resource potential based on limited data, current resource technology and general economic geology factors. CAUTION SHOULD BE EMPLOYED IN THE USE OF THESE ANALYSES! The analyses are based mainly on geological criteria and do not take into account actual economic constraints to development (related to ore grades, reserves, recoverability, accessibility, markets, etc.), now, or in the future.

Location Map



Southern Alberta NATMAP Project Langford Creek, Alberta - NTS 82J/1

D.K. Chao, R.J.H. Richardson, D. Fietz*

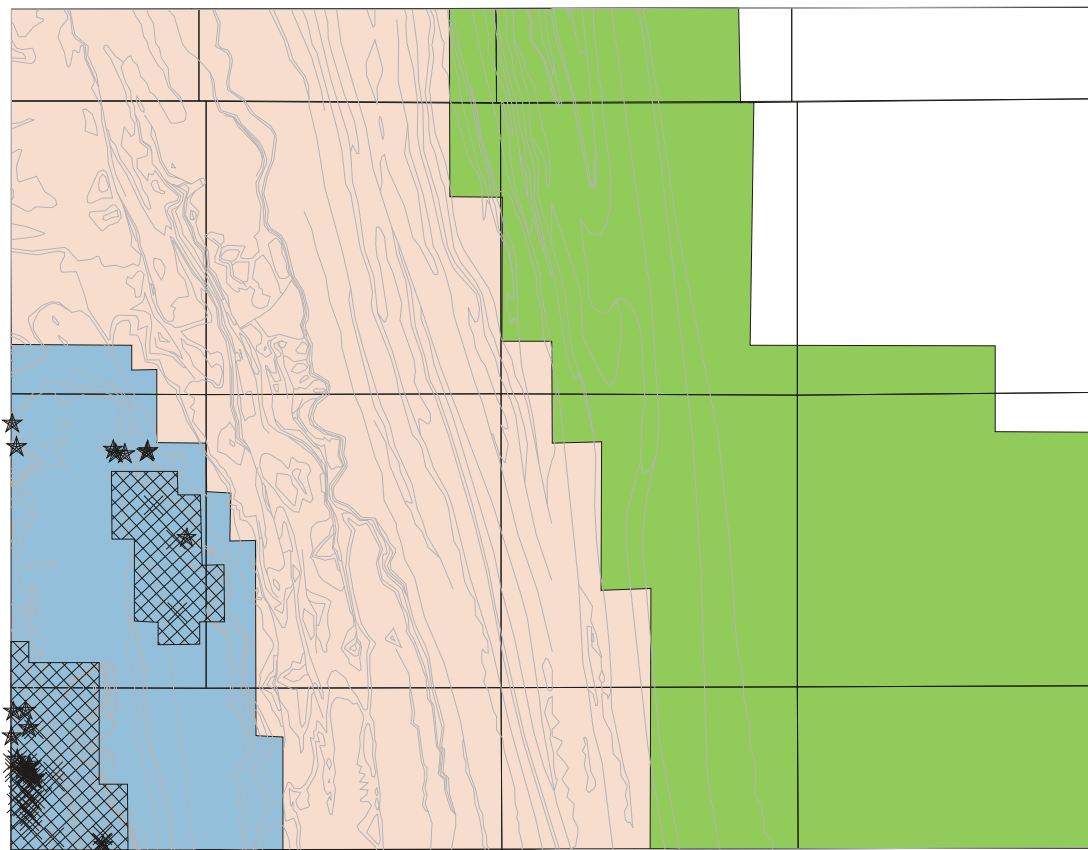
Original Compilation: 1995
Revised and Released: 1996
Alberta Geological Survey Map 231

Map 2 of 2

* ELAD Enterprises Inc.



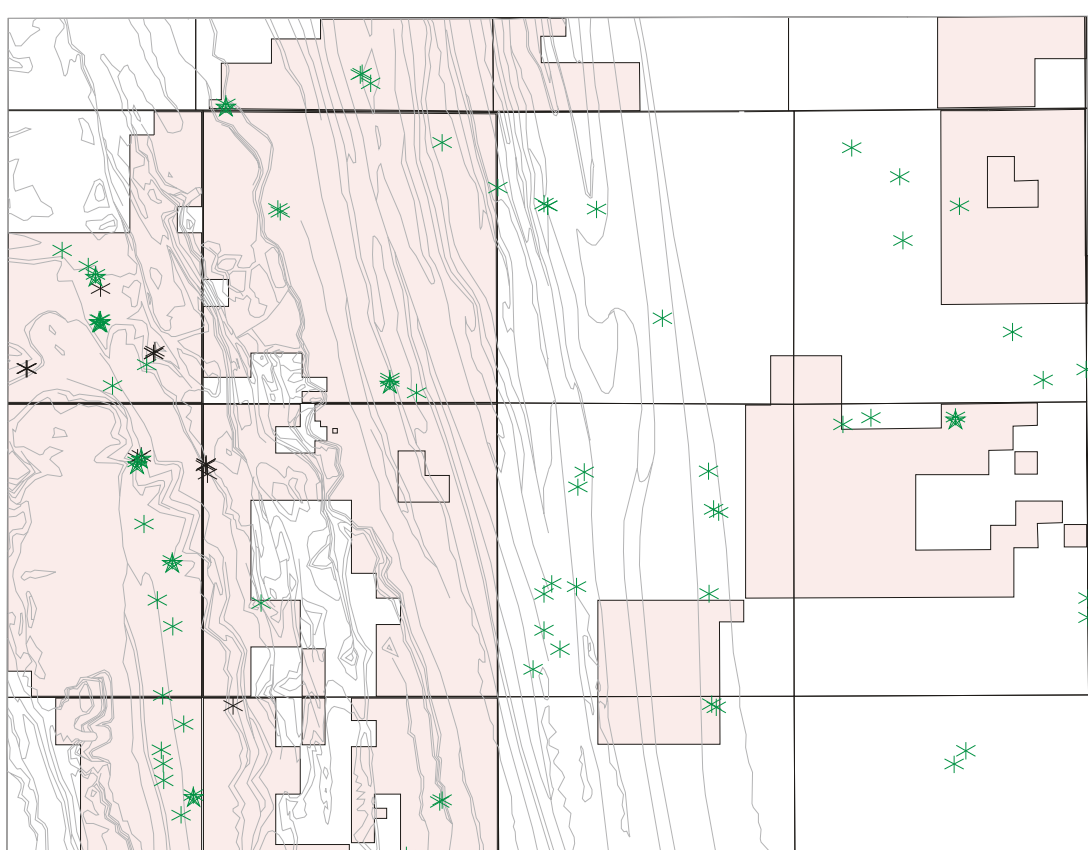
Land Classification for Coal Exploration / Development, and Coal Exploration Data



Scale 1:250,000

Coal Category 1
Coal Category 2
Coal Category 3
E.U.B. Coal Field
Coal Drillhole Location
Coal Trench Location
Coal Mine Location

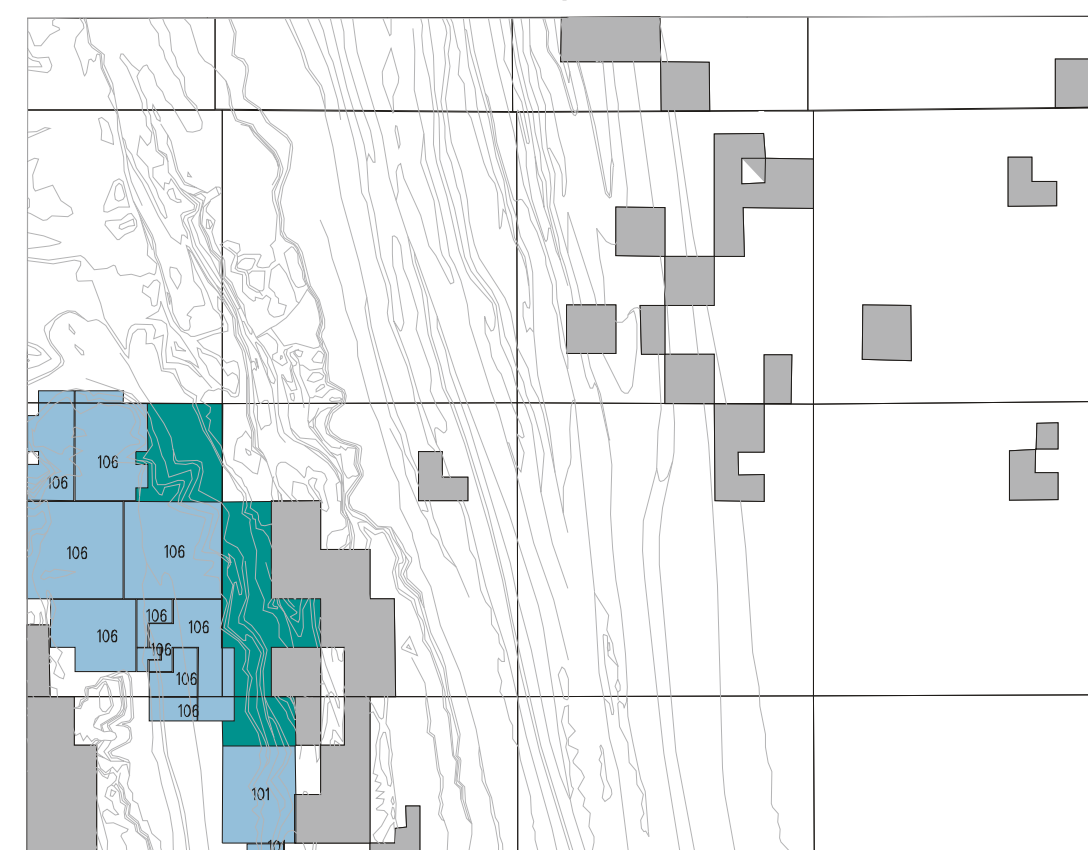
Metallic Mineral Permit Areas



Scale 1:250,000

Rock Sample Location*
Stream Sediment Sample Location*
Geochemical Sample Location*
Metallic Mineral Agreement**

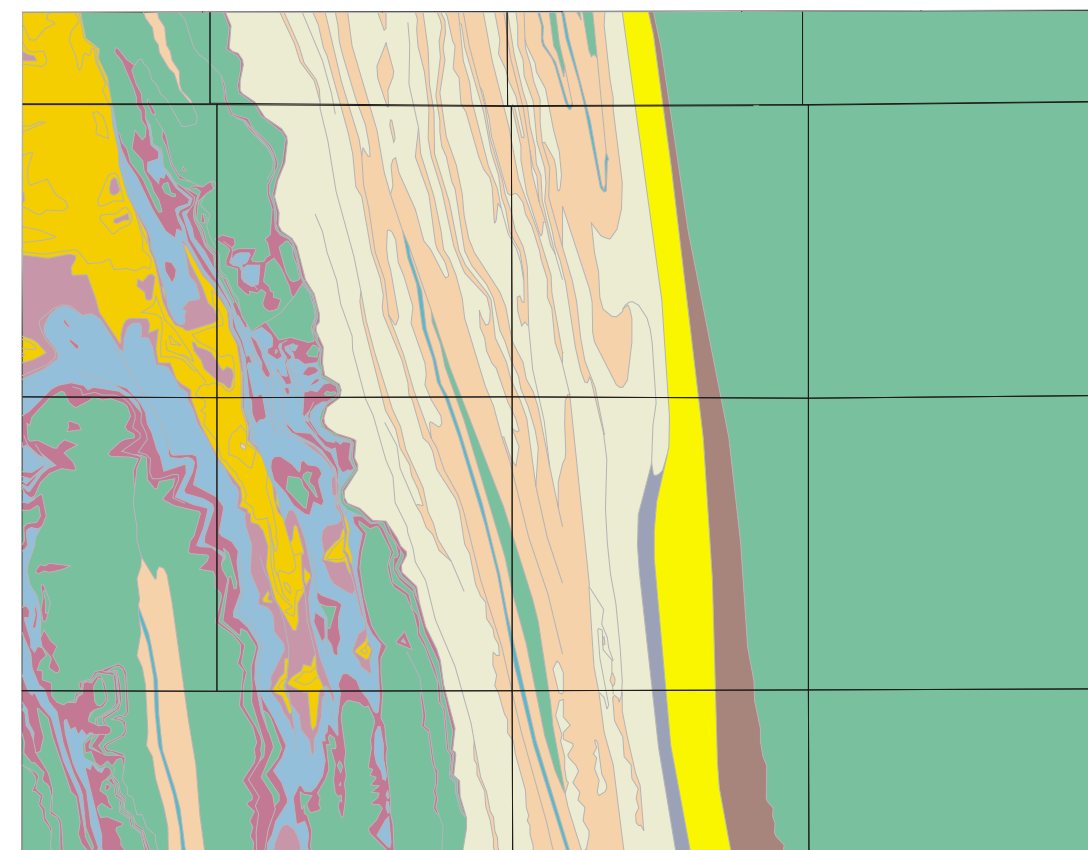
Coal Dispositions



Scale 1:250,000

Coal Lease
Freehold
Area with registered right of First Refusal
101. Manalta Coal Ltd.
106. Chinook Coal Ltd.

Near-surface Non-renewable Mineral Resource Potential



Scale 1:250,000

Sandstone (Building Stone)
Sandstone/Shale (Cement)
Sandstone (Building Stone)/Clay (Ceramic)
Gem Fossils (Ammolite)/Shale (Lightweight Aggregates)
Clay (Ceramic)/Magnetite
Shale (Cement)
Sandstone (Crushed Stone/Rip Rap)
Coal/Clay (Ceramic)
Phosphate
Sandstone (Building Stone)/Phosphate/Quartzite
Dolomite (Crushed Stone/Rip Rap)
Limestone (Cement/Lime)

Source: Evaluation by W.H. Hamilton, Alberta Geological Survey

* Canada-Alberta MDA Project: MDA 93-04-034; ARC Open File Report 1994-07
** Mineral Access, Geology, Mapping Branch, Alberta Dept. of Energy (May, 1995)