

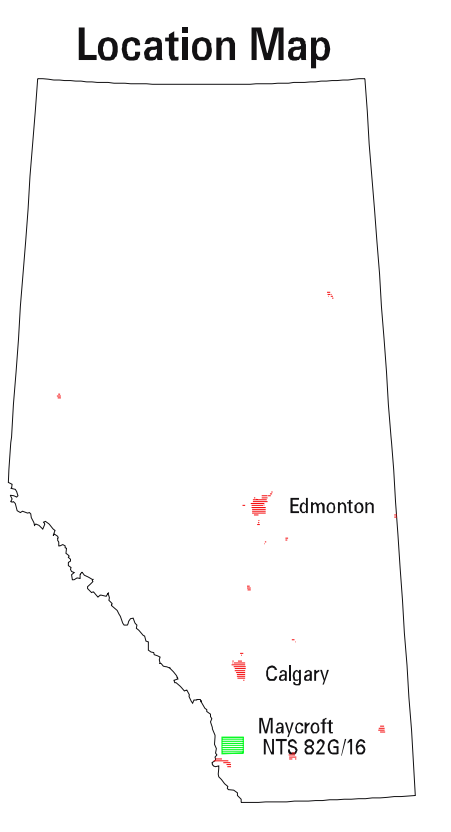
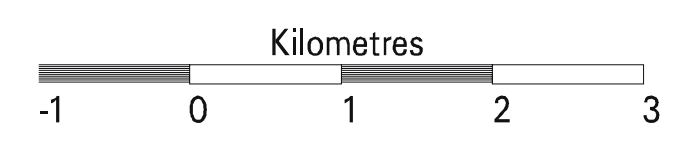
- Legend**
- TERTIARY**
- Porcupine Hills Fm
- CRETACEOUS OR TERTIARY**
- Willow Creek Fm
- CRETACEOUS**
- St. Mary River Fm
  - Bearpaw Fm
  - Belly River Fm
  - Wapiabi Fm
  - Cardium Fm
  - Blackstone Fm
  - Crowsnest Fm
  - Blairmore Gp
  - Kootenay Gp

- JURASSIC**
- Fernie Gp
- TRIASSIC TO PENNSYLVANIAN**
- Spray River and Spray Lake Gps
- MISSISSIPPIAN**
- Etherington, Mount Head, Turner Valley, Pekisko, and Shunda Fms
  - Banff Fm
- Fault

- Clay/Shale, Common
- Magnetite
- Phosphate
- Geochemical Anomaly
- Metallogenic Occurrence
- Rock Samples
- Stream Samples

- Scale 1:50,000**
- Coal Trench
  - Coal Drillhole, Scurry Rainbow Oil Ltd. (Coal Intersected)
  - Coal Drillhole, Scurry Rainbow Oil Ltd. (No Coal Intersected)
  - Surface Coal Mine Location
  - Underground Coal Mine Location
  - Gas Pool
  - Well Location (Abandoned)
  - Well Location (Capped)
  - Well Location (Proposed/Rejected)
  - Well Location (Suspended)

- Forestry Reserve
- Ecological Reserve
- Major Highway
- Secondary Highway and Road
- Contour (50 metre interval)
- Major Lake/River



Note: See specific reference documents on Map 2

**Southern Alberta NATMAP Project  
Maycroft, Alberta - NTS 82G/16**

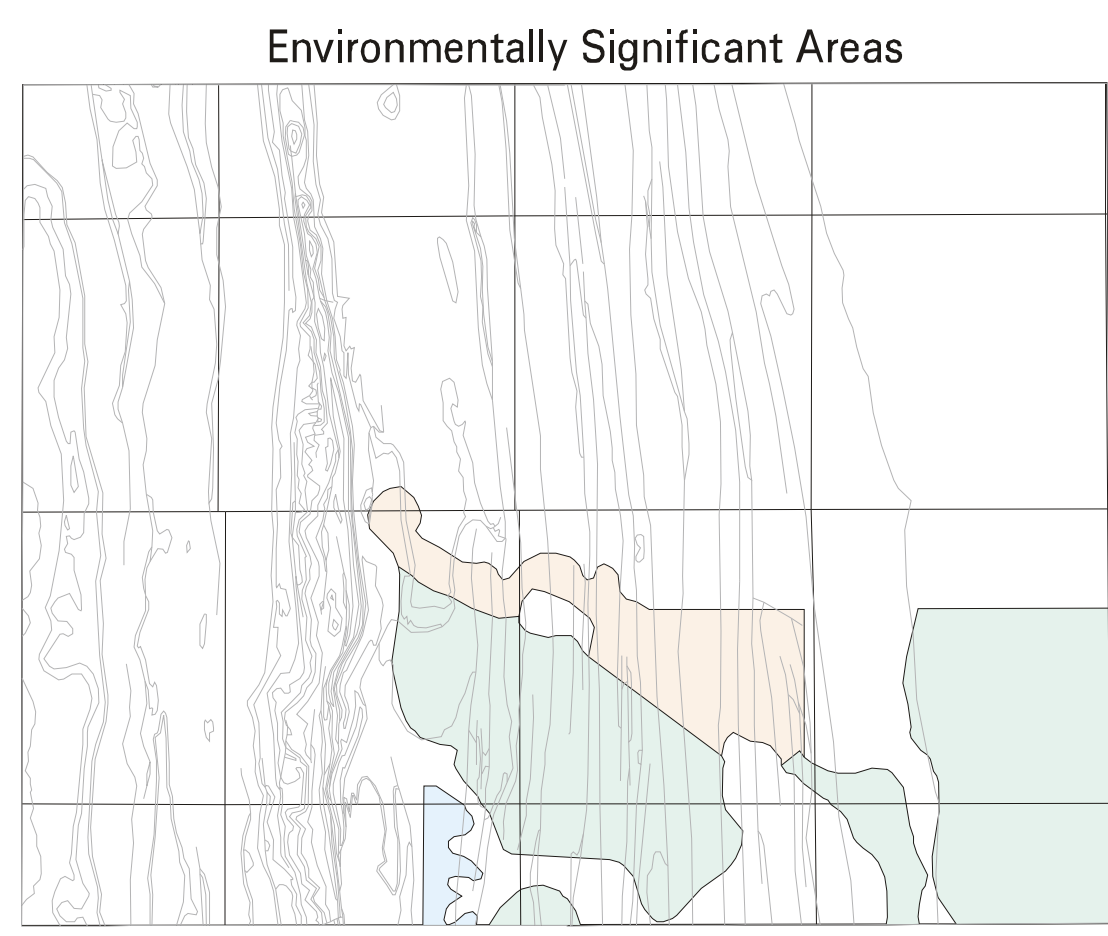
D.K. Chao, R.J.H. Richardson, D. Fietz\*

Original Compilation: 1995  
Revised and Released: 1996  
Alberta Geological Survey Map 230

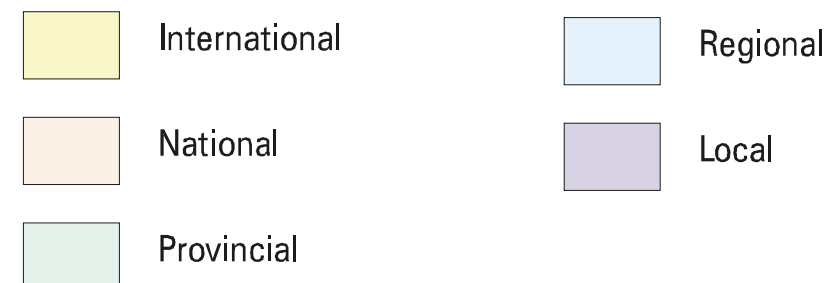
Map 1 of 2

\* ELAD Enterprises Inc.

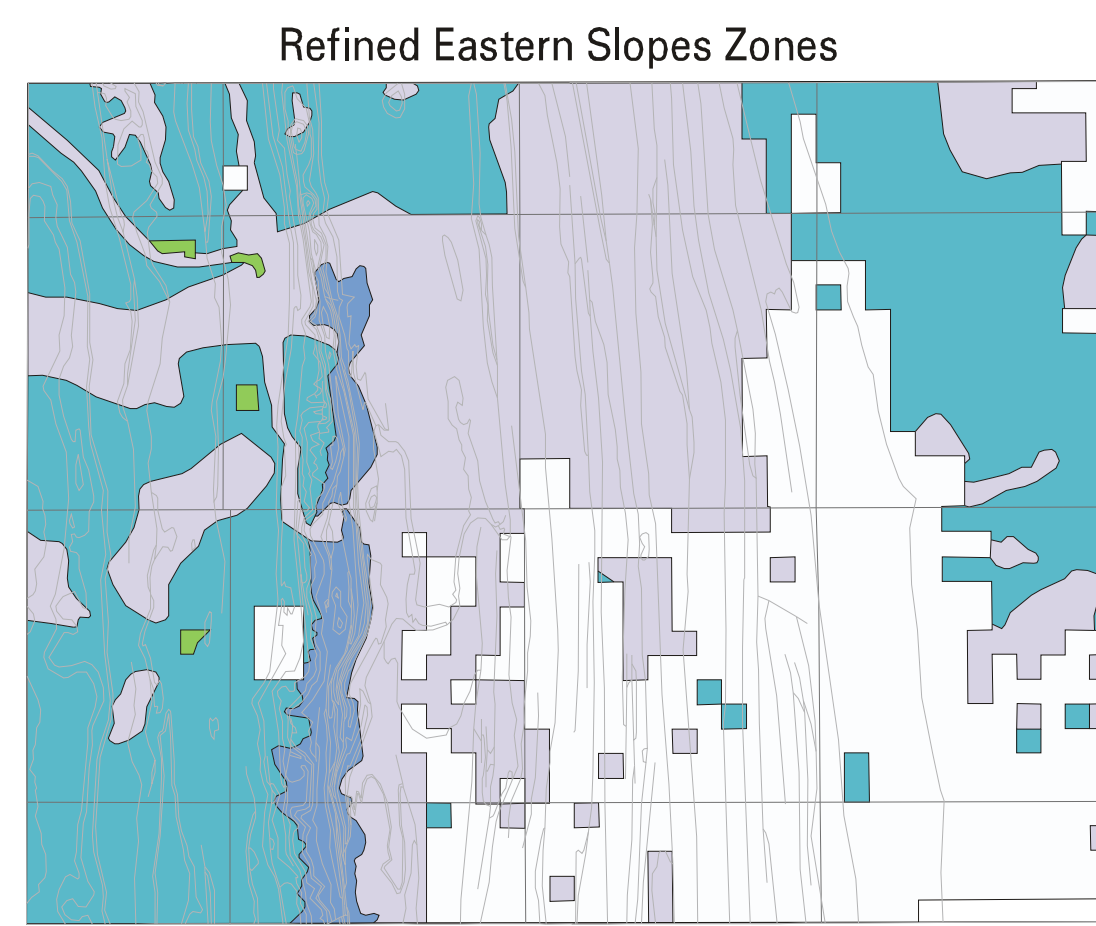




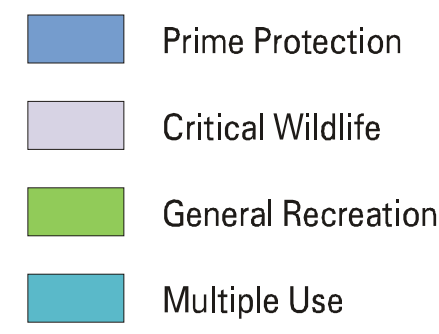
Scale 1:250,000



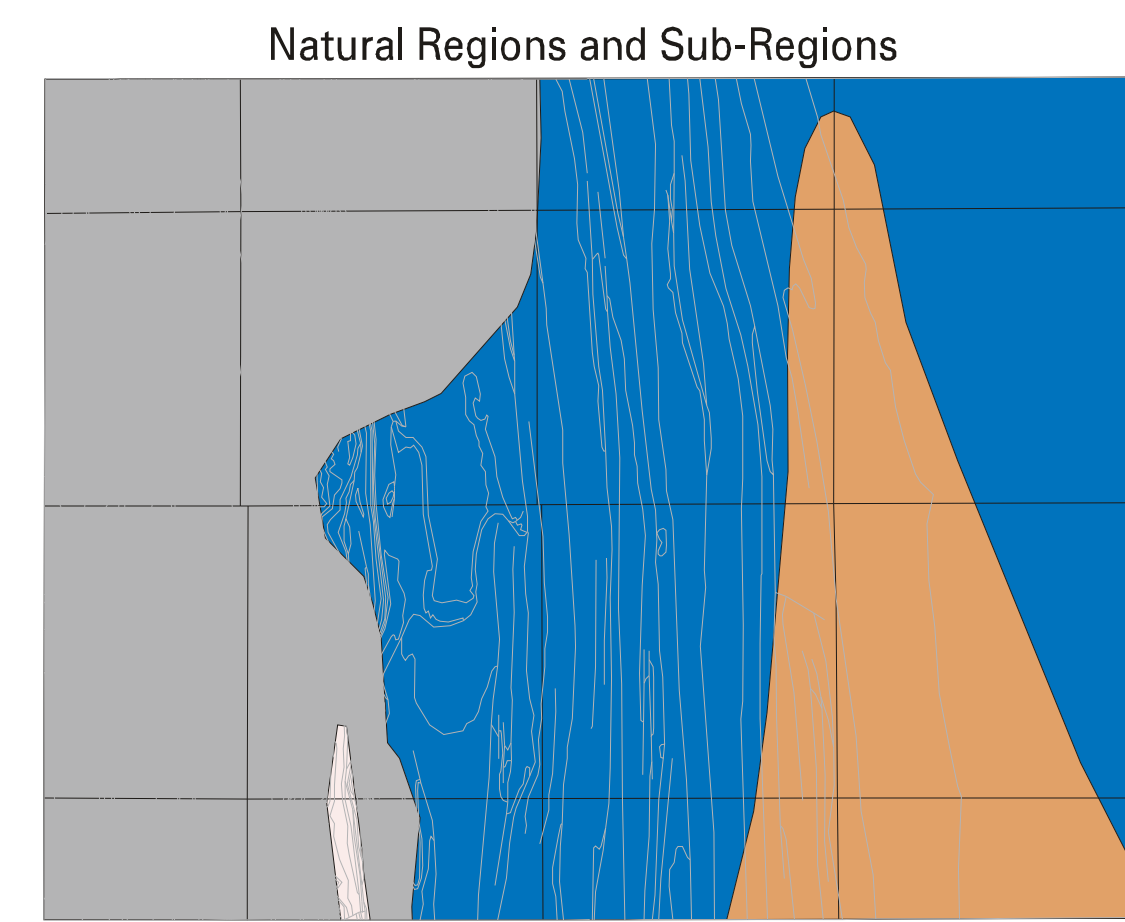
Source: Alberta Dept. of Environmental Protection



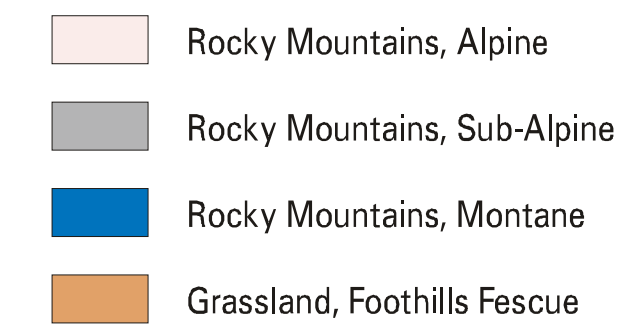
Scale 1:250,000



Source: Alberta Dept. of Environmental Protection

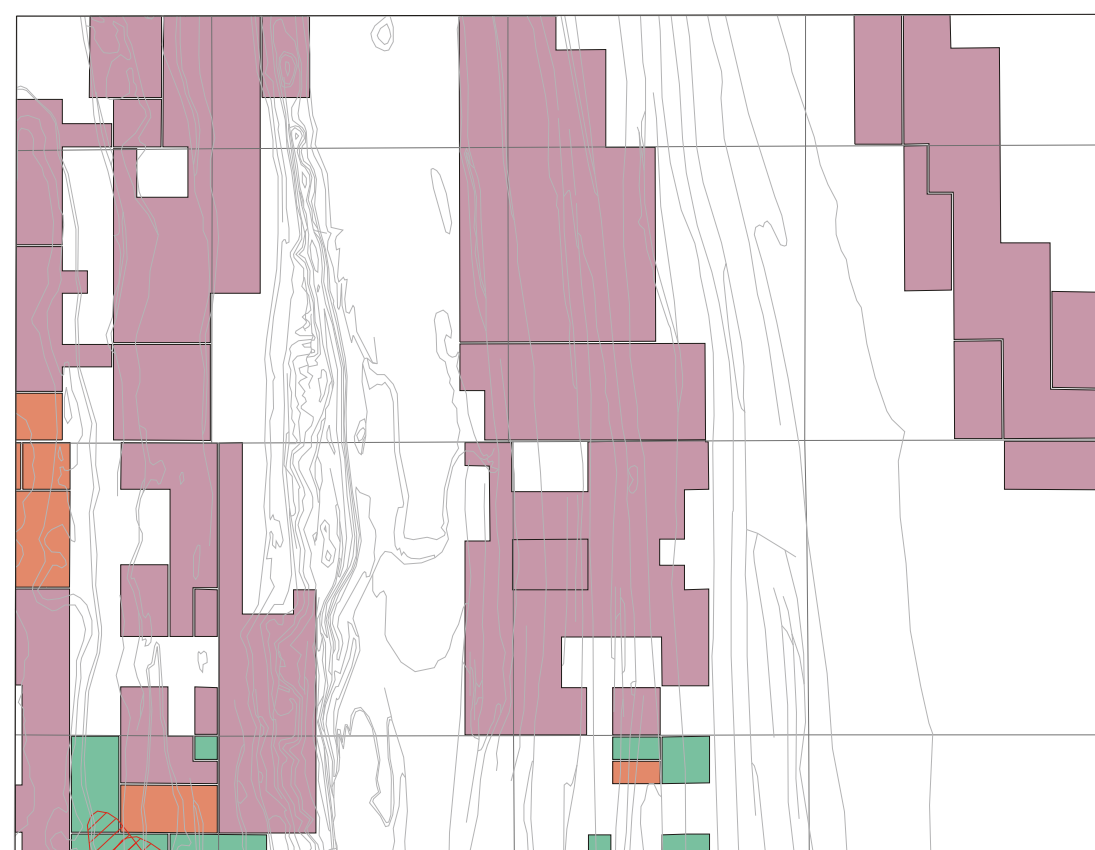


Scale 1:250,000

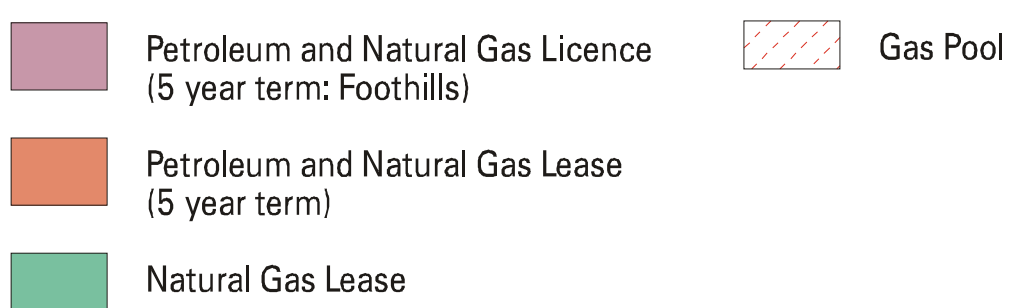


Source: Resource Data Division, Alberta Dept. of Environmental Protection

Petroleum and Natural Gas Leases and Licences

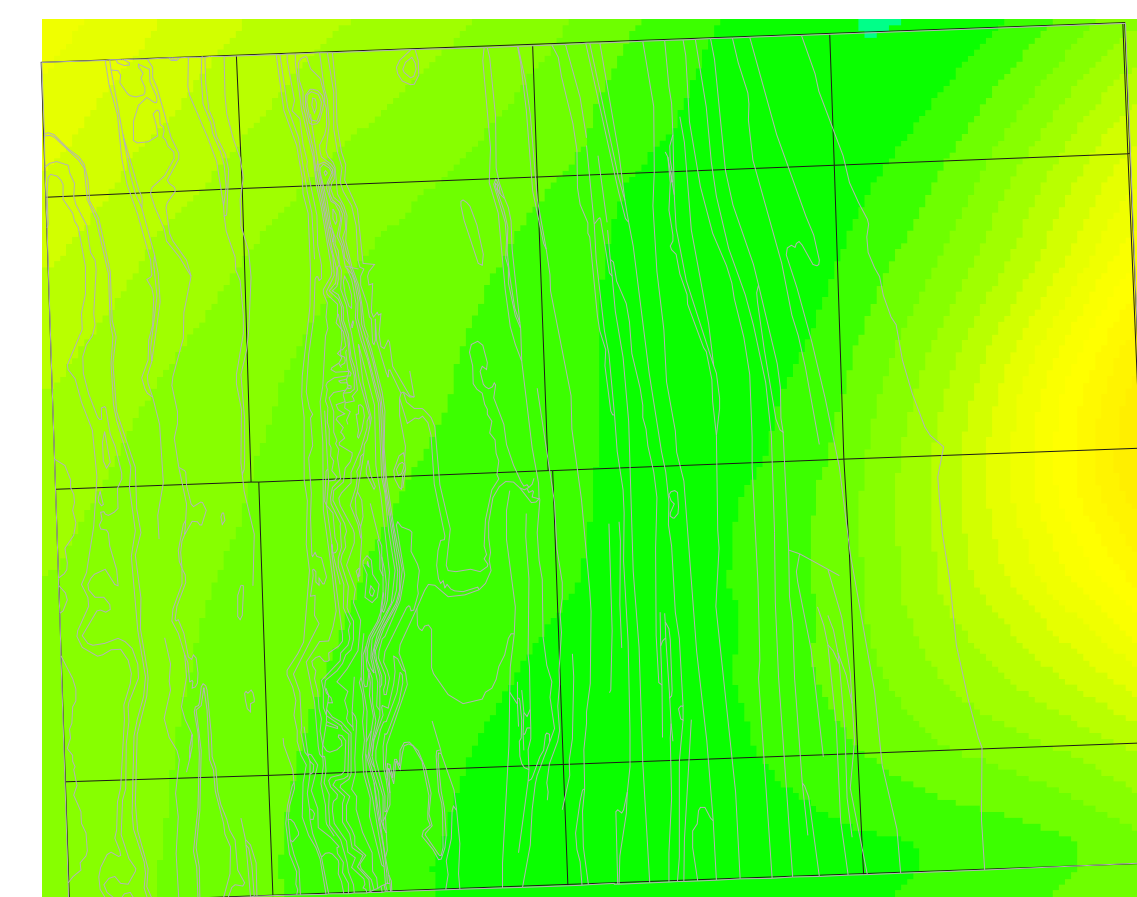


Scale 1:250,000

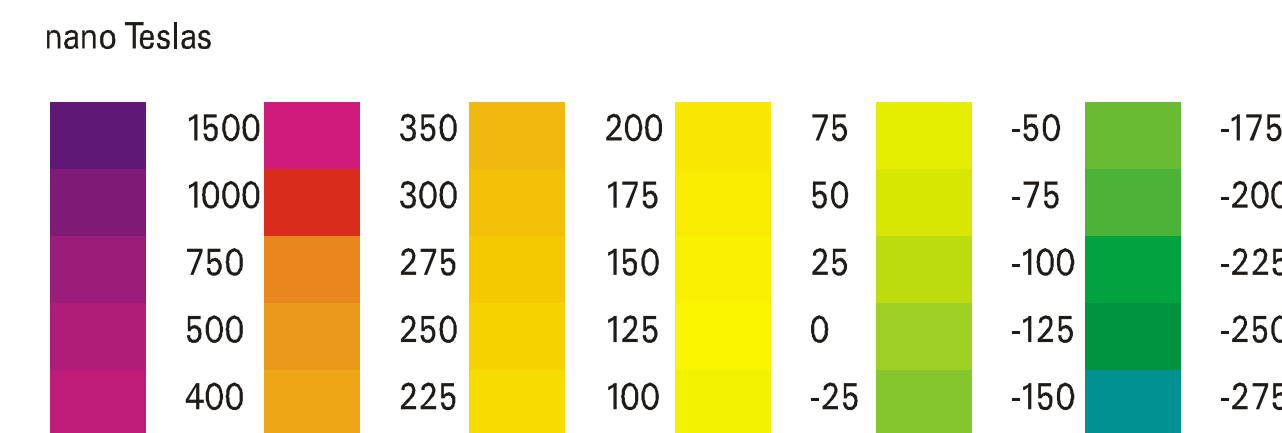


Source: Mineral Access, Geology, Mapping Branch, Alberta Dept. of Energy (May, 1995)

Aeromagnetic Field Anomalies

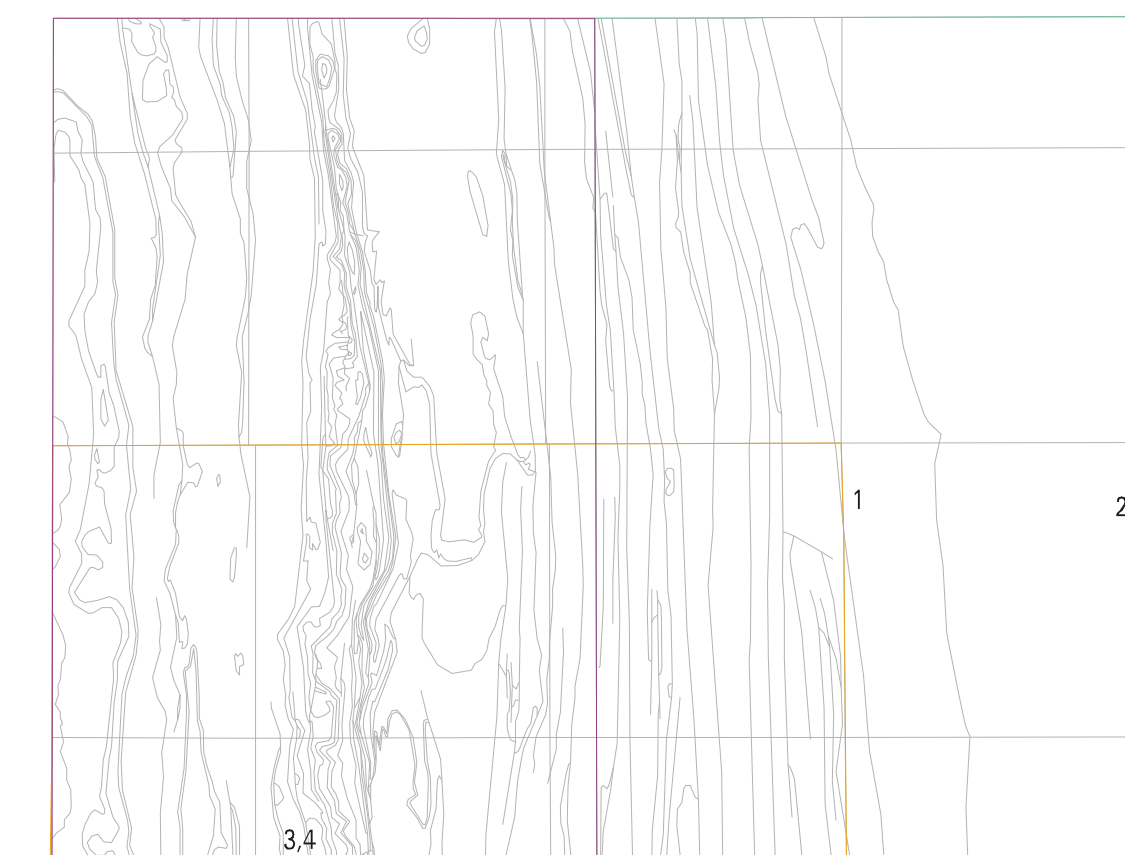


Scale 1:250,000



Source: Geophysical Data Centre, Natural Resources Canada

Index to Specific Reference Documents

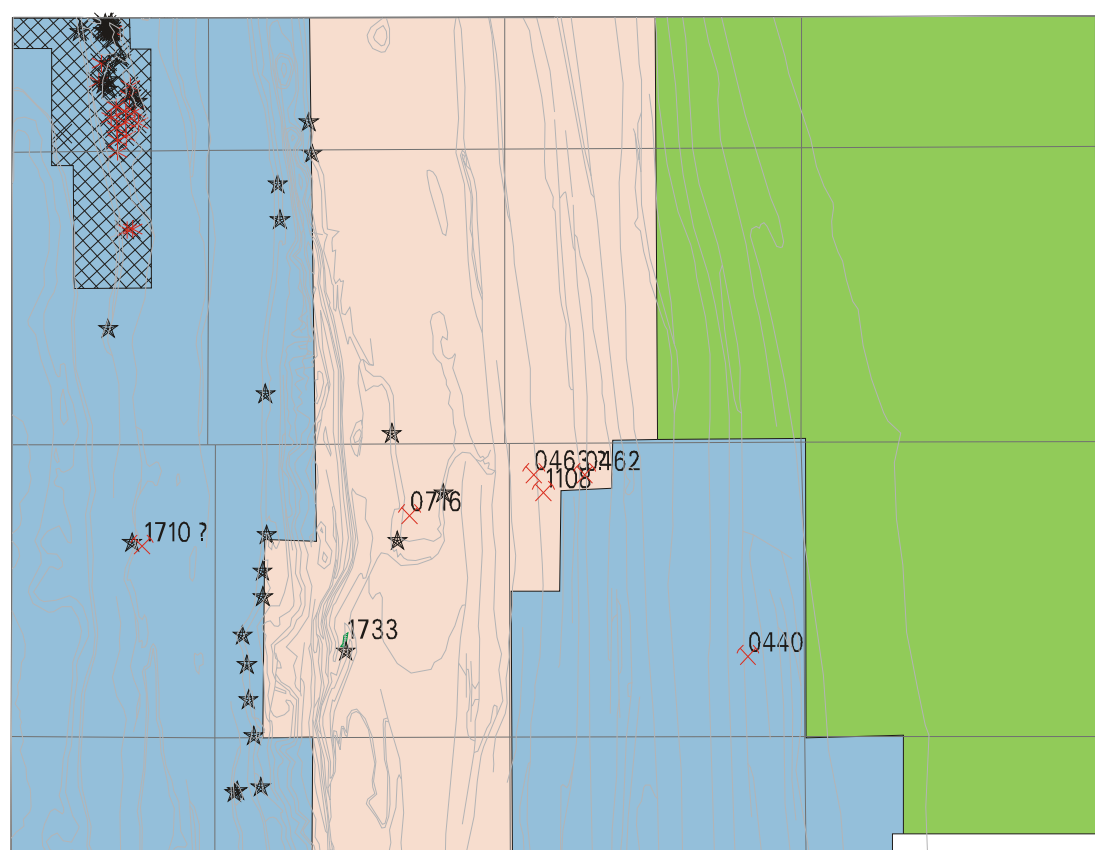


Scale 1:250,000

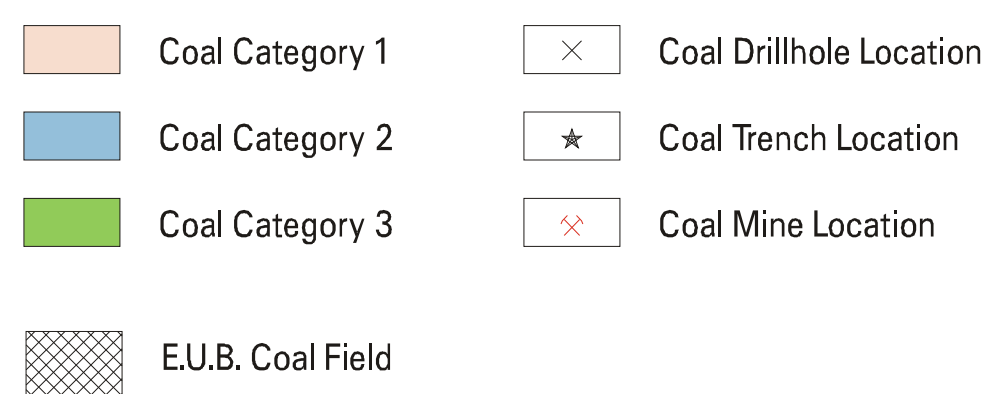
INDEX TO SPECIFIC REFERENCE DOCUMENTS FOR THE MAPSHEET 82G/16

1. Leach, W.W. 1903. The Blairmore-Frank Coal Fields. Geological Survey of Canada - Summary Report for 1902, Volume XV - Part A, Pages 169 to 181; includes Map 808, 'Geological Sketch Map of Part of the Blairmore-Frank Fields', ~ Scale 1:140 000. Outline identified as 1 on the index map.
2. Douglas R.J.W. 1950. Callum Creek, Langford Creek, and Gap Map-Areas, Alberta. Geological Survey of Canada Memoir 255.
3. Douglas R.J.W. and Shaw, G. 1944-45. Callum Creek mapsheet. Geological Survey of Canada Map 982A (82G/16 east half). Scale 1:63 360. Outline identified as 2 on the index map.
4. Douglas R.J.W. 1947. Gap mapsheet. Geological Survey of Canada Map 978A (82G/16 west half). Scale 1:63 360. Outline identified as 3 on the index map.
4. Dawson, F.M. Pre-1992. (Unpublished) Geological Survey of Canada - Institute of Sedimentary and Petroleum Geology, Western Canada Coal Atlas Project: Kootenay Group Pilot Maps 82G/15, 82G/16, 82J/1 and 82J/2. Scale 1:70 000 and 1:35 000. Outline defined as 4 on the index map.

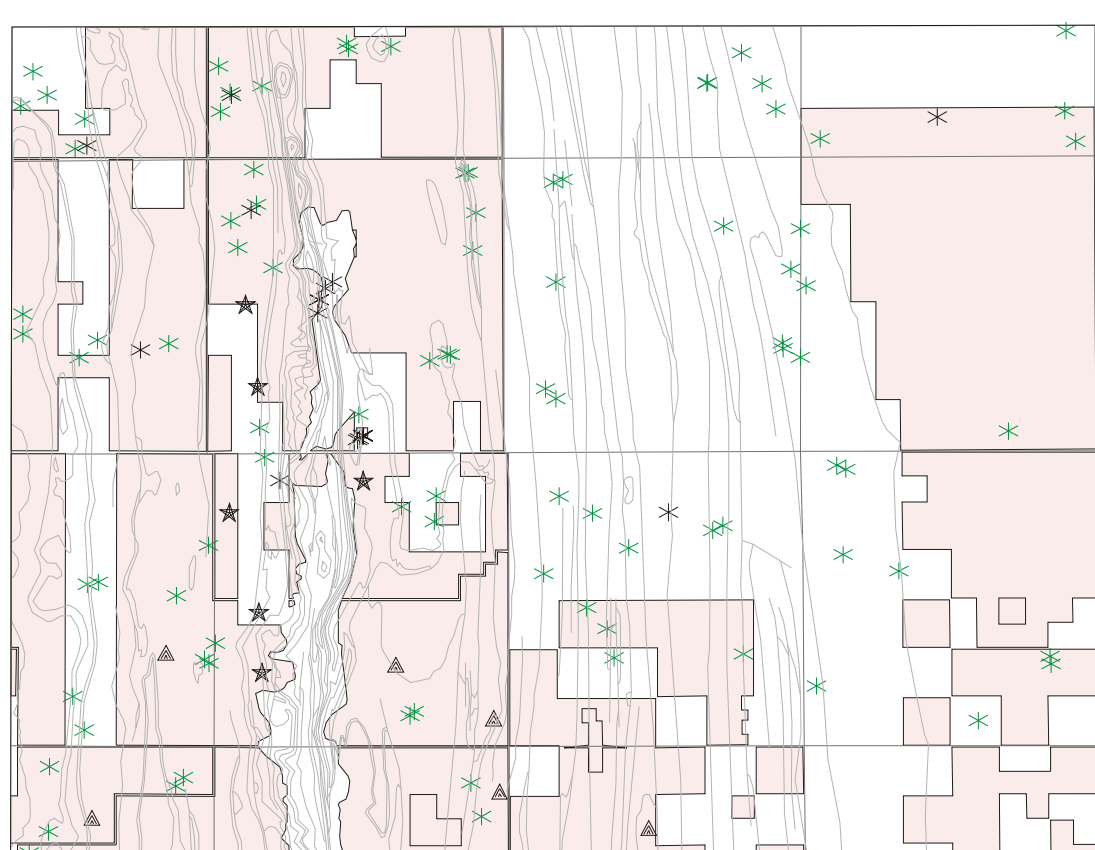
Land Classification for Coal Exploration / Development, and Coal Exploration Data



Scale 1:250,000



Metallic Mineral Permit Areas

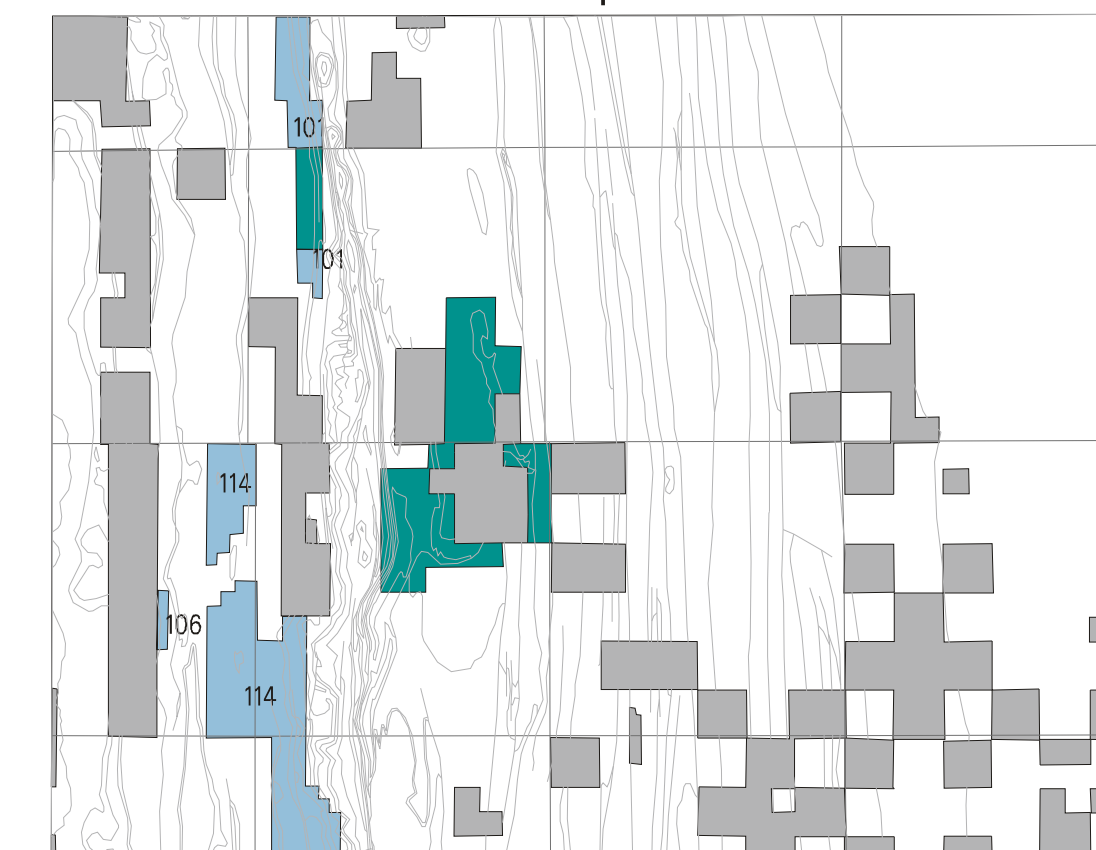


Scale 1:250,000

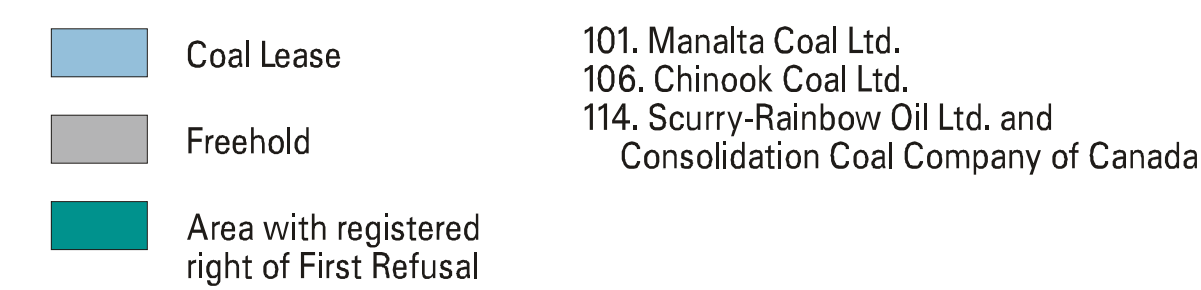


\* Canada-Alberta MDA Project: MDA 93-04-034; ARC Open File Report 1994-7  
 \*\* Mineral Access, Geology, Mapping Branch, Alberta Dept. of Energy (May, 1995)

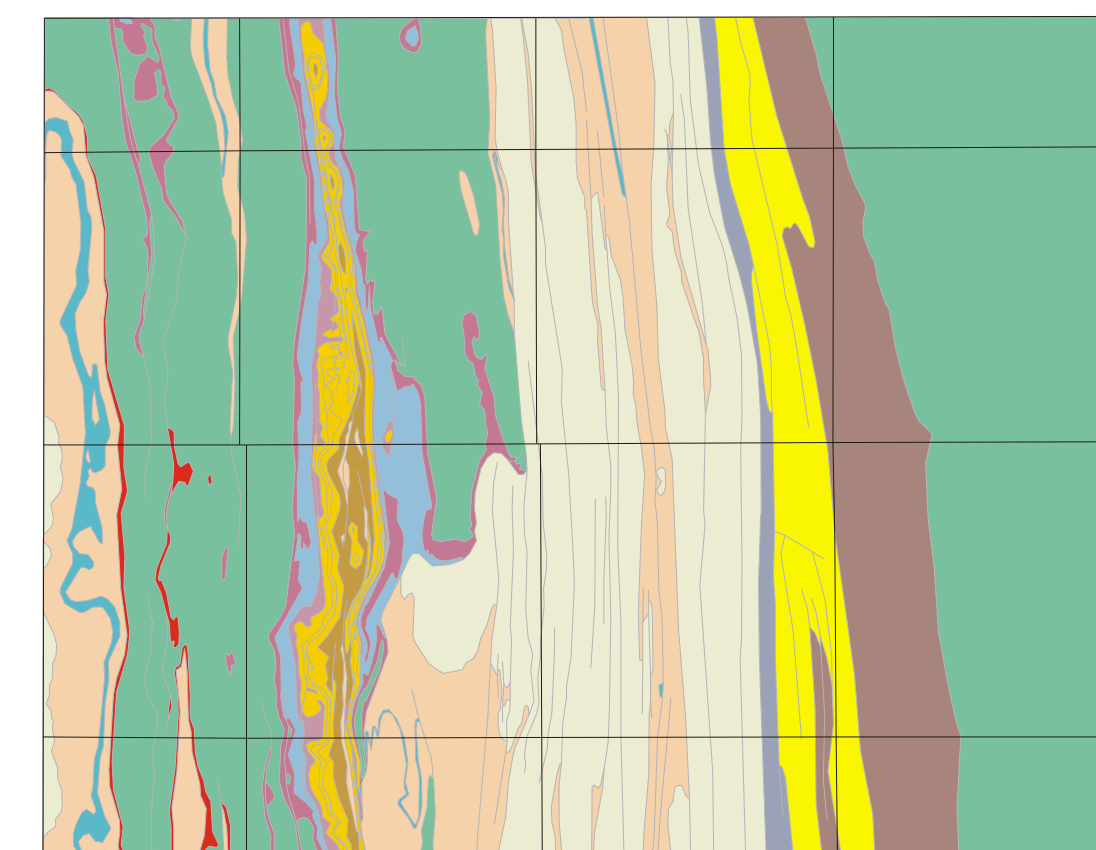
Coal Dispositions



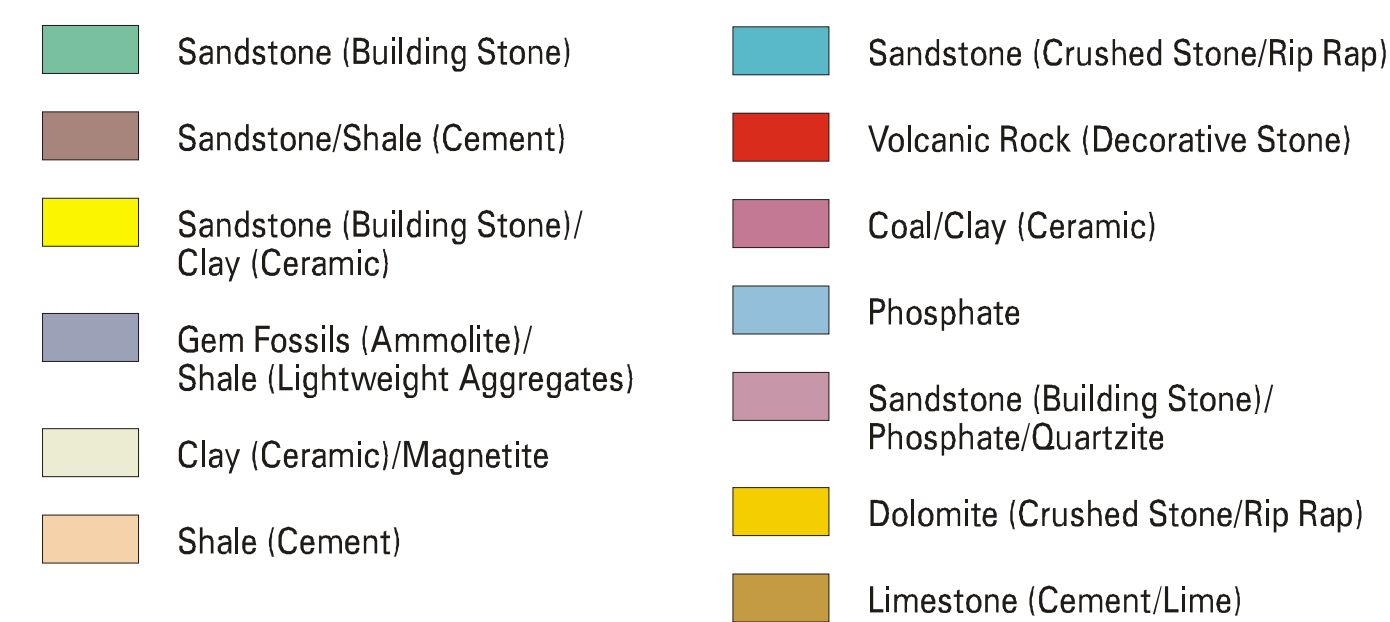
Scale 1:250,000



Near-surface Non-renewable Mineral Resource Potential



Scale 1:250,000



Source: Evaluation by W.N. Hamilton, Alberta Geological Survey

RELIABILITY AND USE

Information relating to this mapsheet has been derived from a number of different sources, scales and formats (digital and hard copy). While every attempt has been made to accurately portray the data, this map is intended to provide a basic compilation and overview of Earth Resources; for more specific informational needs please contact the Land Use Planning and Environmental Management Support Team, Alberta Geological Survey, Alberta Department of Energy, 6th Floor, North Tower, Petroleum Plaza, 9945-108 Street, Edmonton, Alberta, Canada T5K 2G6 (phone: (403)422-1927).

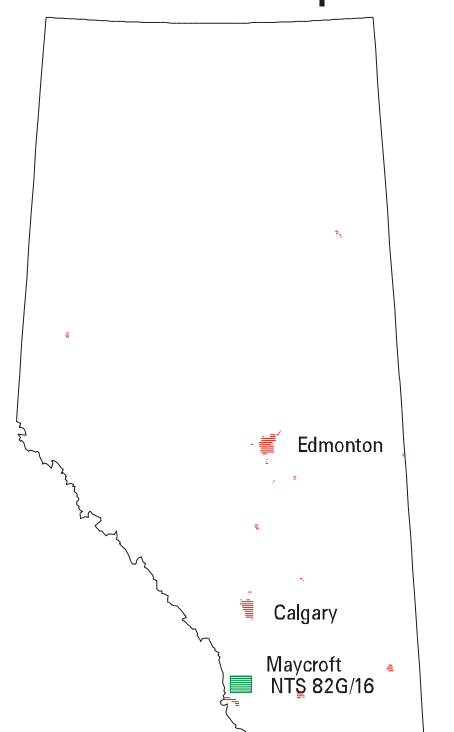
FUNDING

Funds for this project have been provided by the Alberta Department of Energy.

NOTE

The 'Near-surface Non-renewable Mineral Resource Potential Map' is a semiquantitative and subjective evaluation of the mineral resource potential based on limited data, current resource technology and general economic geology factors. CAUTION SHOULD BE EMPLOYED IN THE USE OF THESE ANALYSES! The analyses are based mainly on geological criteria and do not take into account actual economic constraints to development (related to ore grades, reserves, recoverability, accessibility, markets, etc.), now, or in the future.

Location Map



Southern Alberta NATMAP Project  
 Maycroft, Alberta - NTS 82G/16

D.K. Chao, R.J.H. Richardson, D. Fietz\*

Original Compilation: 1995  
 Revised and Released: 1996  
 Alberta Geological Survey Map 230

Map 2 of 2

\* ELAD Enterprises Inc.