

QUATERNARY

RECENT

- E Eolian deposits: sand and silt
- Atd Alluvial terraces: gravel, sand and silt
- AS Alluvial fans: gravel and sand

PLEISTOCENE

- GLACIOLACUSTRINE
- LG Lacustrine deposits: sand, silt and clay
- GLACIOFLUVIAL
- Proglacial deposits*
- AGSt Valley train (high alluvial terrace) deposits: gravel, sand and silt
 - AGS Marginal stream deposits: gravel and sand
 - AG Outwash deposits: gravel and sand
- Ice-contact deposits*
- AGK Kame deposits: gravel, sand and silt
 - AGE Esker deposits: gravel and sand

GLACIAL

- Th Hummocky moraine: till with sporadic lenses of gravel, sand and silt
 - Tr Ground moraine: till with sporadic lenses of gravel, sand and silt
- Th* * should read *Tr*

TERTIARY

Upper Tertiary

- PA Preglacial alluvium: gravel, sand

LITHOLOGIC TYPES

- 1 Sandstone, siltstone and shale (bedrock)
- 2 Gravel
- 3 Sand and gravel
- 4 Sand and silt
- 5 Silt and clay
- 6 Till

Geological boundary: defined, assumed

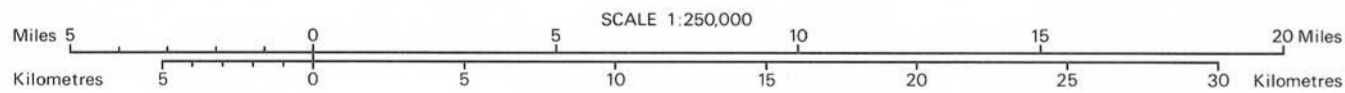
LEGEND

- River or stream
- Intermittent river or stream
- Lake
- Intermittent lake
- Road, hard surface, all weather
- Railway
- Township boundary
- Section line

Sources of Information

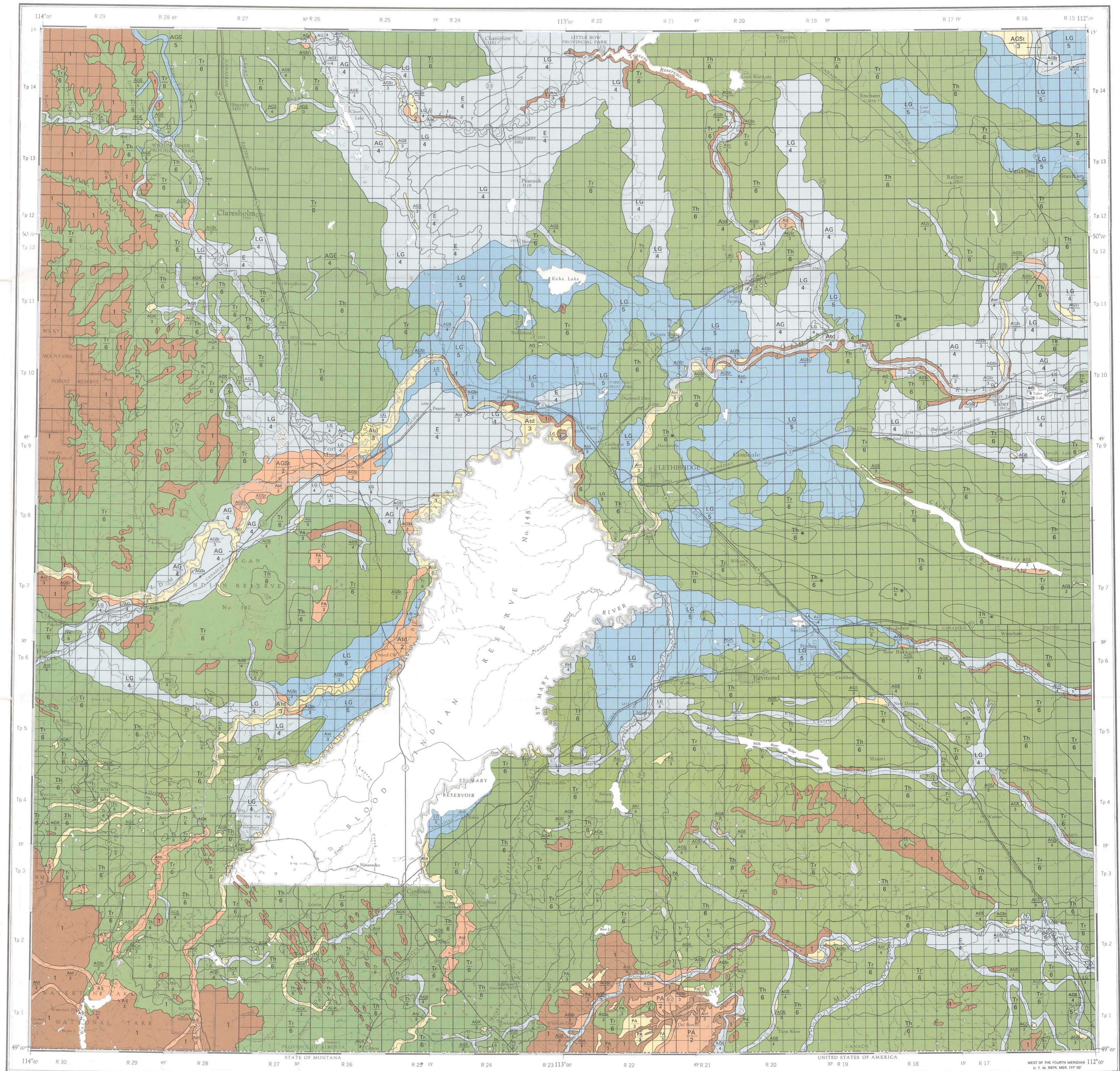
- Surficial geology, High River, Alberta, by A. Mac S. Stalker. Geological Survey of Canada Map No. 14-1-1967
- Surficial geology, Fort MacLeod, Alberta, by A. Mac S. Stalker. Geological Survey of Canada Map No. 21-1-1968
- Surficial geology, Lethbridge, Alberta, by A. Mac S. Stalker. Geological Survey of Canada Map No. 41-1-1962
- Surficial geology, Bassano, Alberta, by A. Mac S. Stalker. Geological Survey of Canada Map No. 5-1965.
- Surficial geology map of the Vauxhall District, Alberta, by L.A. Bayrock and J.F. Jones. Alberta Research Council Preliminary Report 63-2.

Compiled by I. Shetsen



SURFICIAL GEOLOGY
LETHBRIDGE
ALBERTA

NTS 82 H, 82 I



Cartography by A.R.C. Drafting Services

Published 1981