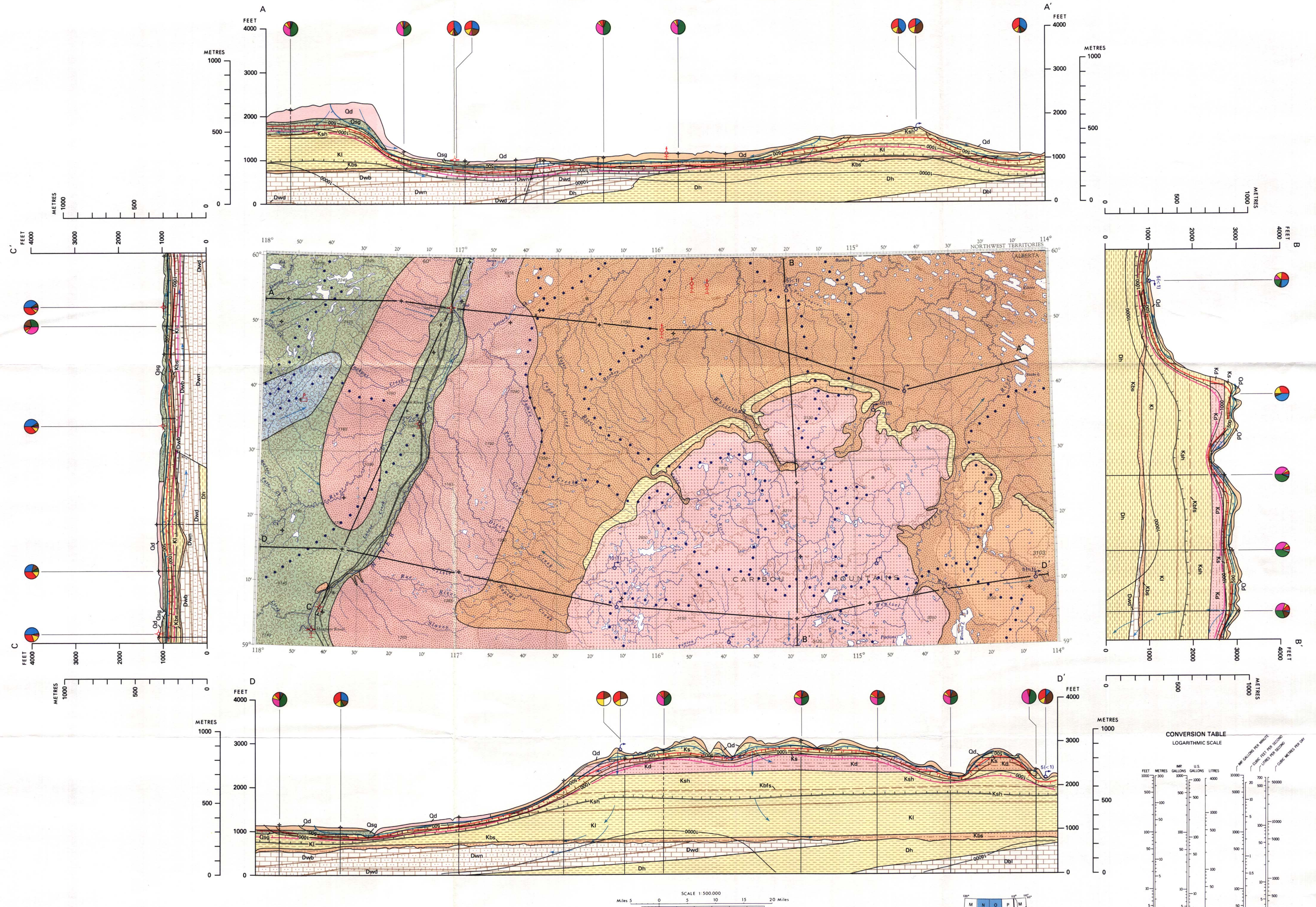


MAIN MAP LEGEND

- Topography**  
Surface contours and elevation in feet (interval 500 feet)
- Geology**  
Geological boundary
- QUATERNARY**  
Qd Unconsolidated deposit  
Qsg Sand and gravel
- CRETACEOUS**  
Ks Smoky Group  
Kd Dunvegan Formation  
Kah Shaftesbury Formation  
Kbfs Base of the Fish Scales  
Kl Loon River Formation  
Kbs Bluesky and Gething Formations
- DEVONIAN**  
Dwb Wabamun Group  
Dwn Winterburn Group  
Dwd Woodbend Group (except Hay River and Ireton Formations)  
Dh Hay River and Ireton Formations  
Dbli Beaverhill Lake and Slave Point Formations
- Lithology**  
Sand and gravel  
Gravel  
Sandstone  
Sand and Silt  
Sandstone and Shale  
Shale  
Limestone  
Silty Limestone
- HYDROGRAPHY**  
Lake or Slough, perennial  
Lake or Slough, seasonal  
Marsh, Muskeg  
Stream, perennial  
Stream, intermittent  
Surface, water divide
- HYDROGEOLOGY**  
Spring, flow rate known, lpm (L/d)  
Spring, flow rate unknown  
Direction of Groundwater Flow
- Groundwater Probability**  
Range of average expected yield of wells in imperial gallons per minute (L/s)  
Possible: estimated from qualitative information (Flow regime, lithology, etc.)  
100-500 (8-38)  
25-100 (2-8)  
5-25 (0.4-2)  
1-5 (0.1-0.4)  
< 1 (0.1)
- WELLS AND OTHER ARTIFICIAL WORKS**  
Depth Scale  
Water Well, nonflowing  
Seismic shot hole reported to have flowed  
Water Well, with estimates of safe yield and apparent transmissivity  
Abandoned oil or gas well  
Structure test hole  
Suspended well, oil or gas  
Dugout or borrow pit (permanent)  
Depth of testhole
- HYDROCHEMISTRY**  
Note: When the yellow Mg pie sector is absent, Ca & Mg are represented as a unit by the red pie sector  
Total dissolved solids in parts per million  
Isogram along which calcium + magnesium constitute 60 percent of total cations; teeth indicate direction of lesser calcium + magnesium content  
Isogram along which sodium + potassium constitute 60 percent of total cations; teeth indicate direction of less sodium + potassium content  
Isogram along which carbonate + bicarbonate constitute 60 percent of total anions; teeth indicate direction of lesser carbonate + bicarbonate content  
Isogram along which sulfate constitutes 60 percent of total anions; teeth indicate direction of lesser sulfate content  
Isogram along which chloride constitutes 60 percent of total anions; teeth indicate direction of lesser chloride content  
\*determined on equivalents per million basis

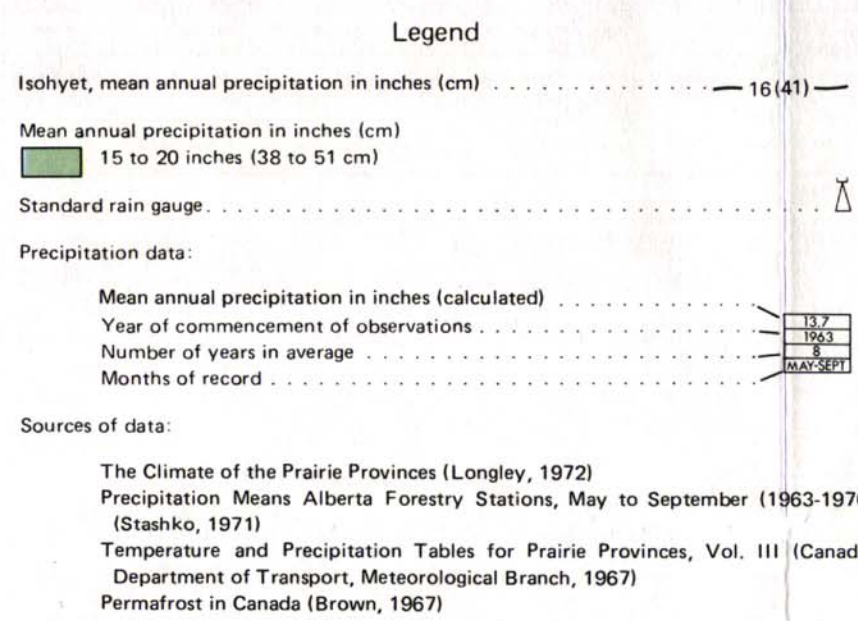
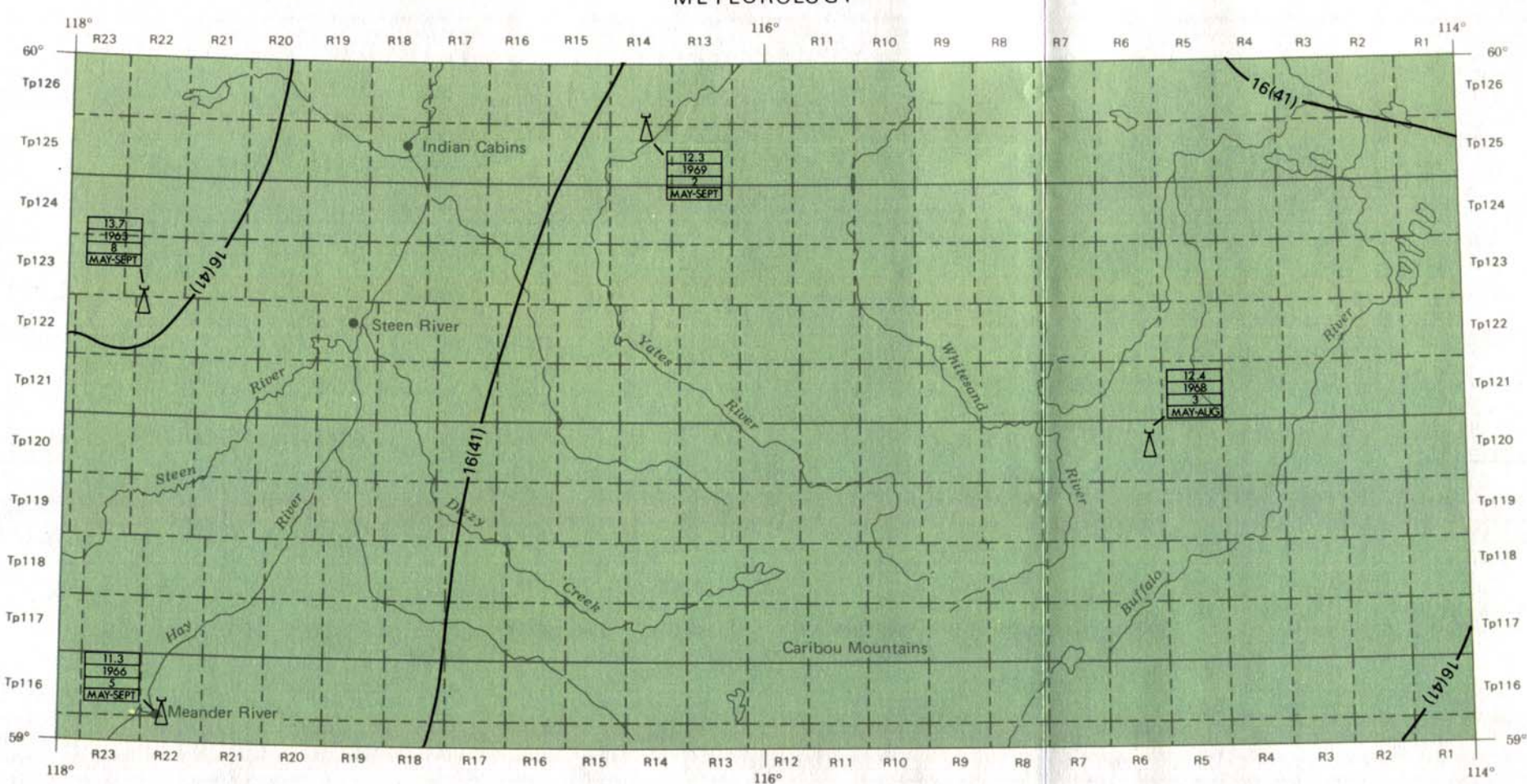


HYDROGEOLOGICAL MAP  
STEEN RIVER-WHITESAND RIVER  
ALBERTA

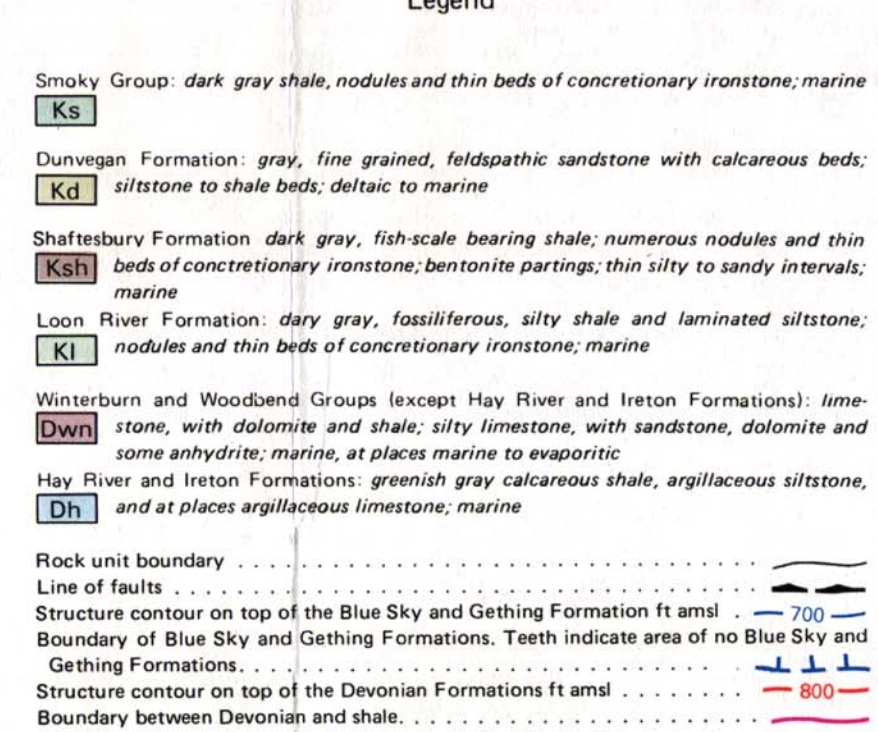
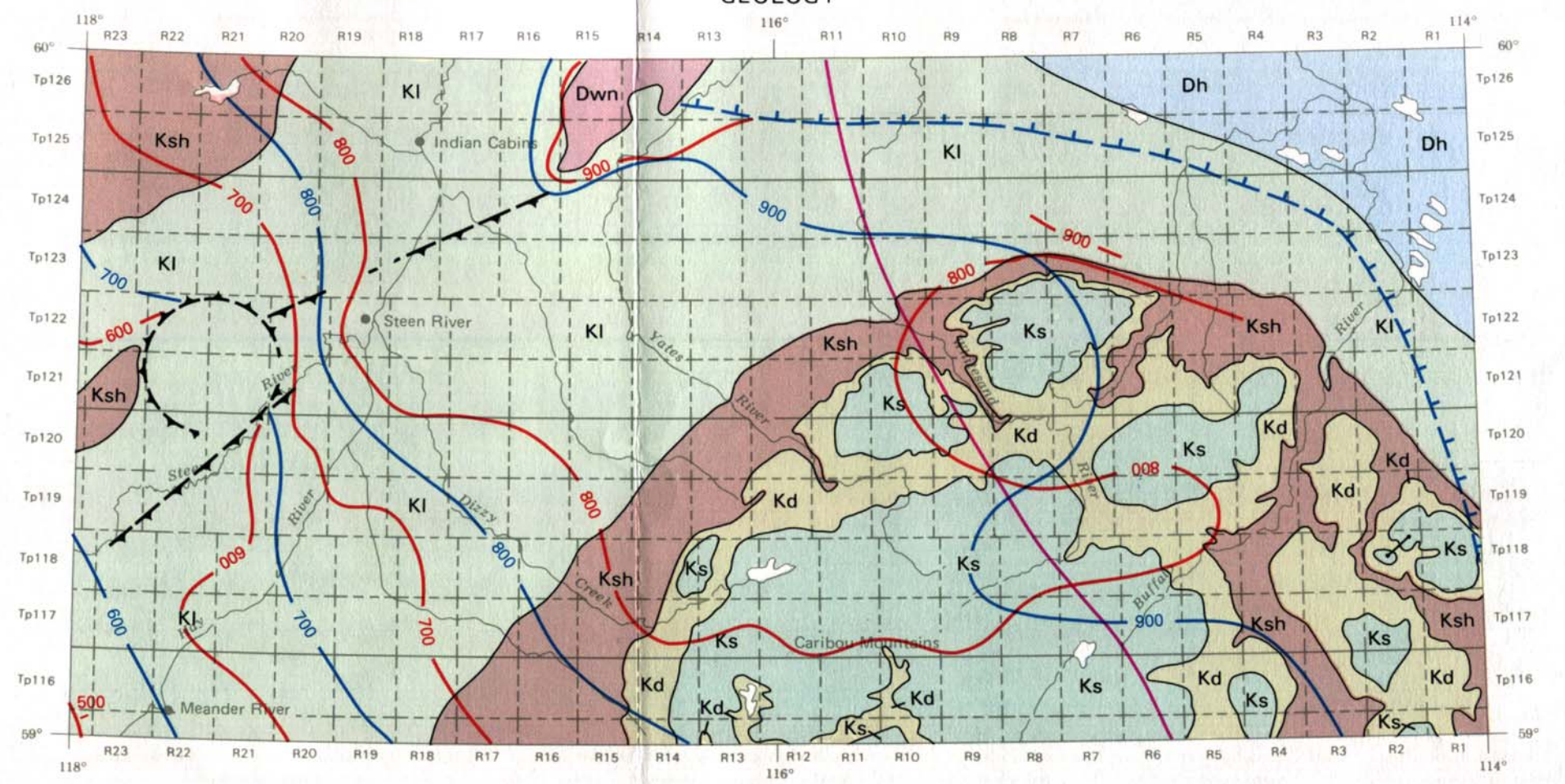
NTS 84N-84O

All elevations in feet above sea level  
Vertical exaggeration of the hydrogeological profiles is approximately 40X  
An expanded legend and explanatory notes (Earth Sciences Report 72-121) for use with this hydrogeological map series is available from Alberta Research Council, Edmonton, Canada  
Map to accompany Earth Sciences Report 80-2  
Hydrogeology by G.F. Ozoray  
Drafted by R.W. Swenson

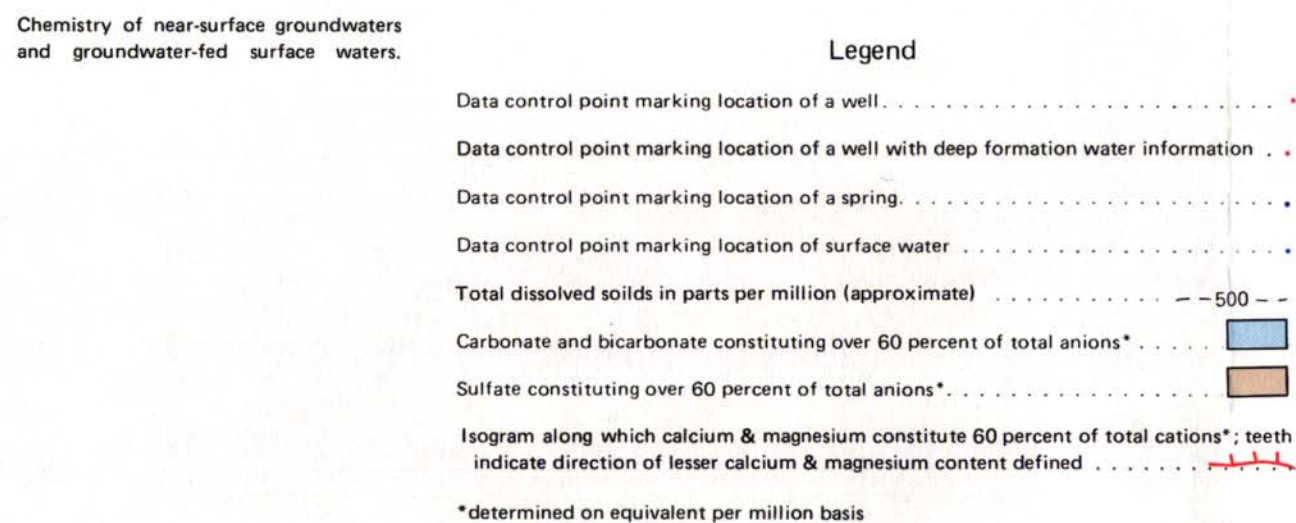
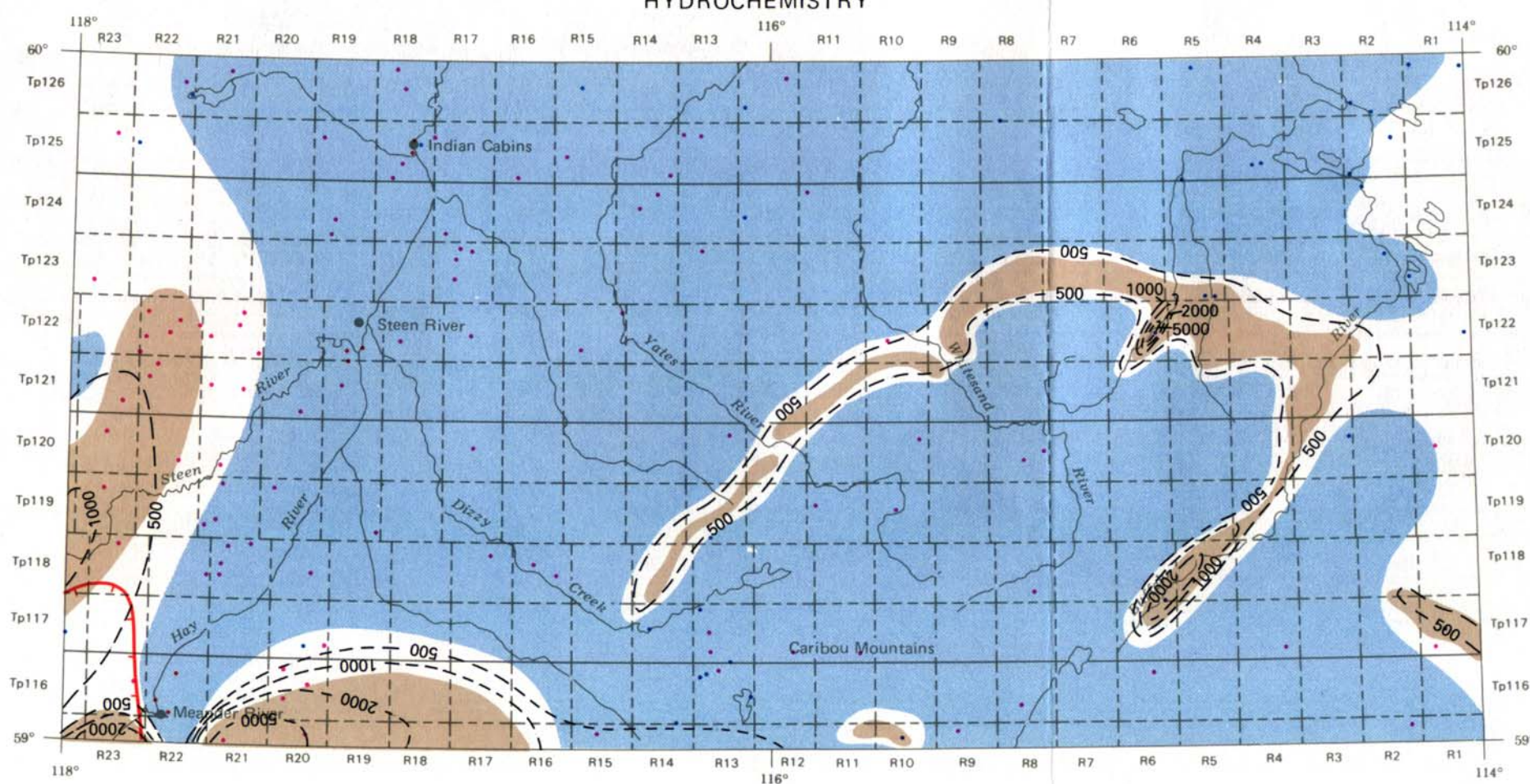
METEOROLOGY



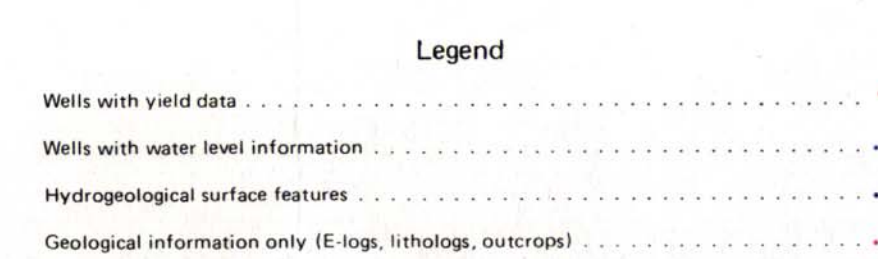
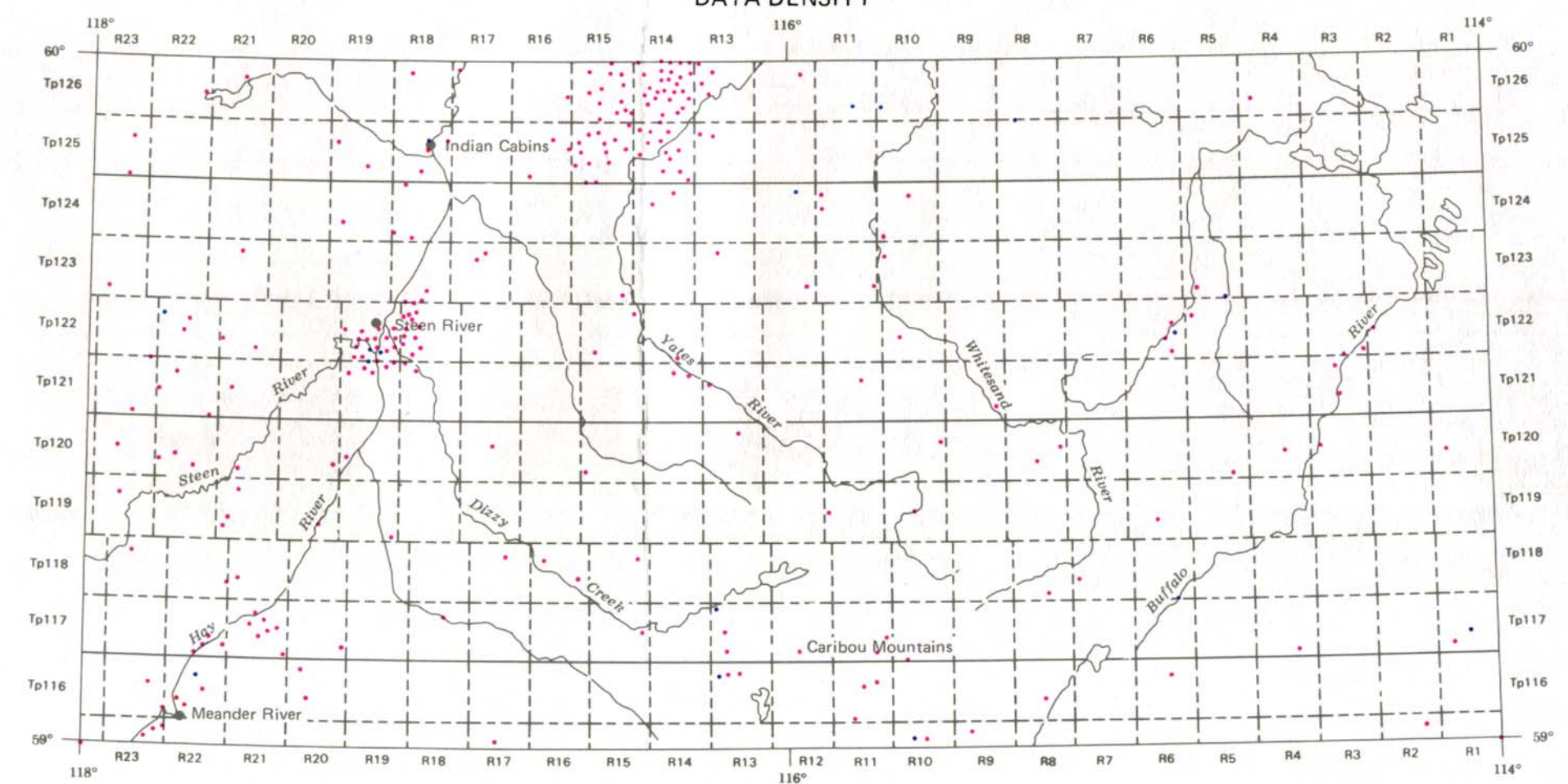
GEOLOGY



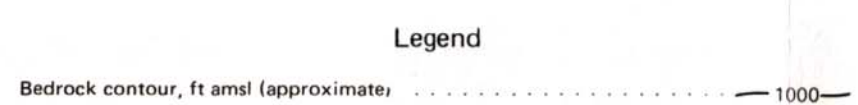
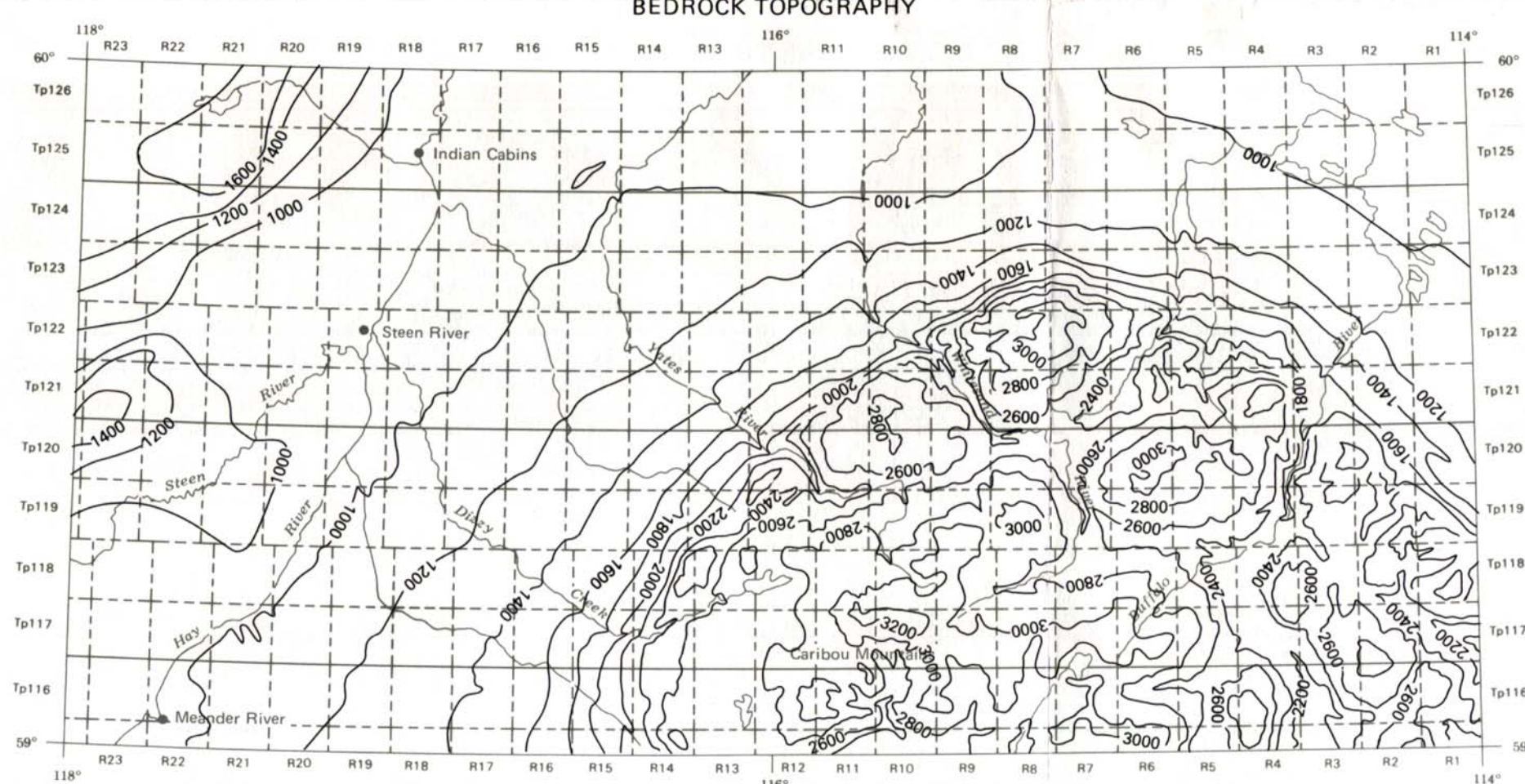
HYDROCHEMISTRY



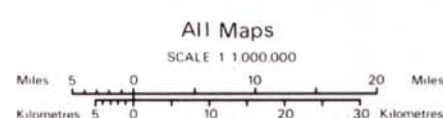
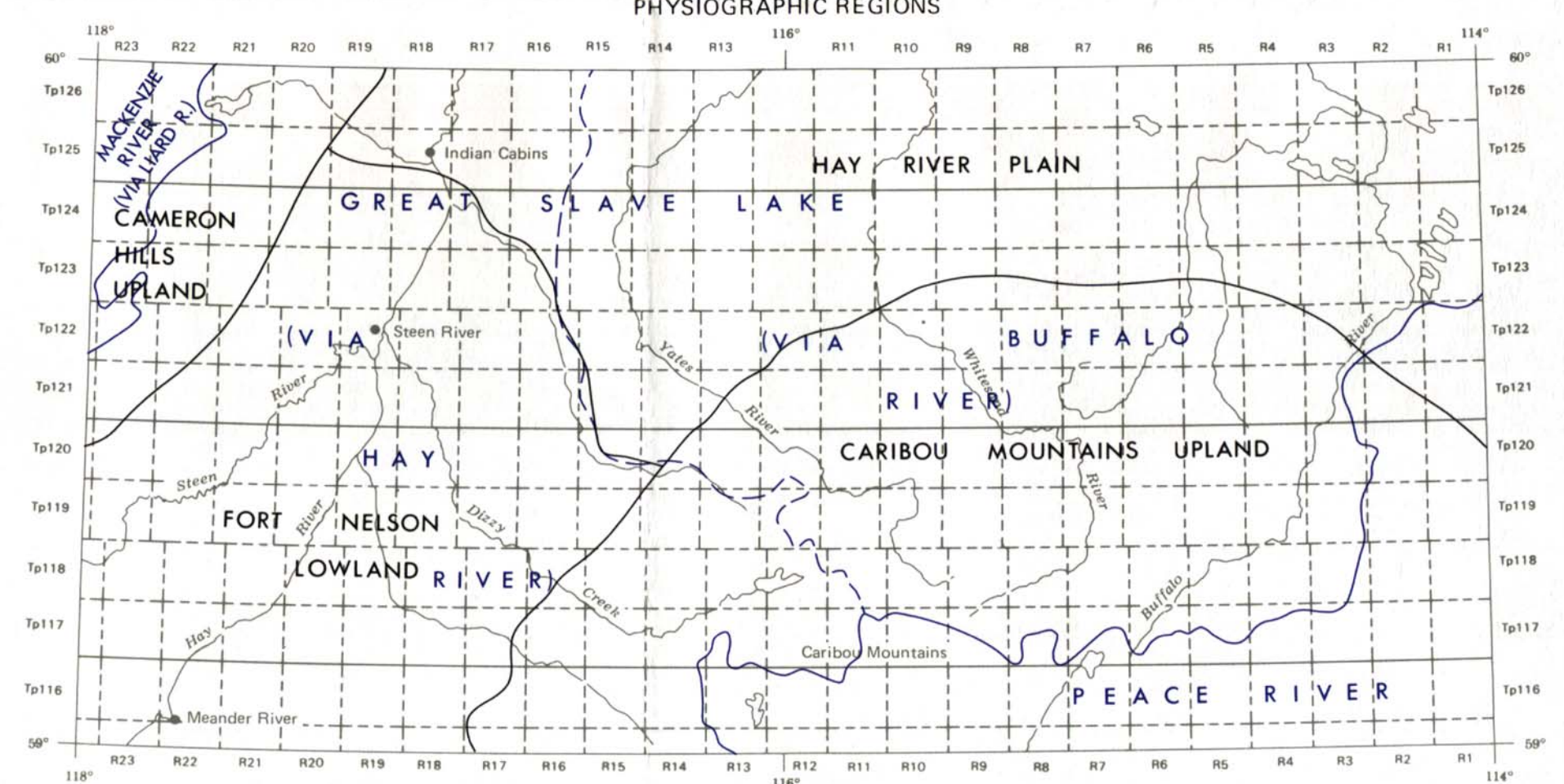
DATA DENSITY



BEDROCK TOPOGRAPHY



MAIN DRAINAGE BASINS AND PHYSIOGRAPHIC REGIONS



HYDROGEOLOGICAL MAP  
STEEN RIVER-WHITESAND RIVER  
ALBERTA  
NTS 84N+84O