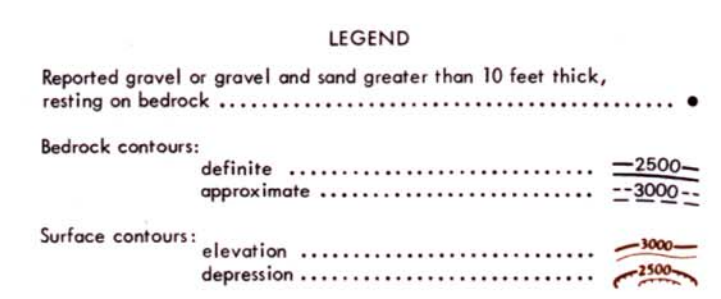
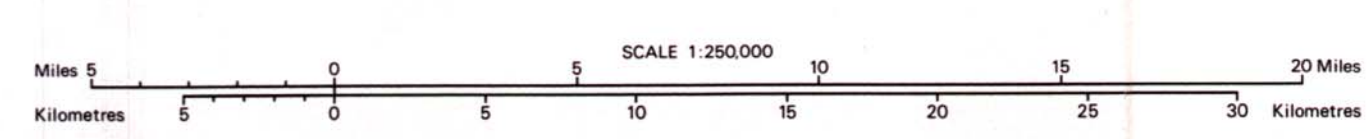


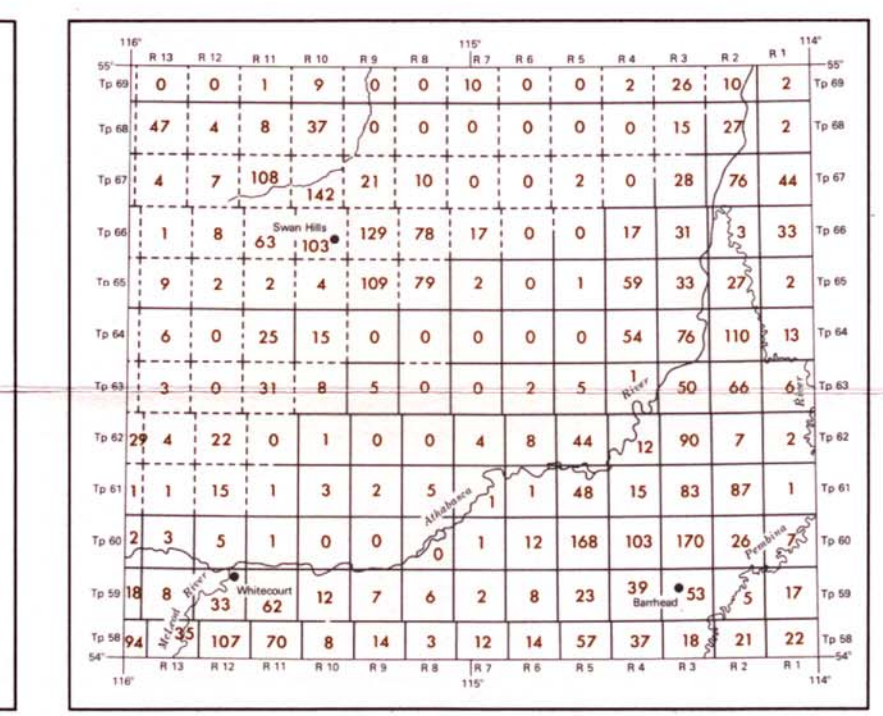
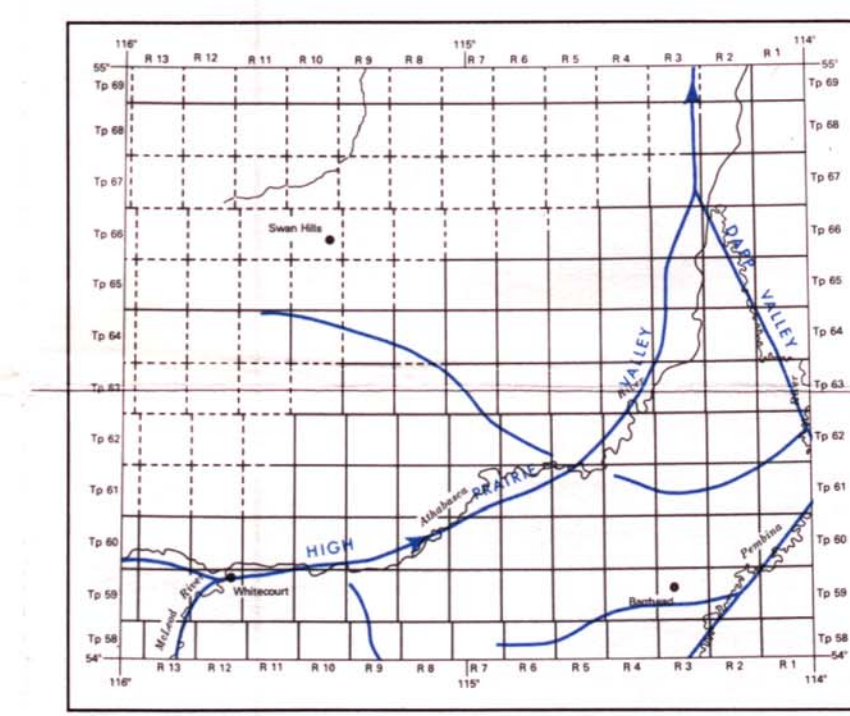
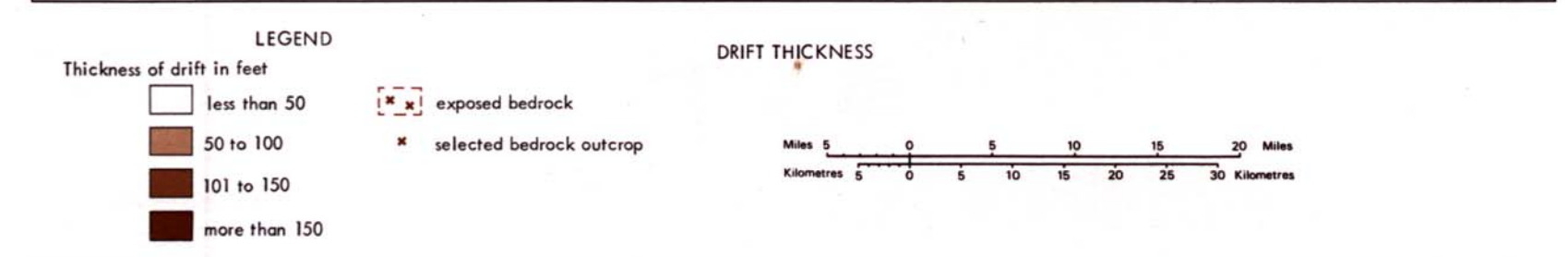
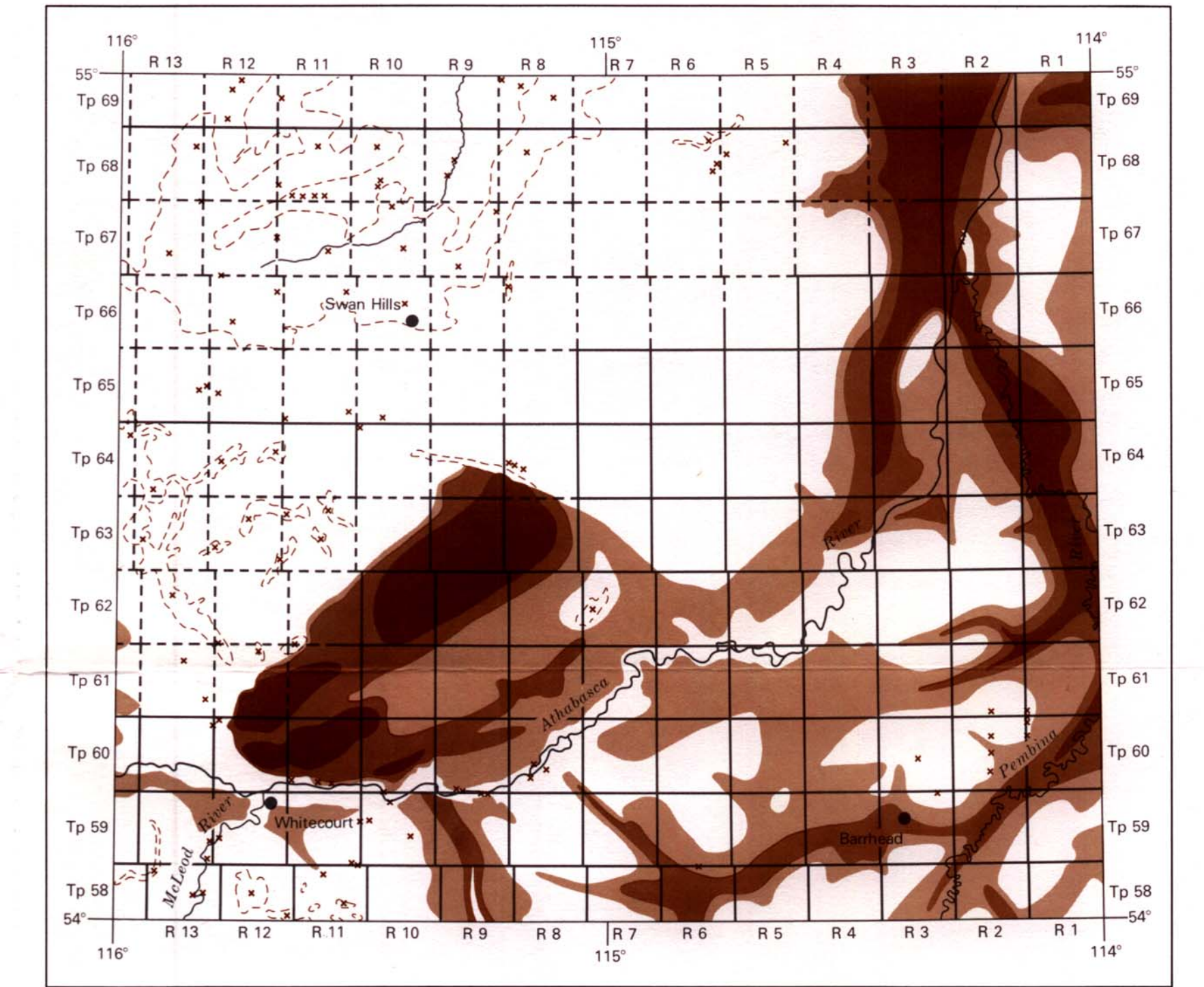
Base map provided by the Surveys and Mapping Branch,
 Department of Energy, Mines and Resources, Ottawa
 Date Compilation: J. Orlecky
 Drafting: M.J. Fisher
 Cartographic editing: A.K. Campbell

BEDROCK TOPOGRAPHY OF THE WHITECOURT AREA, NTS 83J, ALBERTA

WEST OF FIFTH MERIDIAN



Published 1977



For bedrock valleys interpreted to be preglacial
 Number of logs in each township and range 23



Bedrock topography by V.A. Carlson, 1972; revised by R. Green, 1976

Acknowledgments and Notes

Shothole logs were the primary source of data used in compiling the bedrock topography and drift thickness maps. The following companies supplied these data and it is a pleasure to acknowledge their cooperation: Aquitaine Company of Canada Ltd., Canadian Superior Oil Ltd., Chevron Standard Ltd., Home Oil Company Ltd., Mobil Oil Canada Ltd., Shell Canada Ltd., Texaco Canada Ltd.

Testhole logs of Manalta Coal Ltd. were most useful, as were logs submitted by water well drilling contractors.

The areas of bedrock at or close to the surface in the Swan Hills area and south of Whitecourt are extracted from the map of St. Onge (1973). Individual bedrock outcrop locations shown in the remainder of the area are obtained mainly from unpublished Research Council information.

Locations of holes recording gravel resting on bedrock are not shown for the Swan Hills area, which has extensive hill cappings of gravel, and also widespread log deposits, particularly on the southern hill slopes.

Reference

St. Onge, D.A. (1973): Surficial Geology, Whitecourt; Geol. Surv. Canada Map 1367A.

