

TO ACCOMPANY RESEARCH COUNCIL REPORT 66-3

Scale 1:50,000



FIGURE 2A
BEDROCK TOPOGRAPHY,
EDMONTON DISTRICT, ALBERTA

WEST OF FOURTH MERIDIAN

BASE MAP COMPILED FROM NATIONAL TOPOGRAPHIC SERIES SHEET 83H/12
 DEPARTMENT OF MINES AND TECHNICAL SURVEYS OTTAWA

LEGEND

Bedrock contour:
 definite **2200**
 approximate **2200**
 (Contour interval 25 feet)

Gravel deposit on bedrock:
 2-5 feet thick
 6-15 feet thick
 over 15 feet thick

Sand and gravel on bedrock:
 5-10 feet thick
 11-30 feet thick
 over 30 feet thick

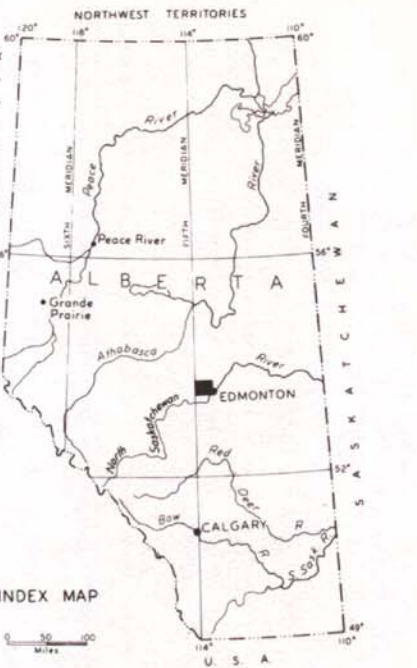
Sand deposit on bedrock:
 5-10 feet thick
 11-30 feet thick
 over 30 feet thick

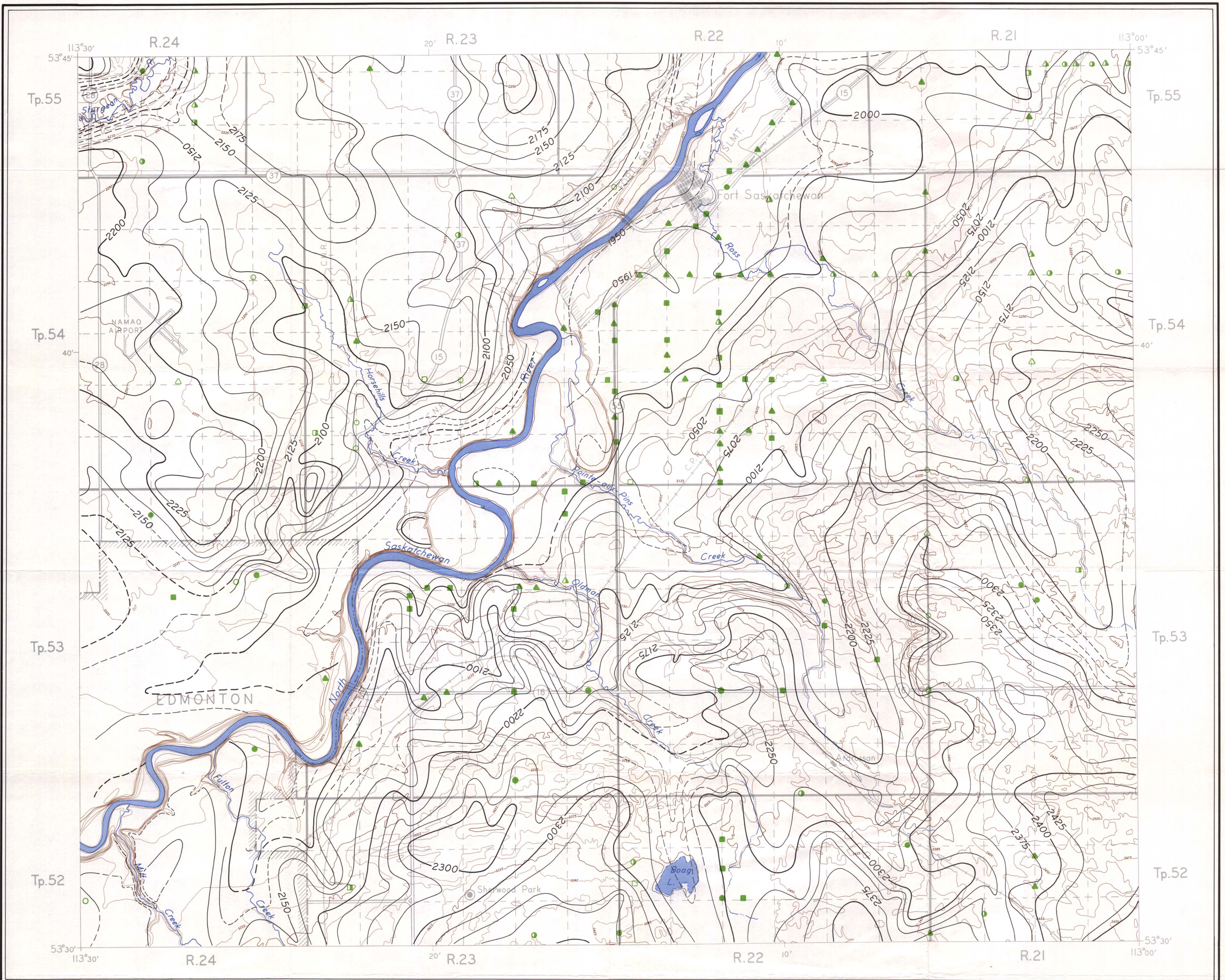
Subdivision of a Township into Sections

1	2	3	4	5	6	7	8
9	10	11	12	13	14	15	16
17	18	19	20	21	22	23	24
25	26	27	28	29	30	31	32
33	34	35	36	37	38	39	40

Subdivision of a Section into Legal Subsections (1/50)

1	2	3	4	5	6	7	8
9	10	11	12	13	14	15	16
17	18	19	20	21	22	23	24
25	26	27	28	29	30	31	32
33	34	35	36	37	38	39	40





TO ACCOMPANY RESEARCH COUNCIL REPORT 66-3

BASE MAP COMPILED FROM NATIONAL TOPOGRAPHIC SERIES SHEET 83H/11
DEPARTMENT OF MINES AND TECHNICAL SURVEYS OTTAWA

Scale 1:50,000

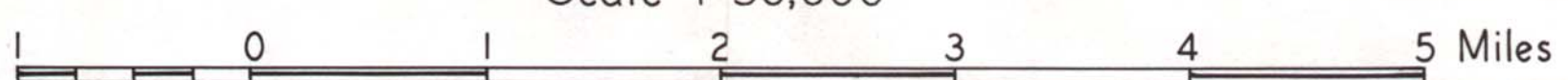


FIGURE 2B
BEDROCK TOPOGRAPHY,
EDMONTON DISTRICT, ALBERTA
WEST OF FOURTH MERIDIAN

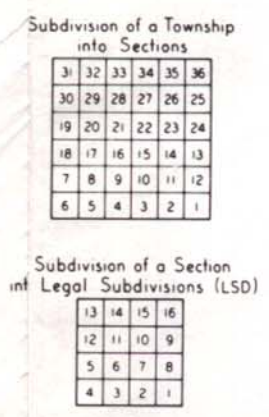
LEGEND

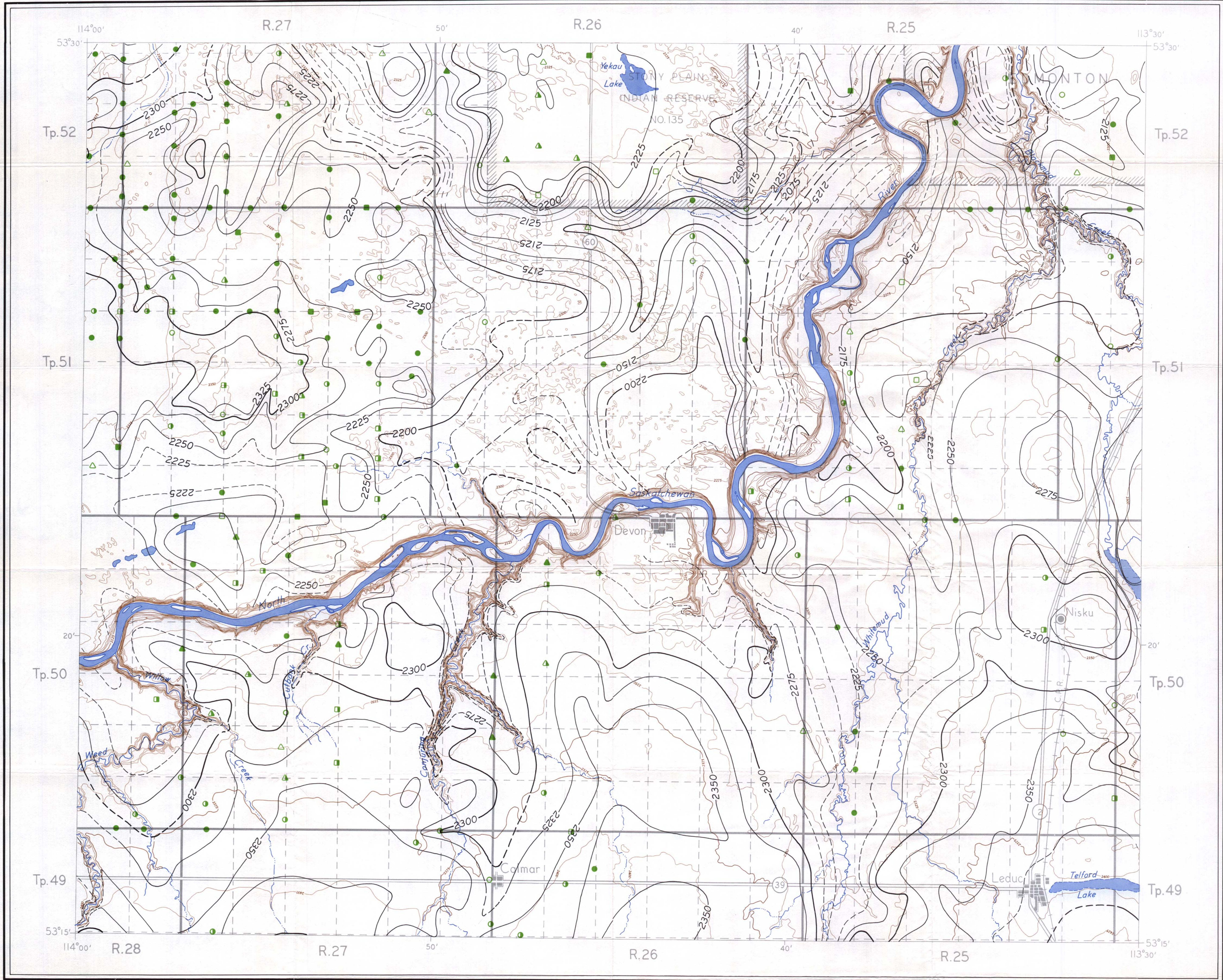
Bedrock contour:
definite 2200
approximate 2200
(Contour interval 25 feet)

Gravel deposit on bedrock:
 2-5 feet thick
 6-15 feet thick
 over 15 feet thick

Sand and gravel on bedrock:
 5-10 feet thick
 11-30 feet thick
 over 30 feet thick

Sand deposit on bedrock:
 5-10 feet thick
 11-30 feet thick
 over 30 feet thick





TO ACCOMPANY RESEARCH COUNCIL REPORT 66-3

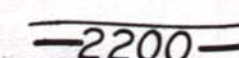
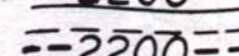
Scale 1:50,000

BASE MAP COMPILED FROM NATIONAL TOPOGRAPHIC SERIES SHEET 83H/5
DEPARTMENT OF MINES AND TECHNICAL SURVEYS, OTTAWA



FIGURE 2C
BEDROCK TOPOGRAPHY,
EDMONTON DISTRICT, ALBERTA
WEST OF FOURTH MERIDIAN

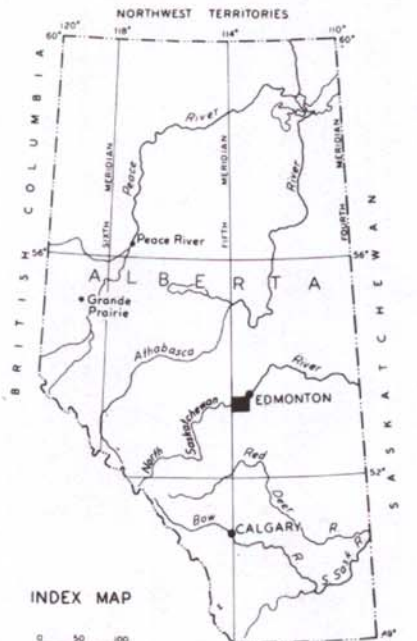
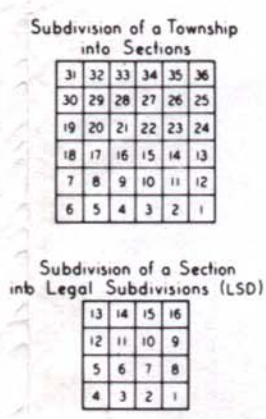
LEGEND

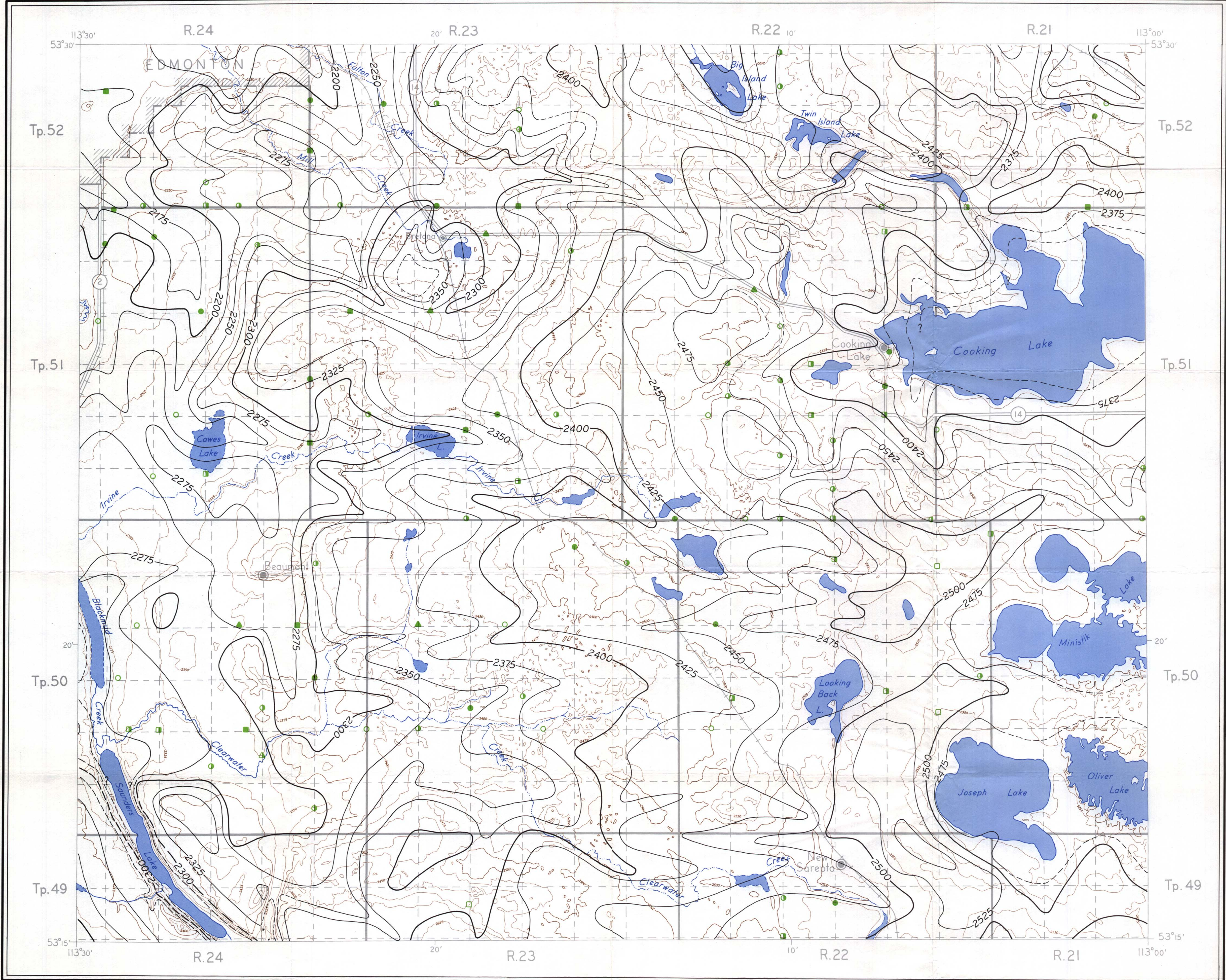
Bedrock contour:
definite  2200
approximate  2200
(Contour interval 25 feet)

Gravel deposit on bedrock:
△ 2-5 feet thick
▲ 6-15 feet thick
▲ over 15 feet thick

Sand and gravel on bedrock:
□ 5-10 feet thick
□ 11-30 feet thick
■ over 30 feet thick

Sand deposit on bedrock:
○ 5-10 feet thick
○ 11-30 feet thick
● over 30 feet thick





TO ACCOMPANY RESEARCH COUNCIL REPORT 66-3

Scale 1:50,000



FIGURE 2D
BEDROCK TOPOGRAPHY,
EDMONTON DISTRICT, ALBERTA
 WEST OF FOURTH MERIDIAN

BASE MAP COMPILED FROM NATIONAL TOPOGRAPHIC SERIES SHEET 83M/6
 DEPARTMENT OF MINES AND TECHNICAL SURVEYS, OTTAWA

LEGEND

Bedrock contour:
 definite 2200
 approximate 2200
 (Contour interval 25 feet)

Gravel deposit on bedrock:
 2-5 feet thick
 6-15 feet thick
 over 15 feet thick

Sand and gravel on bedrock:
 5-10 feet thick
 11-30 feet thick
 over 30 feet thick

Sand deposit on bedrock:
 5-10 feet thick
 11-30 feet thick
 over 30 feet thick

