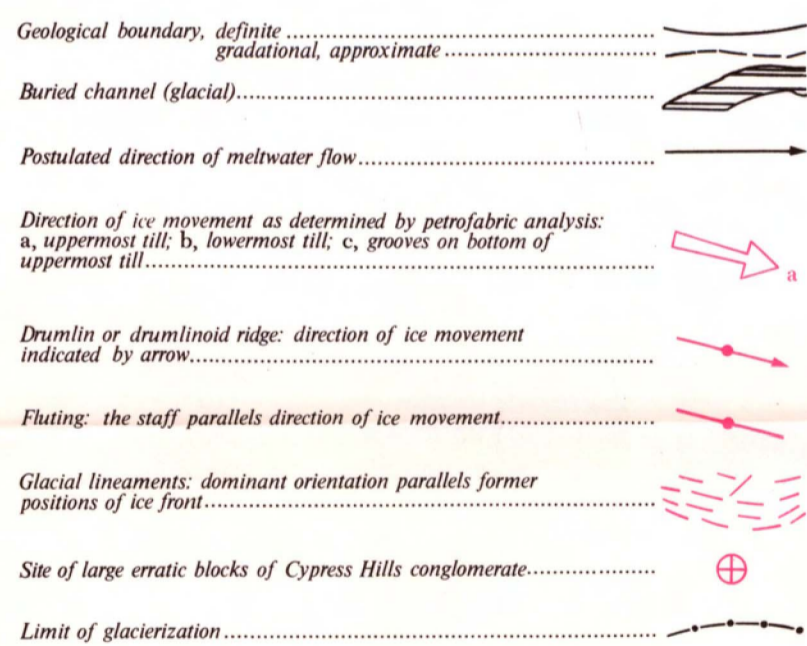




QUATERNARY LEGEND

- RECENT**
- 18 Aeolian deposits: sand and silt; parabolic dunes; blow outs.
- PLEISTOCENE AND RECENT**
- 17 Eroded slope: mainly bedrock; some colluvium; extensive slumping. (Also present along meltwater channels and recent valleys but not indicated on map.)
- PLEISTOCENE**
- GLACIO-LACUSTRINE**
- 16 Lacustrine sediments: sand, silt and clay; thin, generally less than 10 feet thick; till in places. 16a, lacustrine silt over hummocky and ridged end moraine.
  - 15 Lacustrine sediments: sand, silt and clay; some gravel; in places covered by recent lacustrine sediment and alluvium. 15a, deltaic sediments: gravel and sand.
- GLACIO-FLUVIAL**
- 14 Undifferentiated outwash gravel, sand and till; bedrock exposed in places.
  - 13 Outwash and alluvium: gravel and sand; some silt.
  - 12 Outwash: gravel and sand on Cypress Hills Formation; large Laurentian erratics present, including dolomite.
  - 11 Meltwater channel sediments: gravel, sand, silt and clay; terraces present and lower parts covered by recent alluvium, colluvium and lacustrine sediment.
  - 10 Eroded plains: in parts scoured by meltwater; till, gravel, sand, silt and clay; bedrock exposures common; extensive badland.
  - Esker: gravel and sand.
  - 8 Kame: gravel and sand.
- AEOLIAN**
- 7 Loess: unconsolidated sand, silt and clay overlying bedrock; generally less than 5 feet thick; slightly deformed by frost action; bedrock exposures common on southern slope of Cypress Hills; unglaciated.
- GLACIAL**
- 6 Bedrock upland veneered with till; some gravel and sand in places.
  - 5 Patches of glacial drift: includes Laurentide erratics; resting on bedrock.
  - 4 Hummocky and ridged end moraine: mainly till; some gravel and sand; aligned knobs; linear and closed disintegration ridges; large to medium local relief.
  - 3 Washboard moraine: mainly till; aligned ridges; small local relief - less than 10 feet.
  - 2 Hummocky disintegration moraine: mainly till; knobs, closed and linear disintegration ridges; large to medium local relief.
  - 1 Ground moraine: mainly till - unsorted rocks, sand, silt and clay; patches of lacustrine and outwash sand, silt and clay; local relief less than 10 feet.

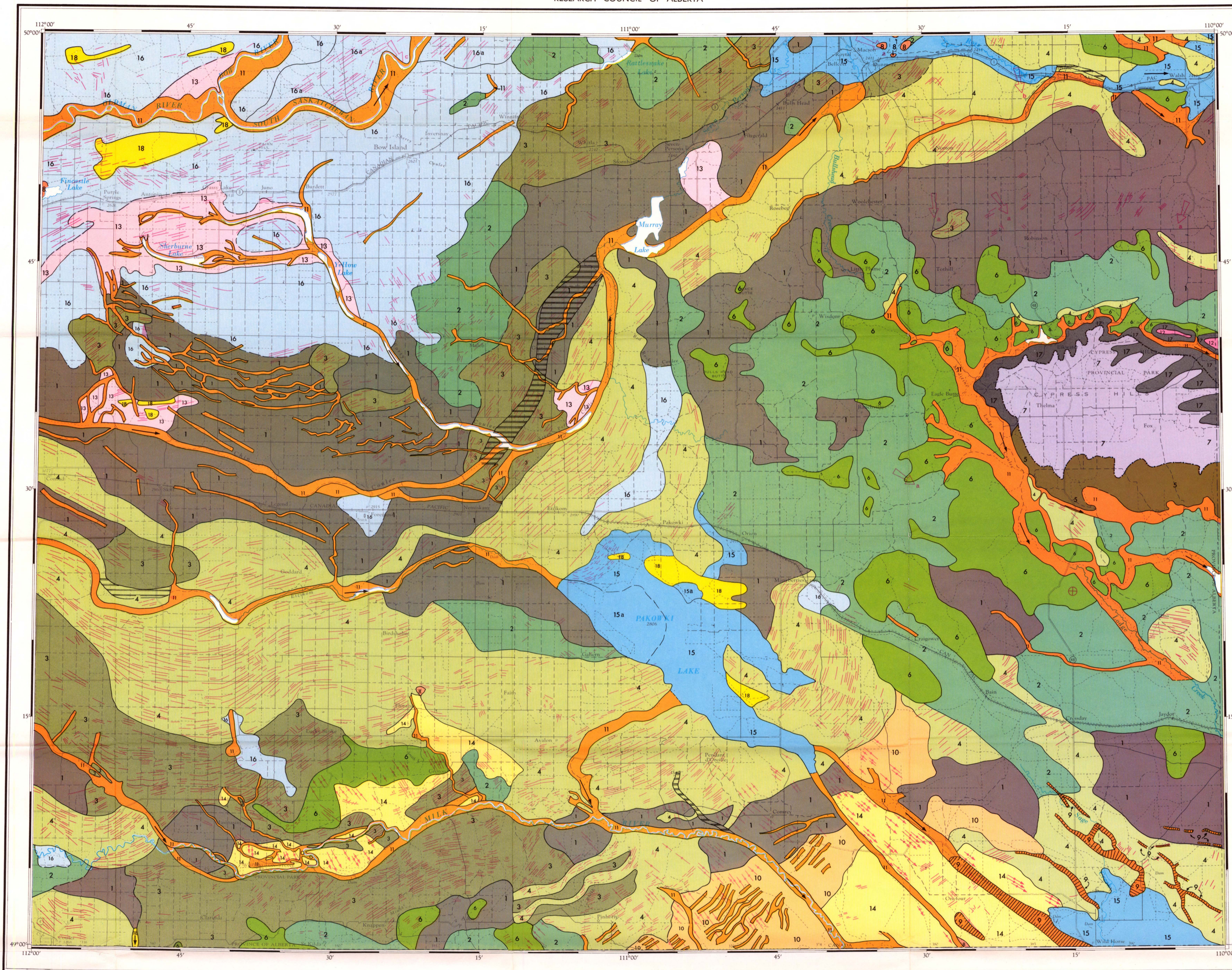
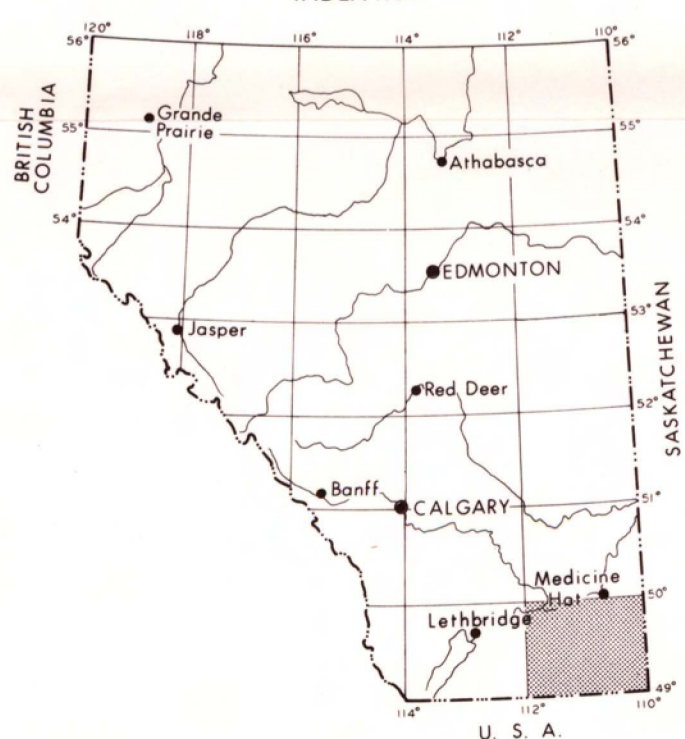


Geology by J. A. Westgate 1961-63.

Base map by Department of Energy, Mines and Resources, Ottawa.

Balance of map construction by the Technical Division, Department of Lands and Forests, Edmonton, Alberta.

INDEX MAP



To accompany Research Council of Alberta Bulletin 22

Published 1968

MAP 29

Surficial Geology

FOREMOST - CYPRESS HILLS

WEST OF FOURTH MERIDIAN ALBERTA

Scale 1:250,000

1 inch to 4 Miles Approximately

